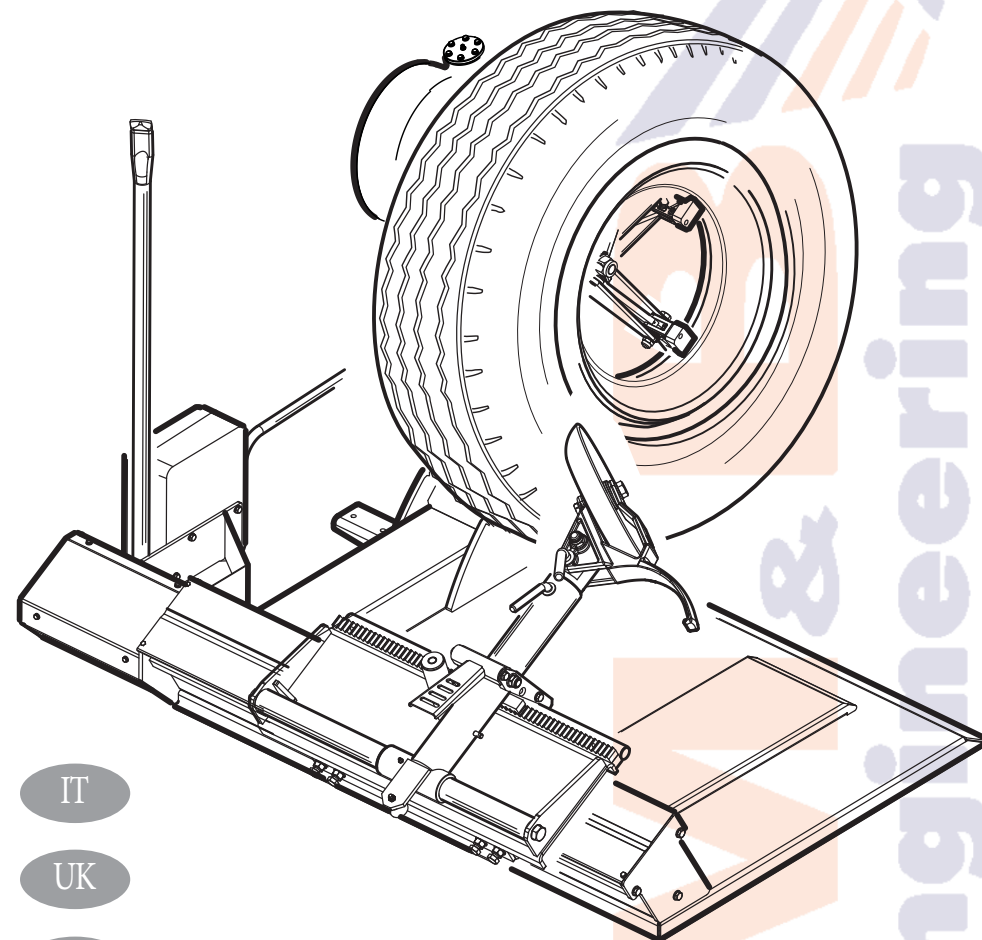


DIDO 30



SMONTAGOMME
TYRE CHANGING MACHINE - DÉMONTE-PNEUS
REIFENWECHSLER - DESMONTA-NEUMATICOS

COD. 500192 REV. 6

MANUALE D'ISTRUZIONE ORIGINALE
ORIGINAL INSTRUCTIONS MANUAL
MANUEL D'INSTRUCTIONS ORIGINAL
ORIGINALE ANLEITUNGSHINWEISE
MANUAL DE INSTRUCCIONES ORIGINAL

IT

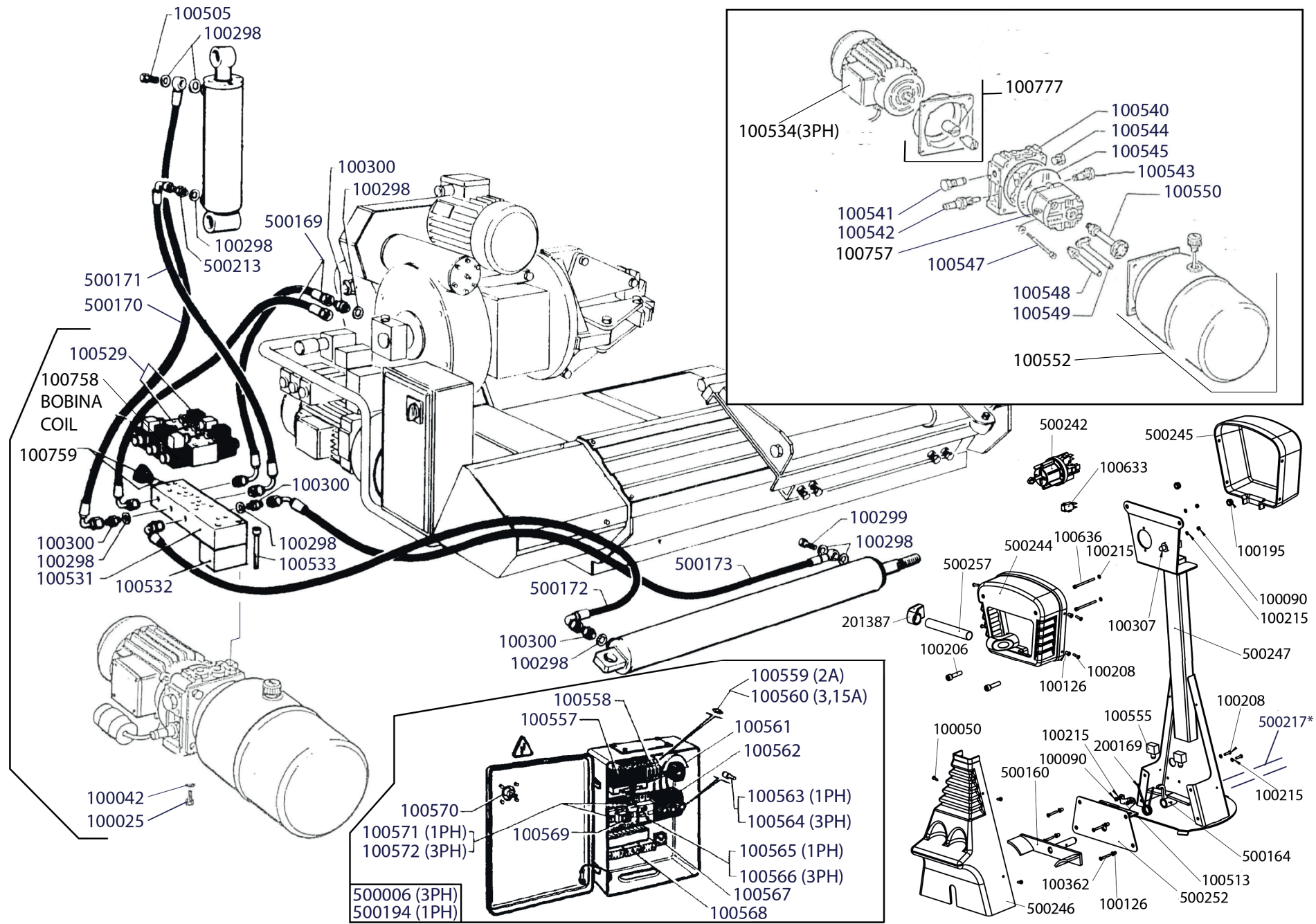
UK

FR

DE

ES

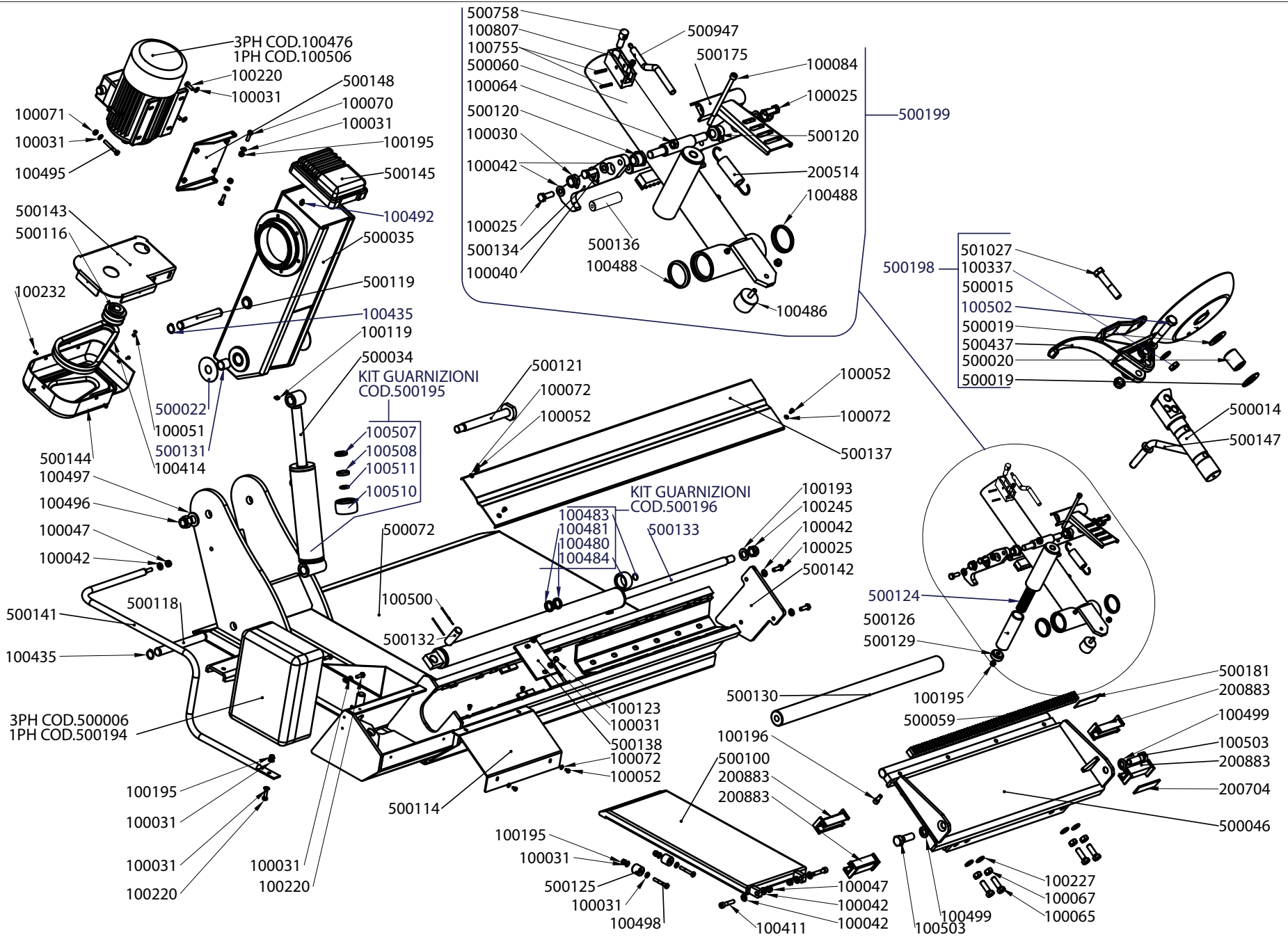




NEL MONTARE IL CAVO SEGUIRE SCRUPolosAMENTE LA NUMERAZIONE
 WHEN YOU INSTALL THE CABLE FOLLOW STRITLY THE NUMBERING

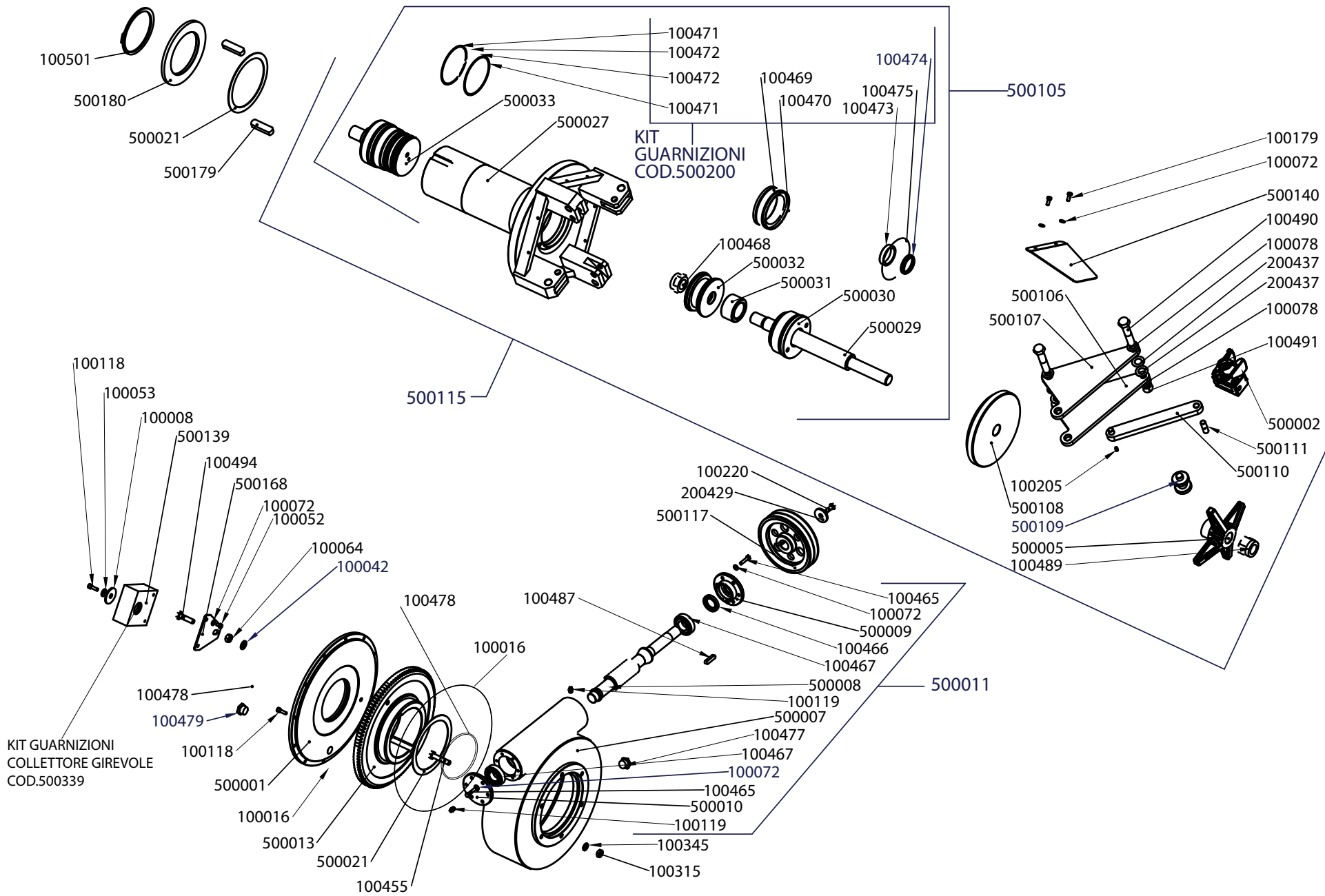
cod. 500216

REV. 2



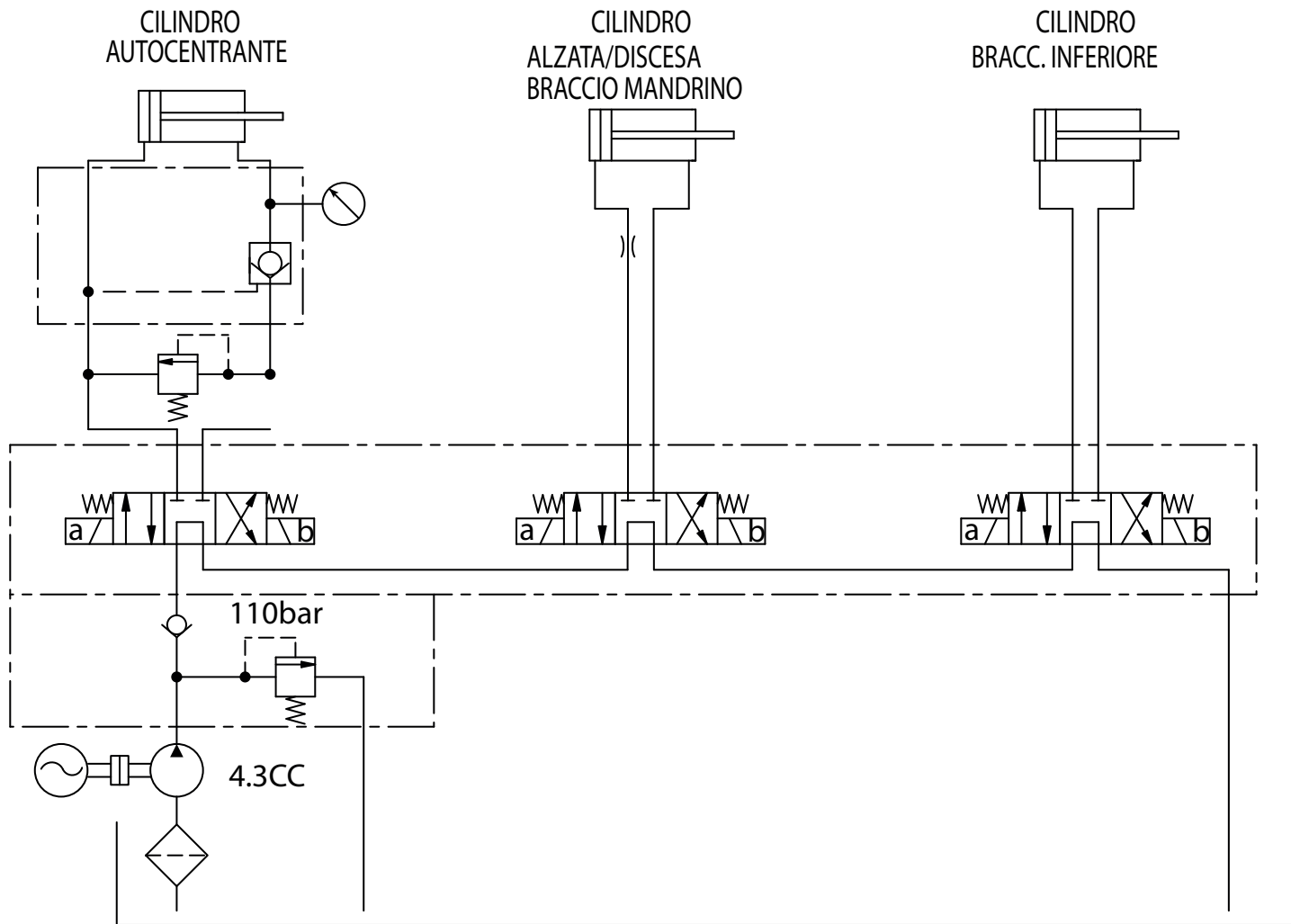
COD. 500197

REV. 2



COD. 500201

REV. 1



cod. 500193

REV. 0

SCHEMA ELETTRICO QUADRO

INGRESSO RETE
NETZ-ANSCHLUSS
NETWORK ENTRANCE

1.1 1.2

SCHALTТАFELPLAN

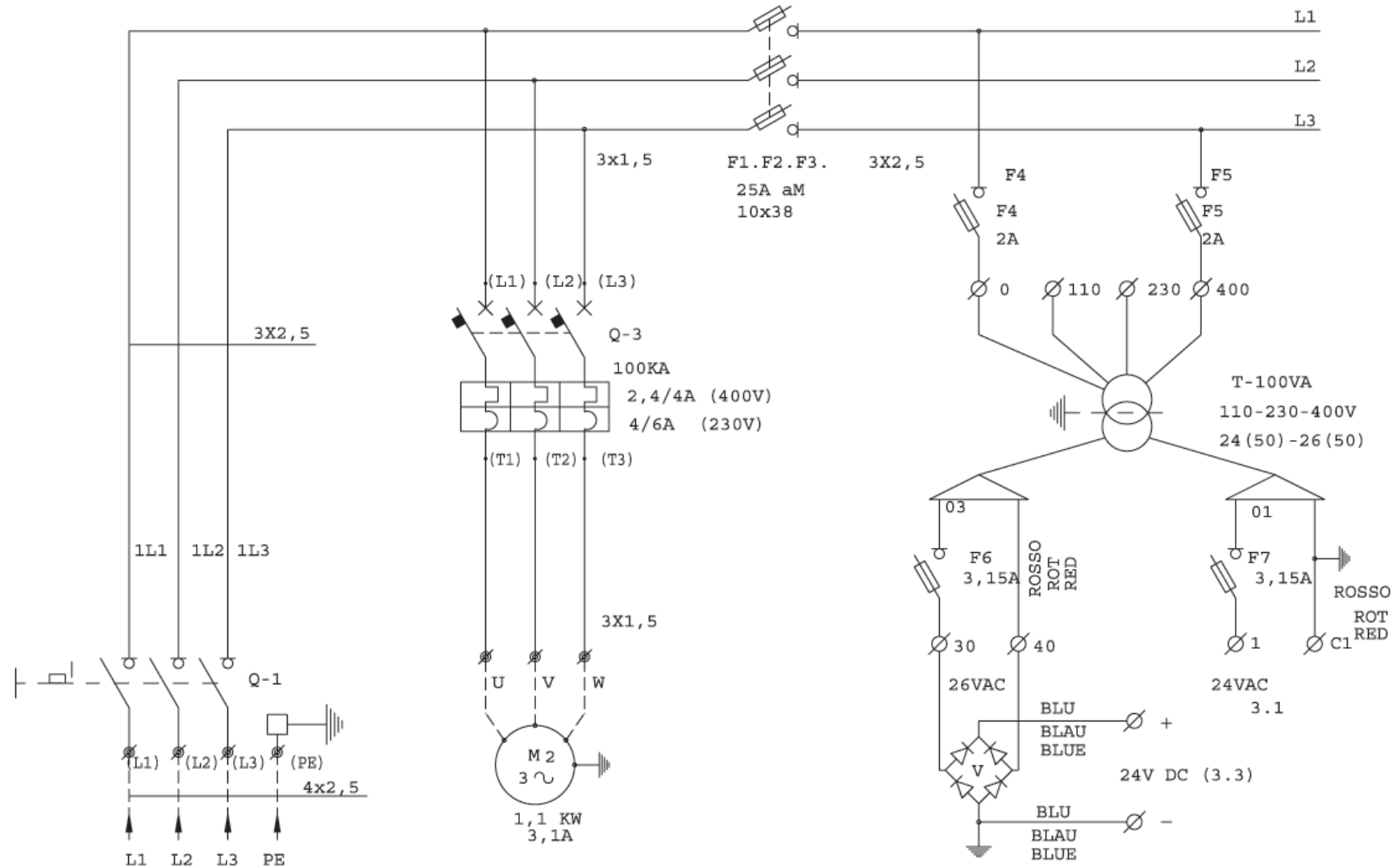
POMPA OLEODINAMICA
HYDRAULIK-PUMPE
OIL PUMP

1.3 1.4 1.5 1.6

ELECTRIC BOARD PLAN

TRASFORMATORE COMANDI
TRAFU-STEUERUNGEN
CONTROL'S TRANSFORMER

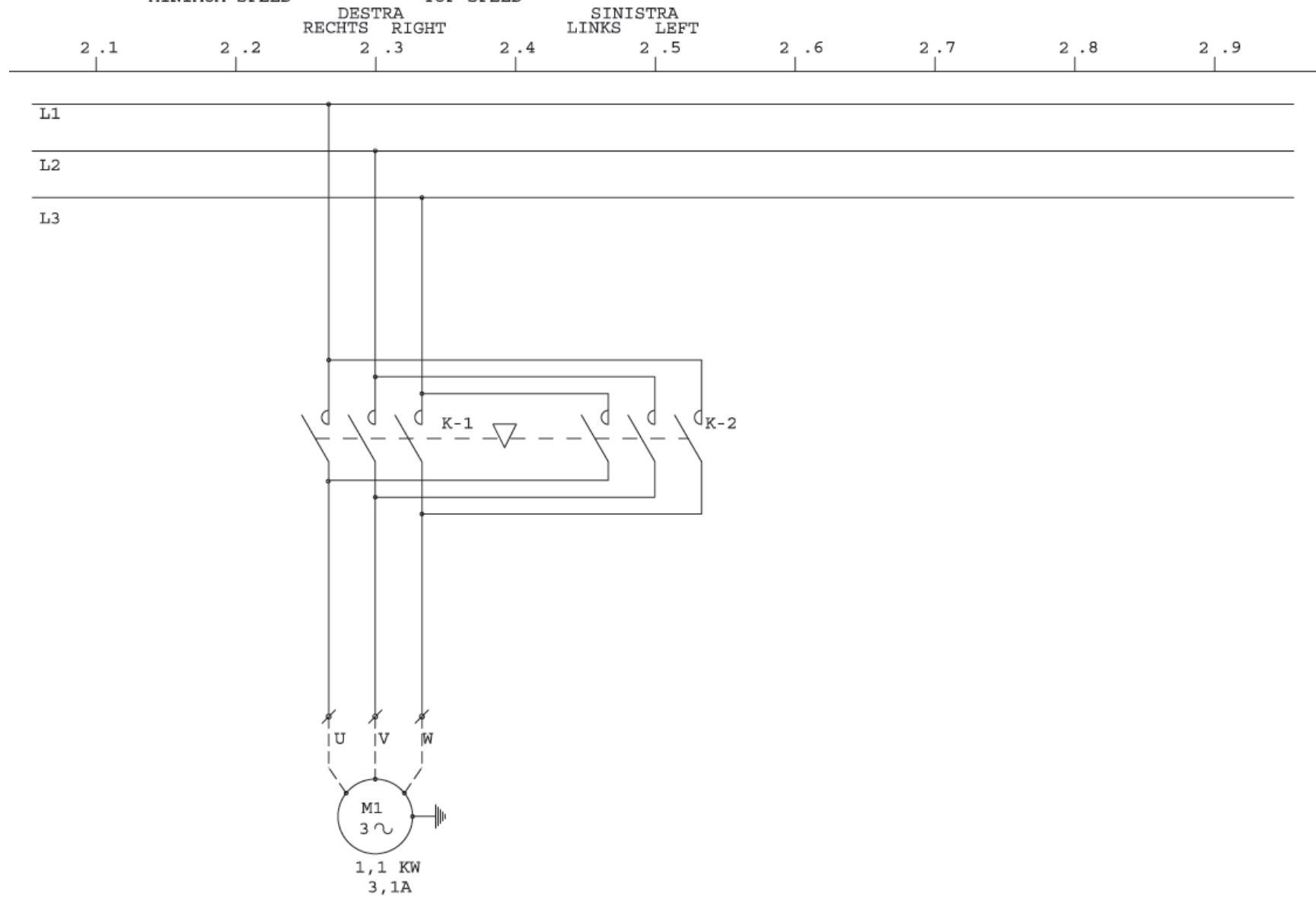
1.7 1.8 1.9



COD. 500218

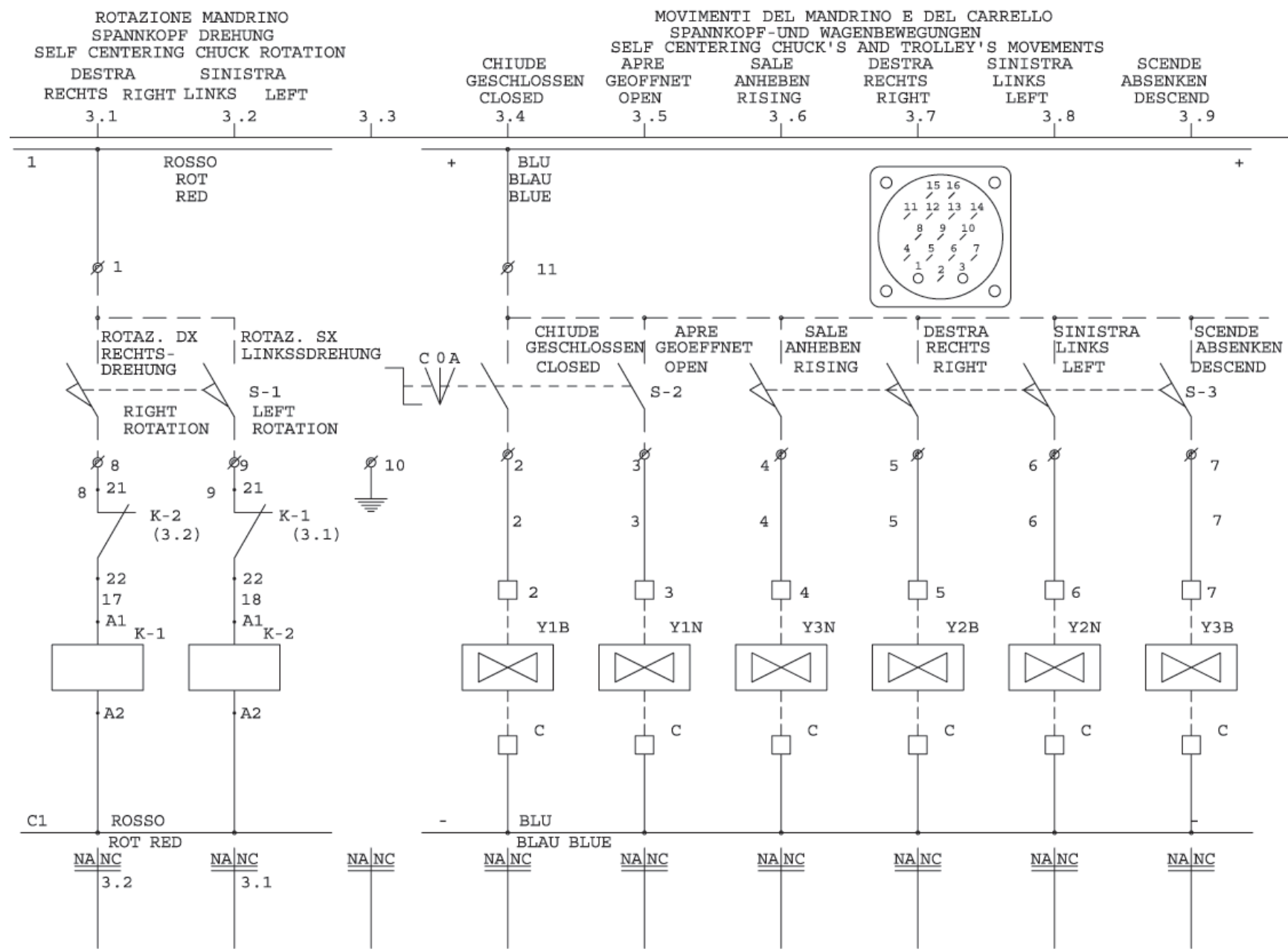
REV. 0

MOTORE MANDRINO SPANNKOPF-MOTOR SELF CENTRING CHUCK MOTOR
 VELOCITA' MINIMA VELOCITA' MASSIMA
 MINIMALGESCHWINDIGKEIT HOCHSTGESCHWINDIGKEIT
 MINIMUM SPEED TOP SPEED



cod. 500219

REV. 0



COD. 500220

REV. 0

ROTAZIONE MANDRINO
 SPANNKOPF DREHUNG
 SELF CENTERING CHUCK ROTATION
 DESTRA SINISTRA
 RECHTS LINKS
 RIGHT LEFT
 4 .1 4 .2

4 .3

CHIUDE
 GESCHLOSSEN
 CLOSED
 4.4

APRE
 GEOEFFNET
 OPEN
 4 .5

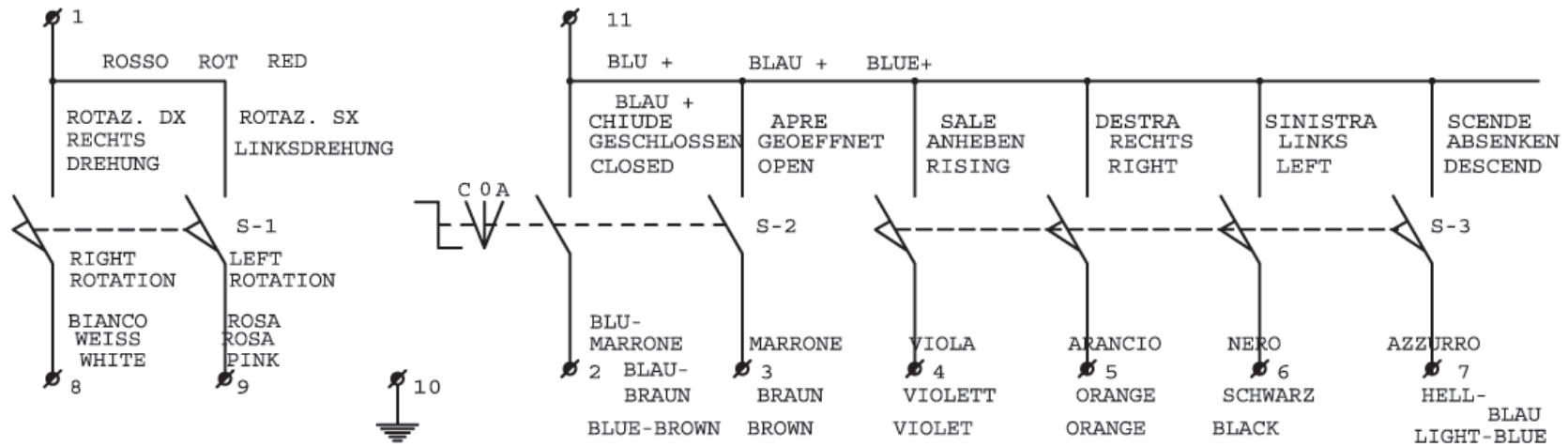
SALE
 ANHEBEN
 RISING
 4 .6

DESTRA
 RECHTS
 RIGHT
 4.7

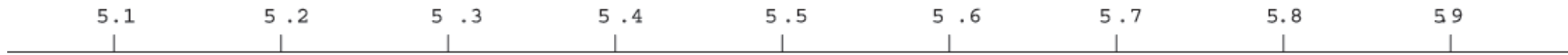
SINISTRA
 LINKS
 LEFT
 4.8

SCENDE
 ABSENKEN
 DESCEND
 4.9

SCHEMA ELETTRICO PEDALIERA
 PEDALSCHALTPLAN
 PEDAL'S ELECTRIC PLAN



MORSETTIERA QUADRO ELETTRICO
 KLEMMLEISTE SCHALTPLAN
 ELECTRIC TERMINAL BOARD



C	C	C	C	C	C	2	3	4	5	6	7
COMUNE ELETTROVALVOLE GEMEINSAME ANSCHLUSSE ELEKTROVENTILE ELECTROVALVES COMMON						Y1B	Y1N	Y3N	Y2B	Y2N	Y3B

NA/NC

NA/NC

NA/NC

NA/NC

NA/NC

NA/NC

NA/NC

NA/NC

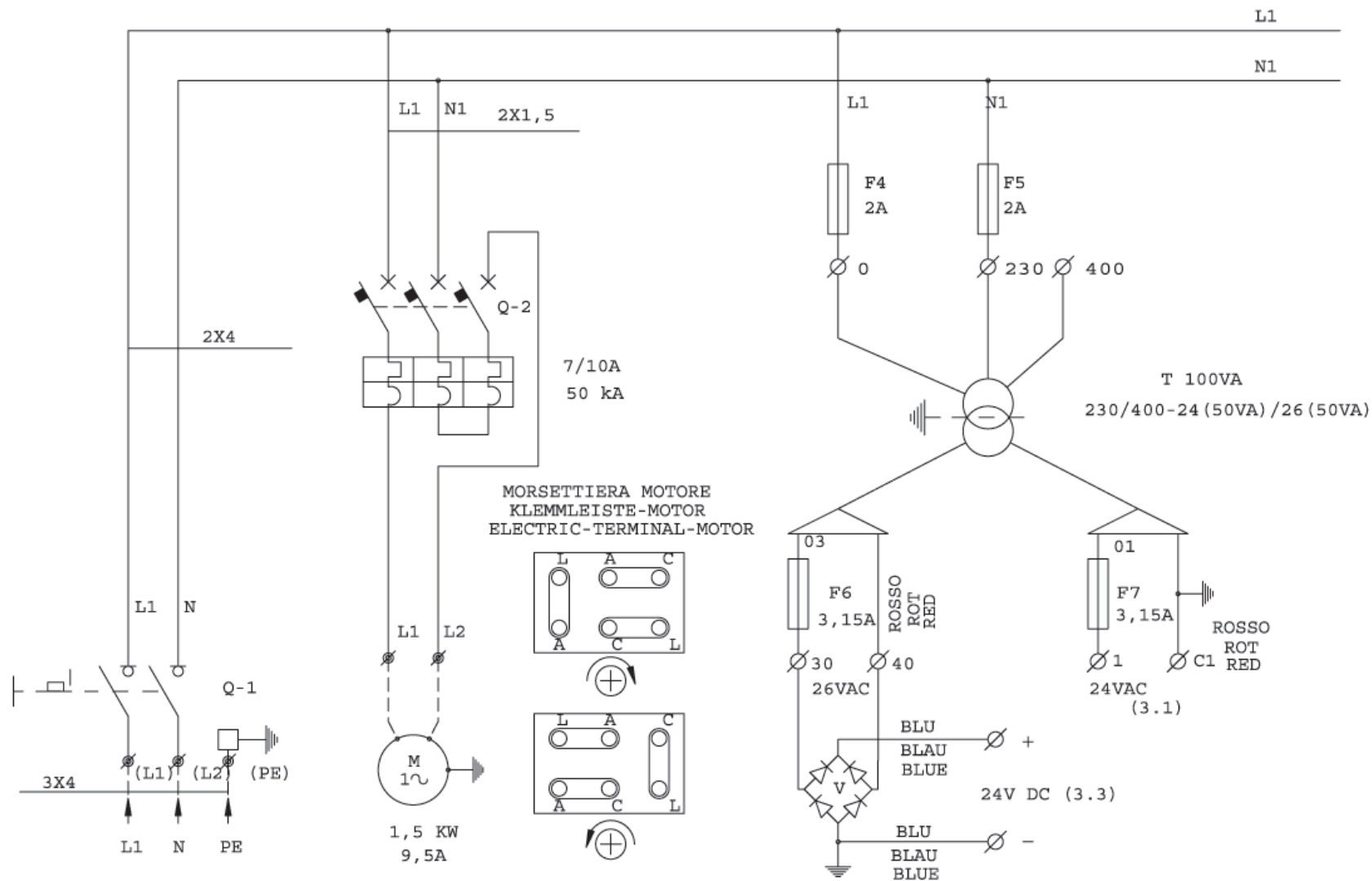
NA/NC

SCHEMA ELETTTRICO QUADRO
 INGRESSO RETE
 NETZ-ANSCHLUSS
 NETWORK ENTRANCE

SCHALT'TAFELPLAN
 POMPA OLEODINAMICA
 HYDRAULIK-PUMPE
 OIL-PUMP

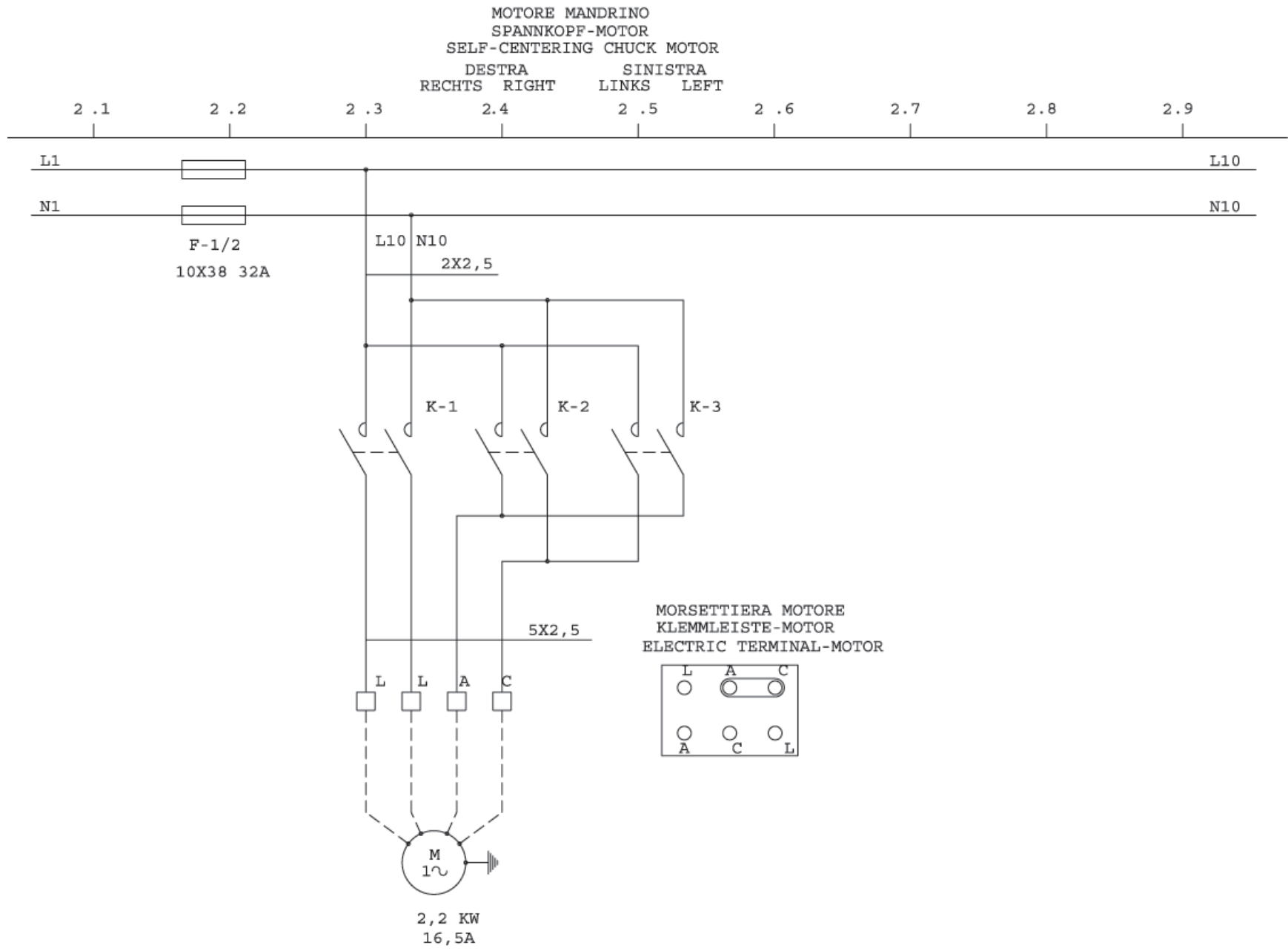
ELECTRIC BOARD PLAN (MONOFASE) (SINGLE-PHASE)
 TRASFORMATORE COMANDI
 TRAF0-STEUERUNGEN
 CONTROLS' TRANSFORMER

1.1 1.2 1.3 1.4 1.5 1.6 1.7 1.8 1.9



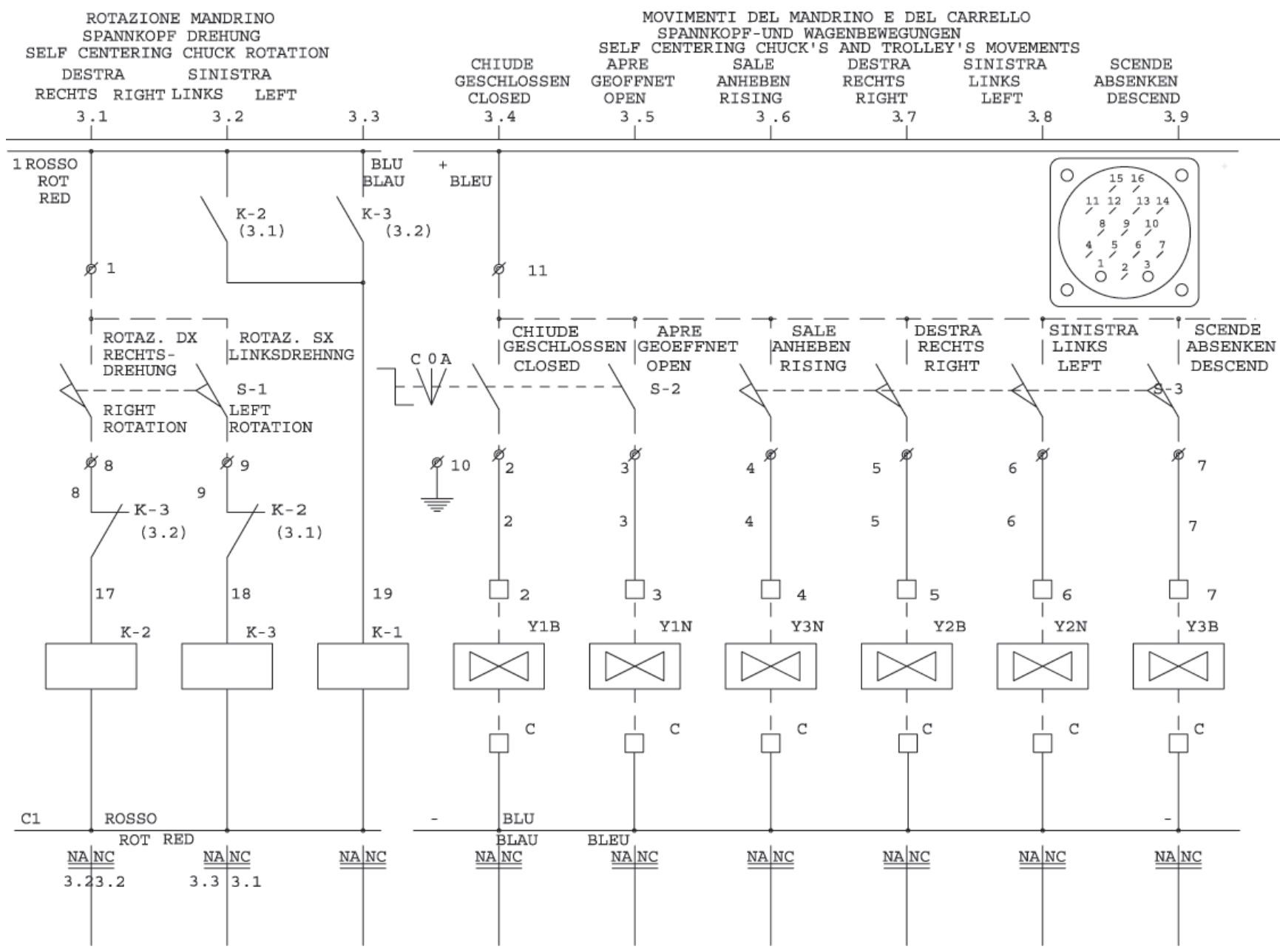
COD. 500223

REV. 0



cod. 500224

REV. 0



COD. 500225

REV. 0

ROTAZIONE MANDRINO
 SPANNKOPF DREHUNG
 SELF CENTERING CHUCK ROTATION

DESTRA SINISTRA
 RECHTS RIGHT LINKS LEFT

4 .1

4 .2

4 .3

CHIUDE
 GESCHLOSSEN
 CLOSED

4.4

MOVIMENTI DEL MANDRINO E DEL CARRELLO
 SPANNKOPF-UND WAGENBEWEGUNGEN
 SELF CENTERING CHUCK'S AND TROLLEY'S MOVEMENTS

APRE
 GEOFFNET
 OPEN

4 .5

SALE
 ANHEBEN
 RISING

4 .6

DESTRA
 RECHTS
 RIGHT

4.7

SINISTRA
 LINKS
 LEFT

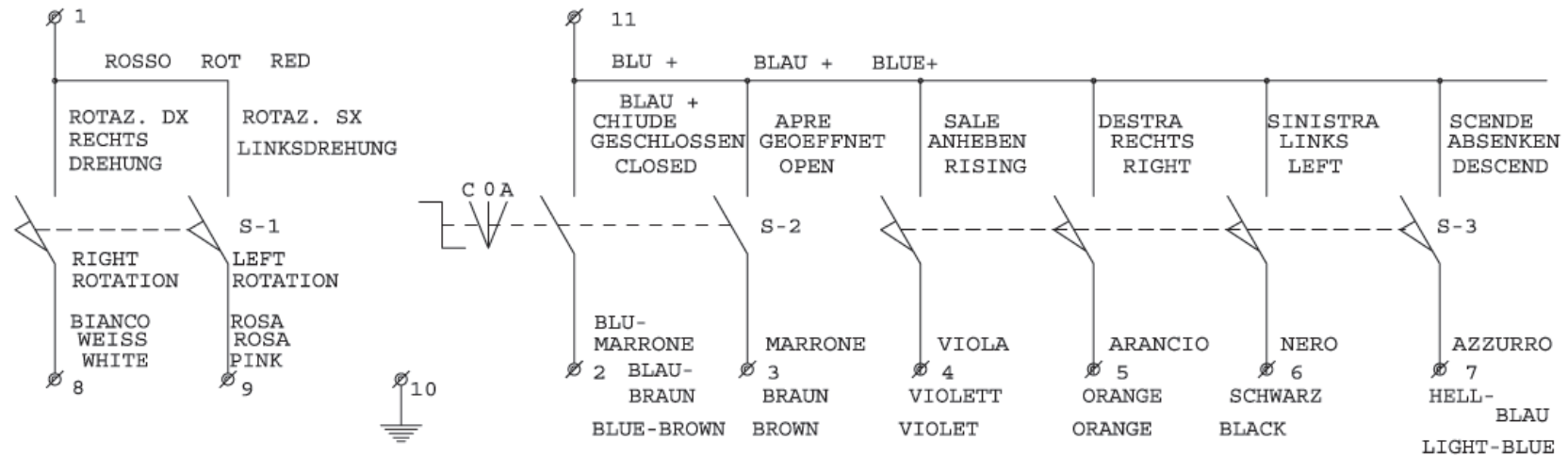
4.8

SCENDE
 ABSSENKEN
 DESCEND

4.9

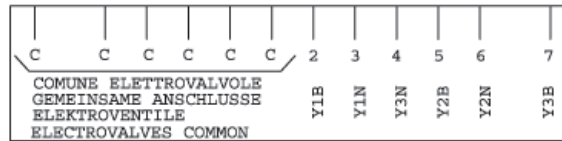
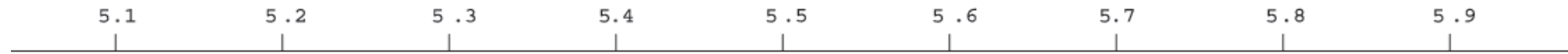
SCHEMA ELETRICO PEDALIERA
 PEDALSCHALTPLAN
 PEDAL'S ELECTRIC PLAN

(MONOFASE) (SINGLE-PHASE)



MORSETTIERA QUADRO ELETTRICO
KLEMMLEISTE SCHALTPLAN
ELECTRIC TERMINAL BOARD

(MONOFASE) (SINGLE-PHASE)



NA/NC

NA/NC

NA/NC

NA/NC

NA/NC

NA/NC

NA/NC

NA/NC

NA/NC

cod. 500227

REV. 0