

TC600

e versioni speciali

and special versions - et versions spéciales
und Sonderausführungen - y versiones especiales

IT • PG • L-L System

SMONTAGOMME

TYRE CHANGING MACHINE - DÉMONTE-PNEUS

REIFENWECHSLER - DESMONTA-NEUMATICOS

COD. 202009 REV. 0

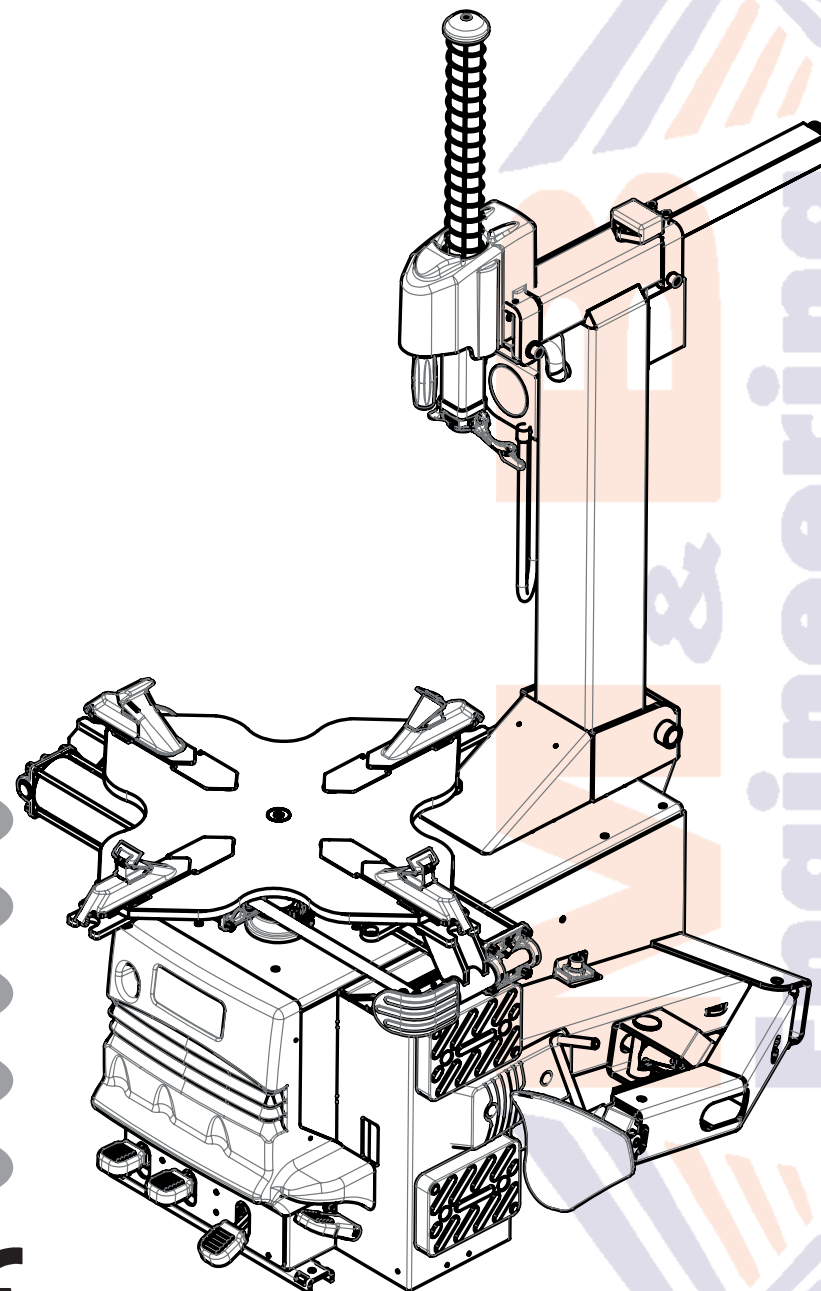
MANUALE D'ISTRUZIONE ORIGINALE

ORIGINAL INSTRUCTIONS MANUAL

MANUEL D'INSTRUCTIONS ORIGINAL

ORIGINALE ANLEITUNGSHINWEISE

MANUAL DE INSTRUCCIONES ORIGINAL



I

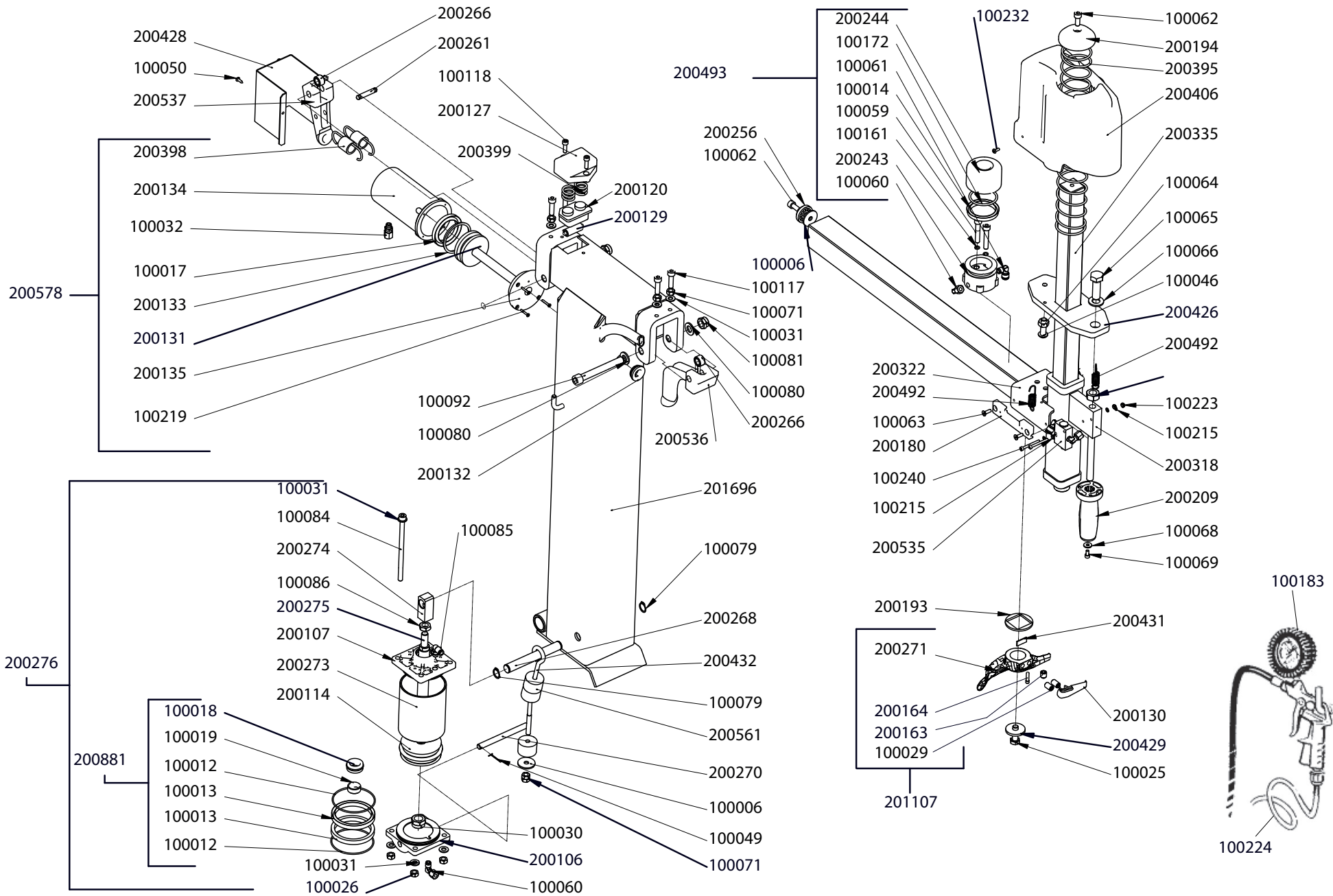
UK

F

D

E

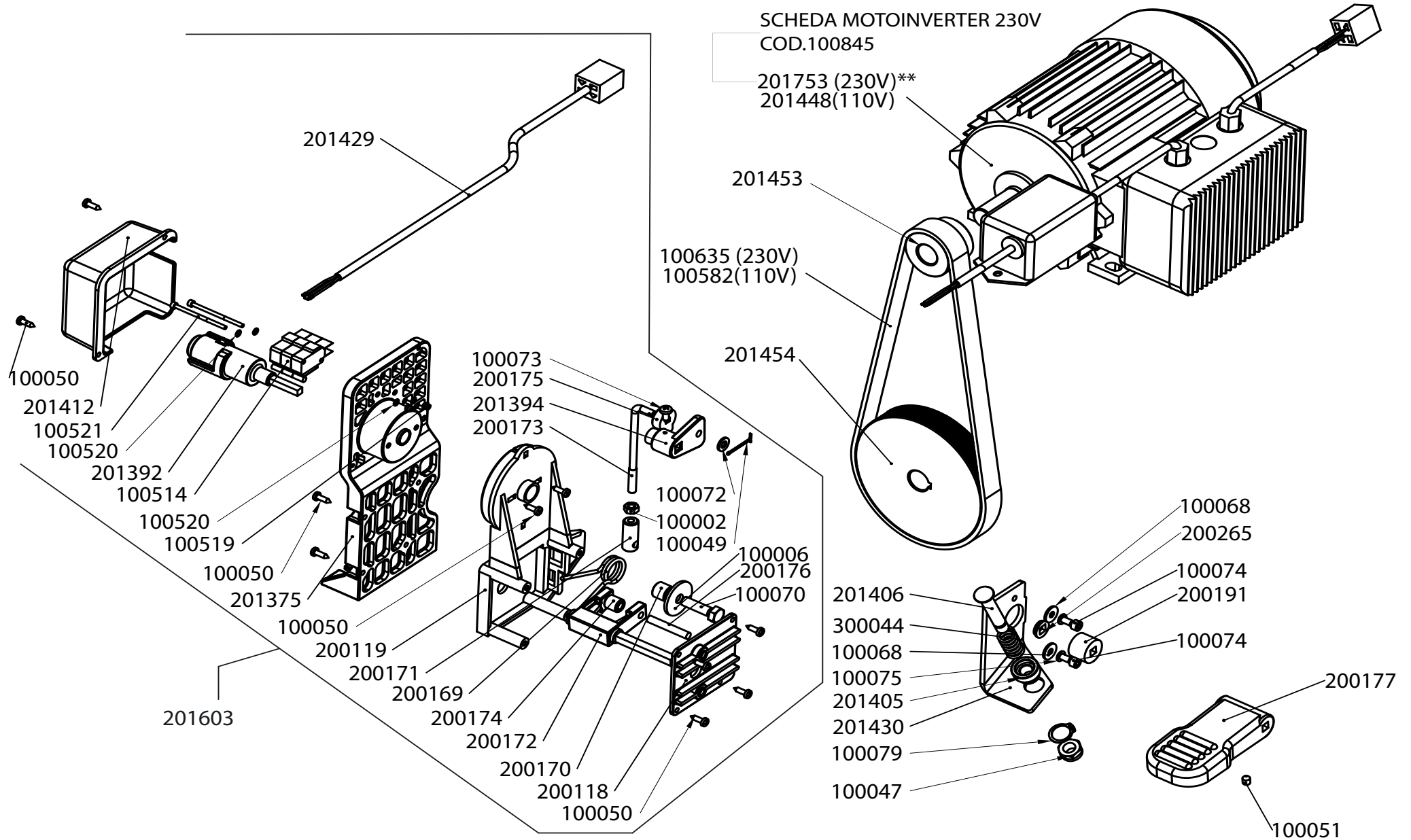




COD. 200888

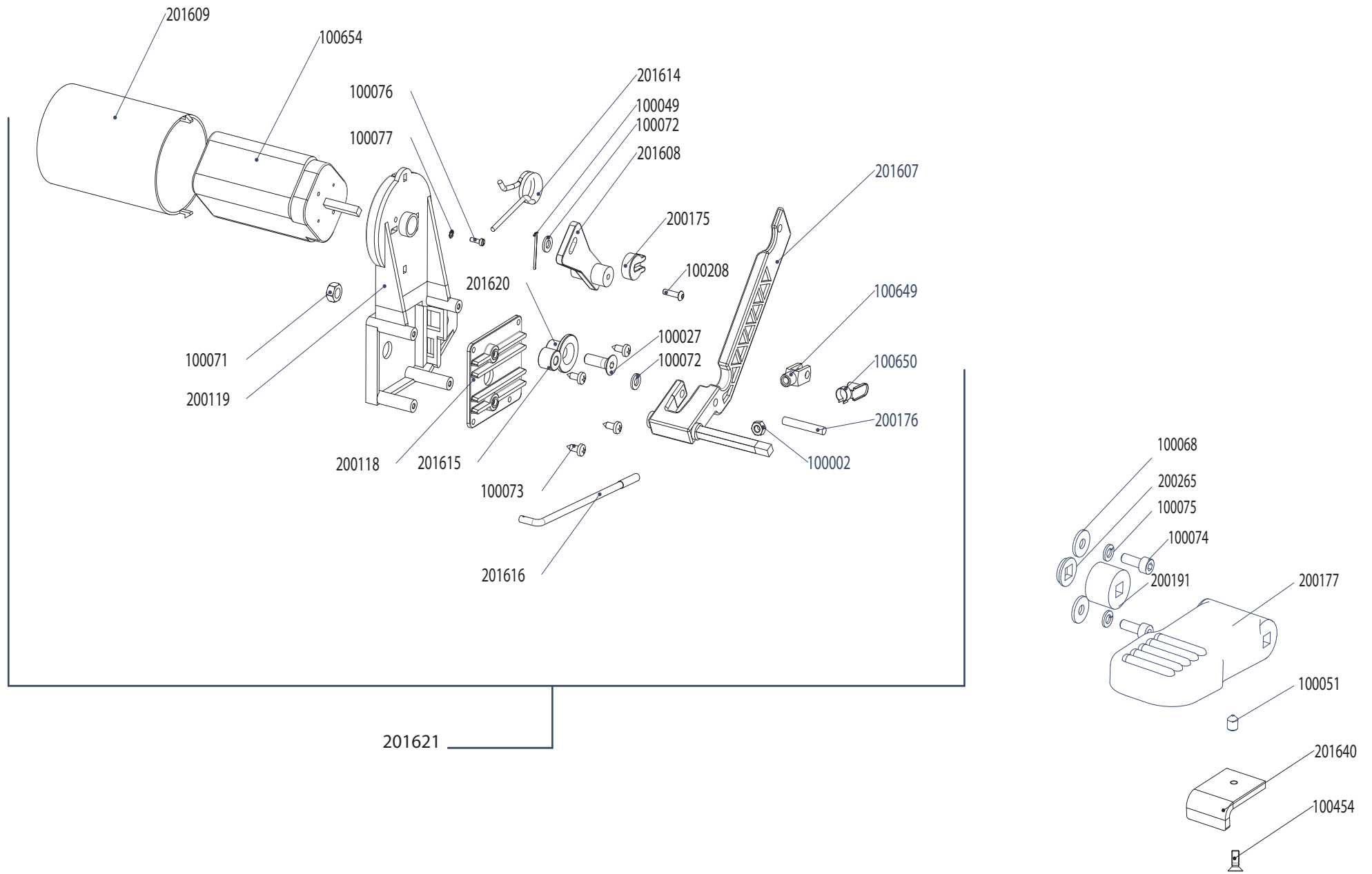
REV. 1

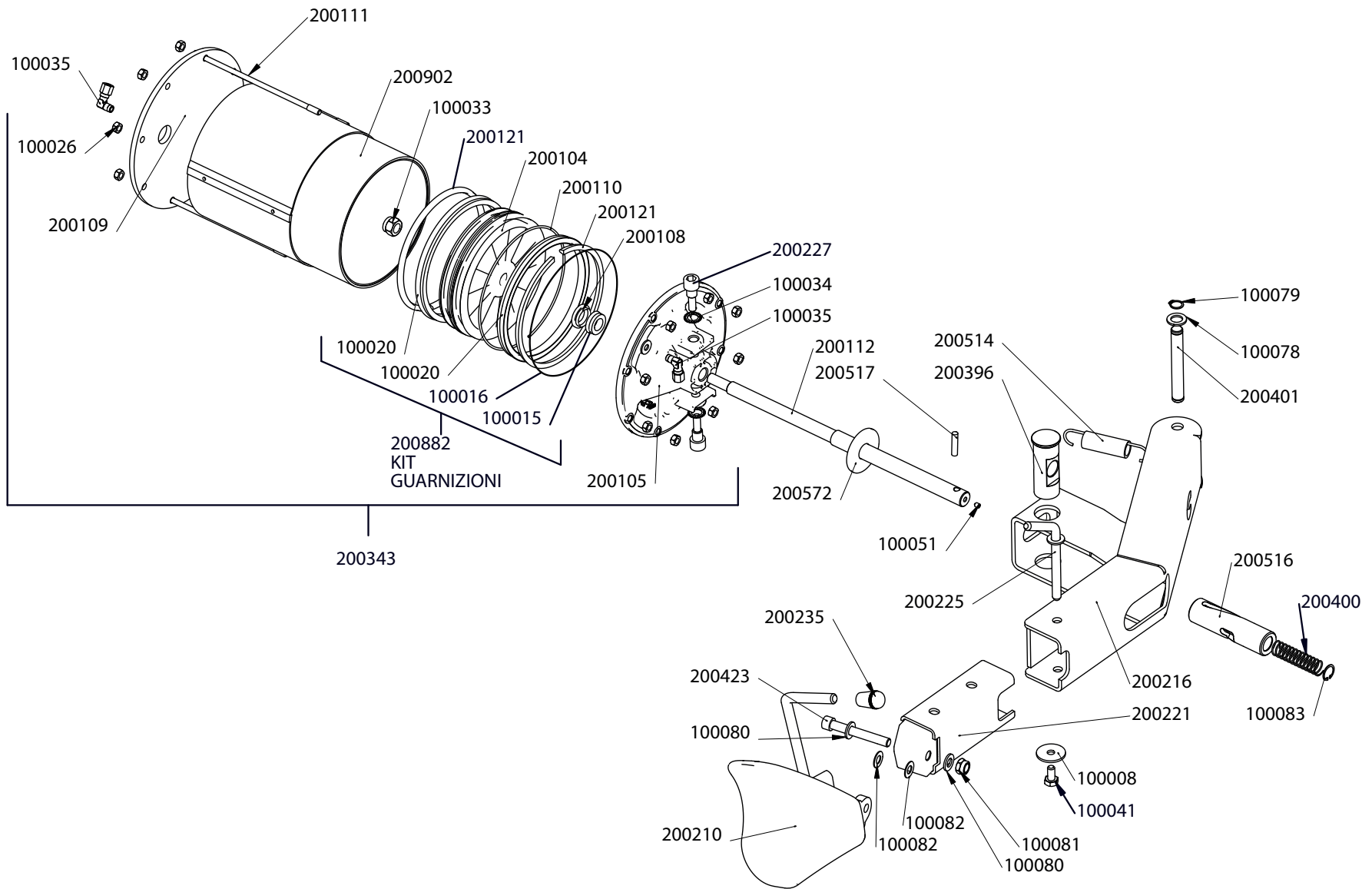
** MONTATO DAL S/N 3581005541114



cod. 201465

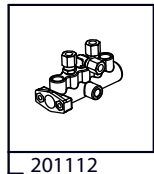
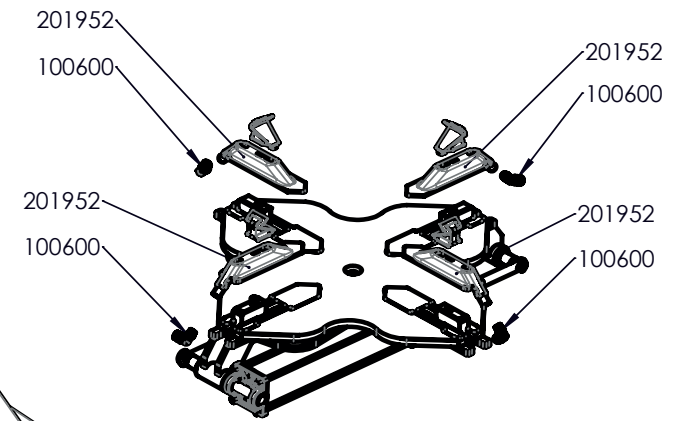
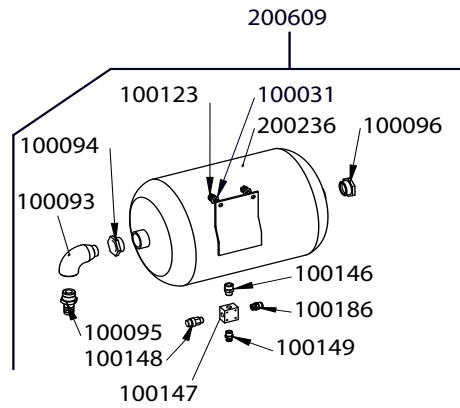
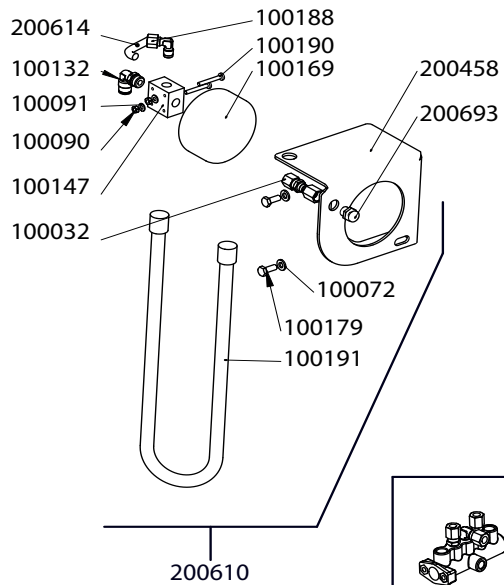
REV. 3



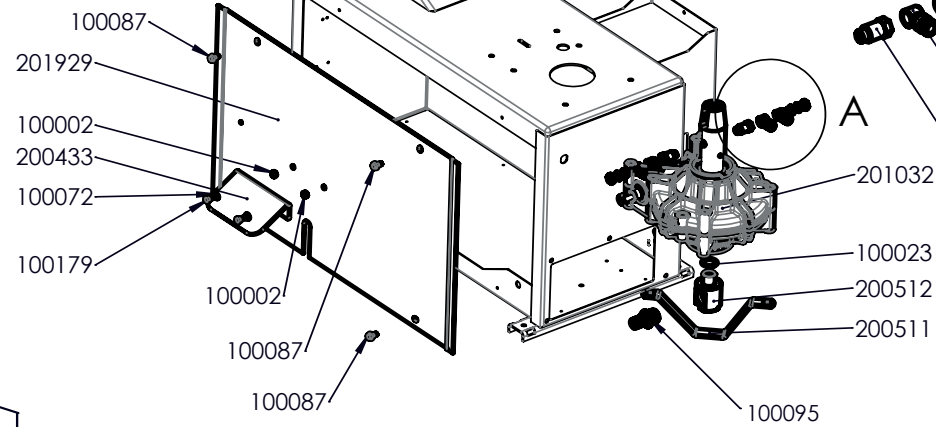


COD. 200891

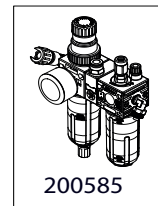
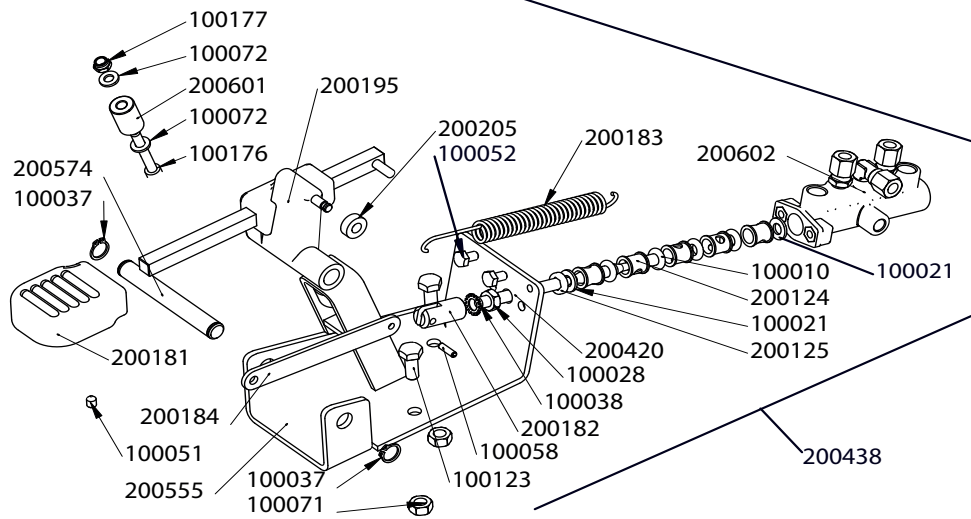
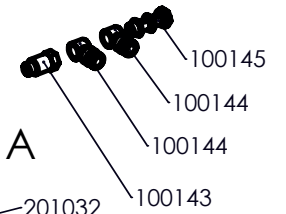
REV. 0



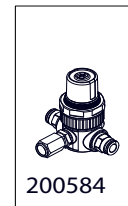
201112
RUBINETTO
PER VERSIONI IT



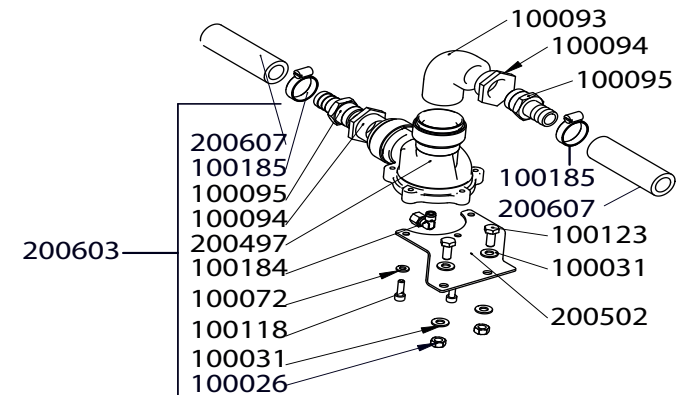
DETTAGLIO A

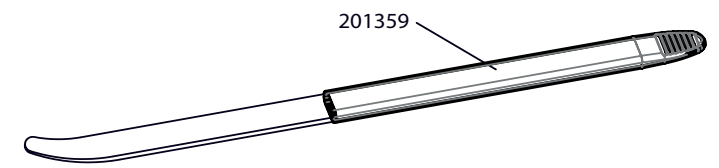
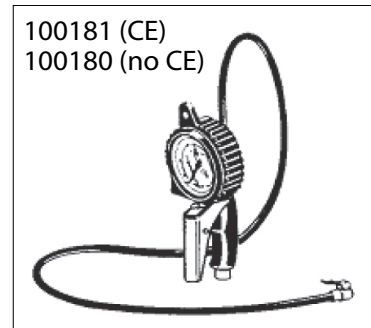
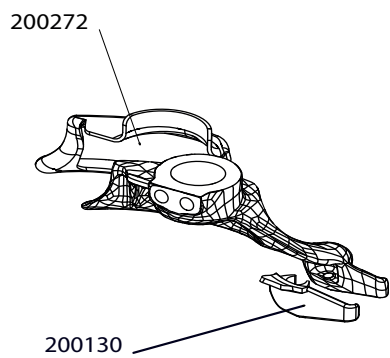
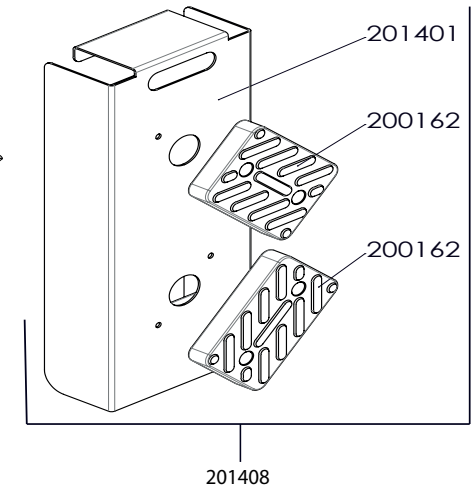
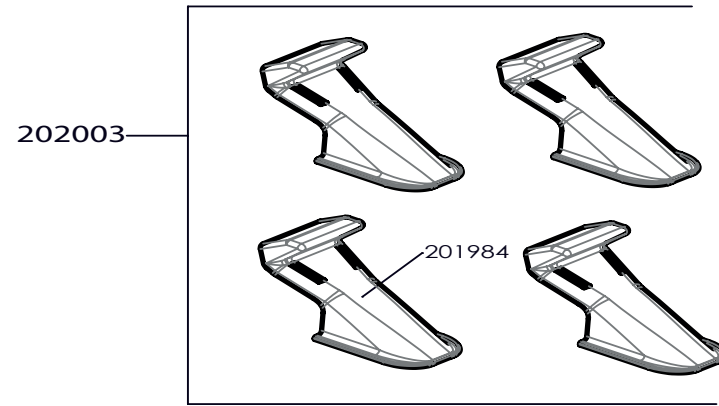
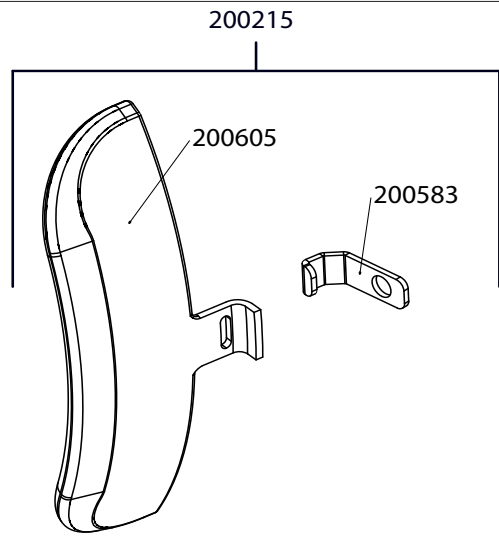


200585



200584



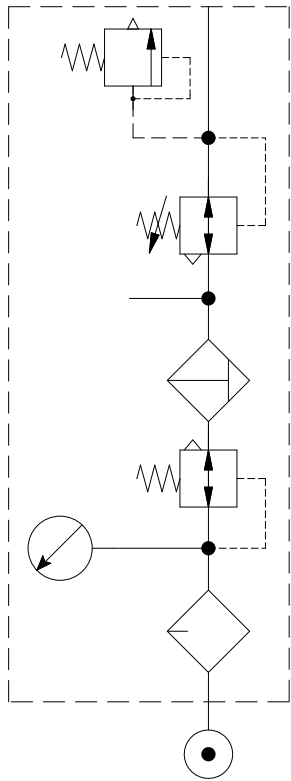


OPTIONAL

cod. 202004

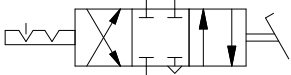
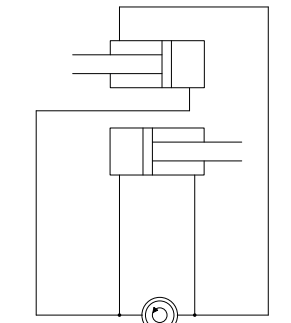
REV. 0

(A RICHIESTA)
 MONTAGGIO GRUPPO
 A RICHIESTA FR+L+
 VALV.TAR 3,5 bar

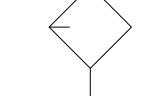
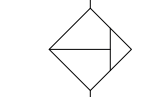
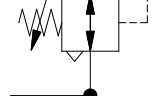
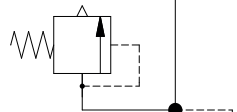


PRESSIONE DA 1.5 A 12 bar

AUTOCENTRANTE

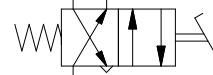
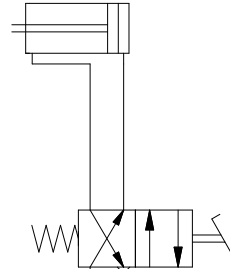


3.5 bar

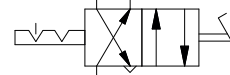
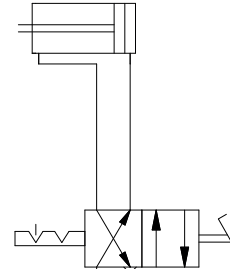


PRESSIONE ESERCIZIO
 DA 1.5 A 12 bar

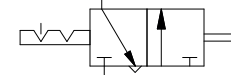
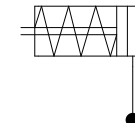
STALLONATORE



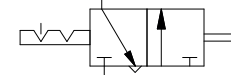
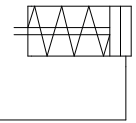
RIBALTAMENTO PALO



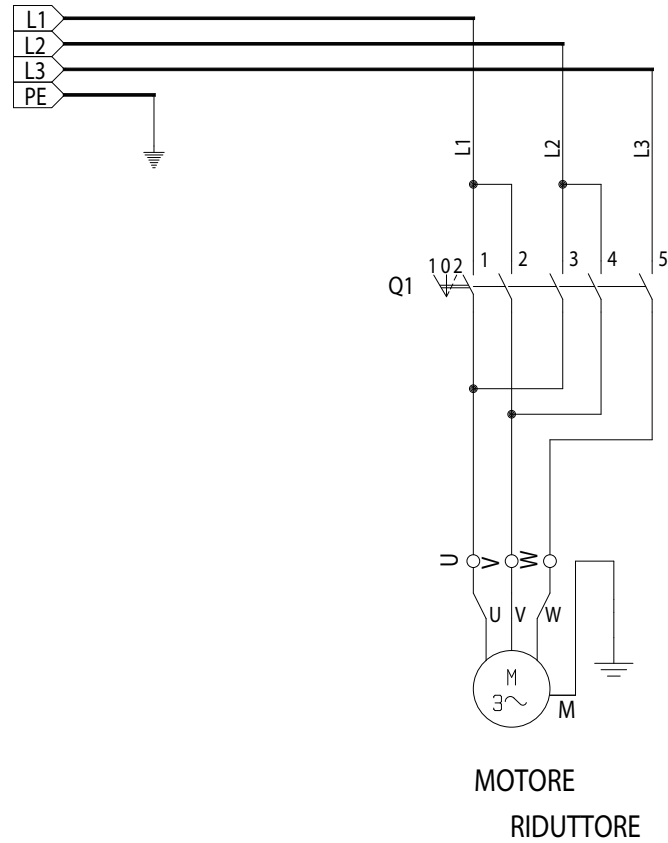
VERTICALE



BLOCCAGGIO



SMONTAGOMME TRIFASE 400Vac



Q1

ELEM.	I		II		III	
CONT.	1	2	3	4	5	6
POSIZ.	1	X		X	X	
	0					
	2		X	X	X	

1 = ROTAZIONE ORARIA

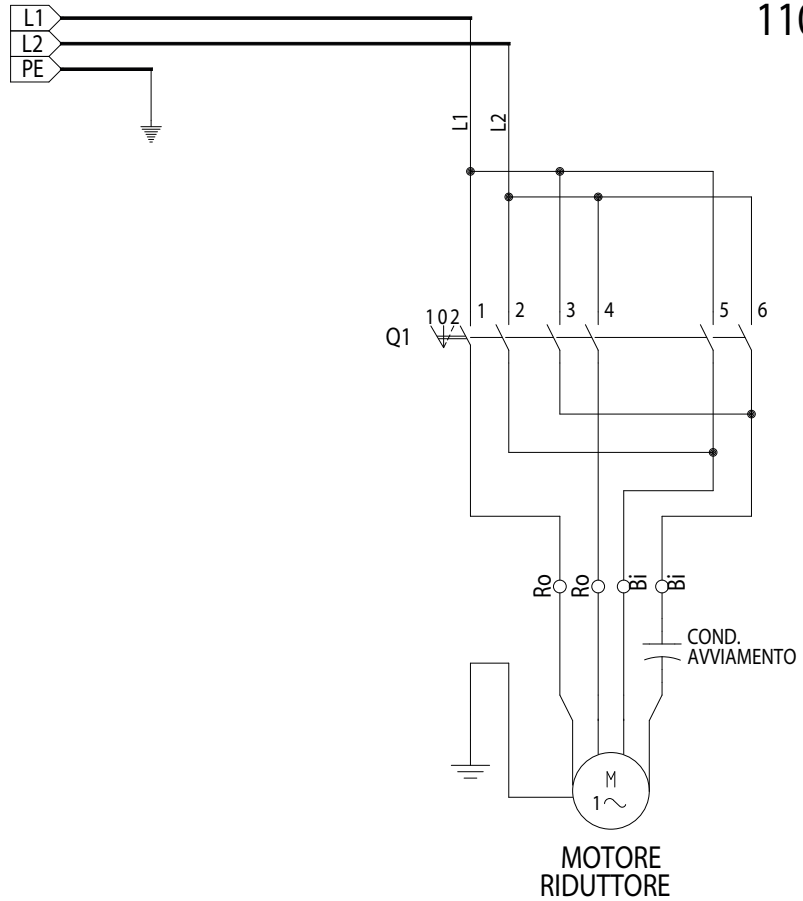
2 = ROTAZIONE ANTIORARIA

SMONTAGOMME MONOFASE 230 Vac

230V 60Hz

230V 50Hz

110V 60Hz



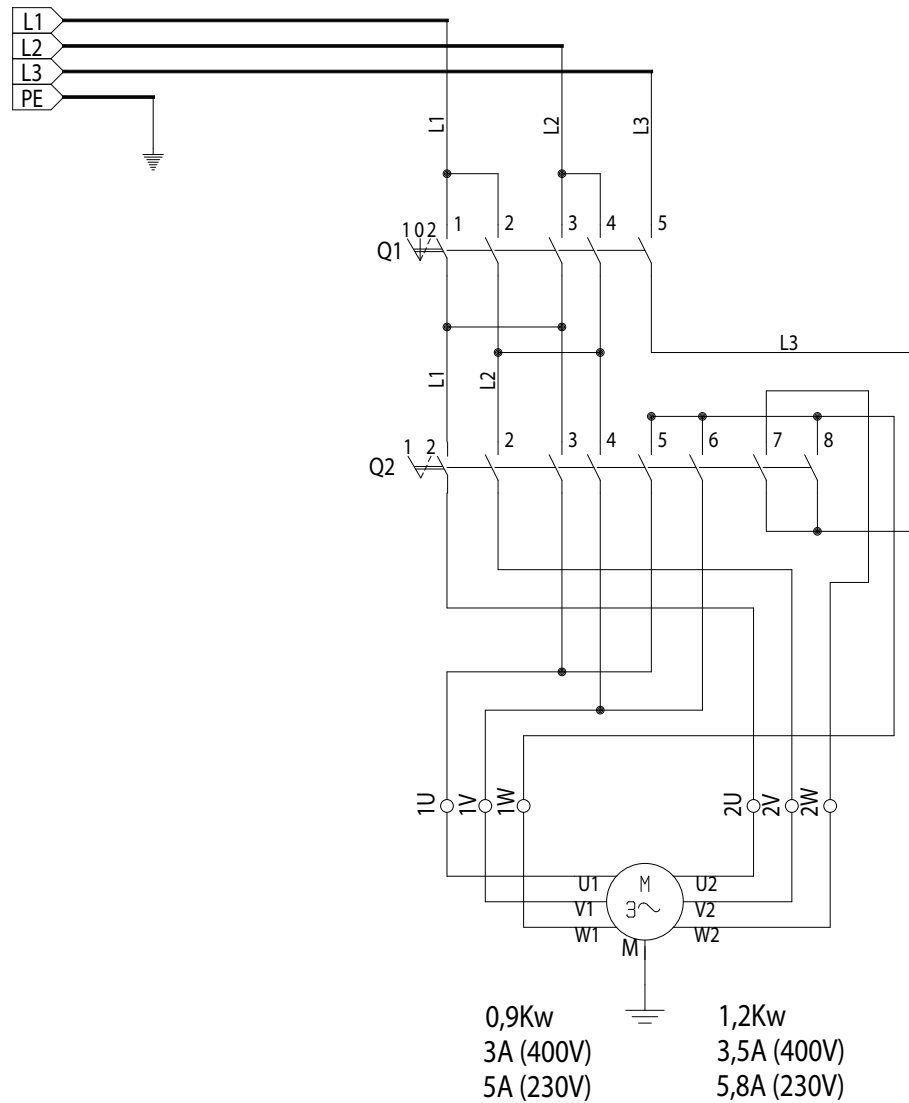
Q1

ELEM.	I		II		III	
CONT.	1	2	3	4	5	6
POSIZ.	1	X	X	X		
	0					
	2	X			X	X

1 = ROTAZIONE ORARIA

2 = ROTAZIONE ANTIORARIA

SMONTAGOMME TRIFASE 400Vac DOPPIA VELOCIT;



Q1

ELEM.	I		II		III	
CONT.	1	2	3	4	5	6
POSIZ.	1	X			X	X
	0					
	2		X	X		X

Q2

ELEM.	I		II		III		IV	
CONT.	1	2	3	4	5	6	7	8
POSIZ.	1			X	X			X
	2	X	X			X	X	X