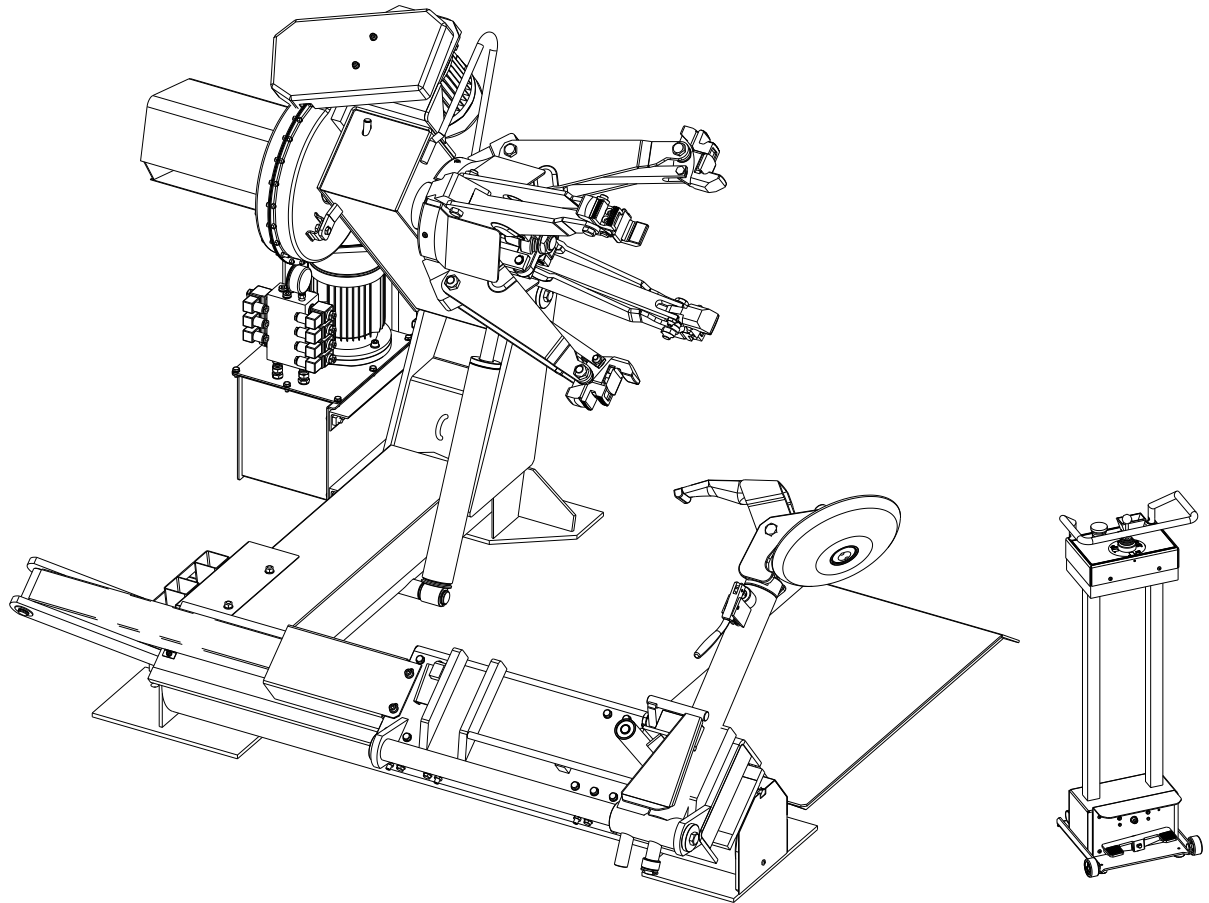
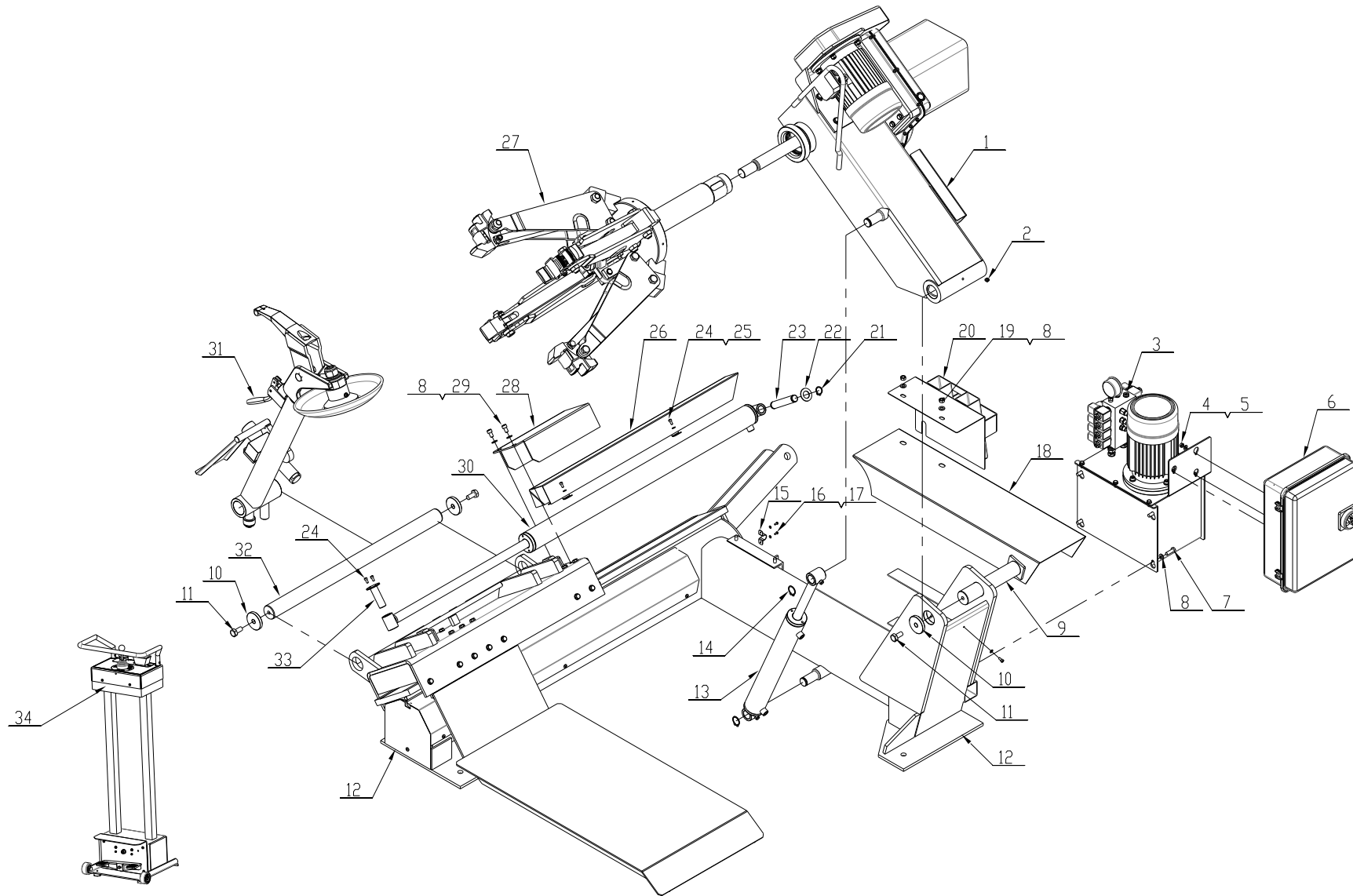


ED. 12/2013

PART CATALOGUE
STD-303
TIRE CHANGER



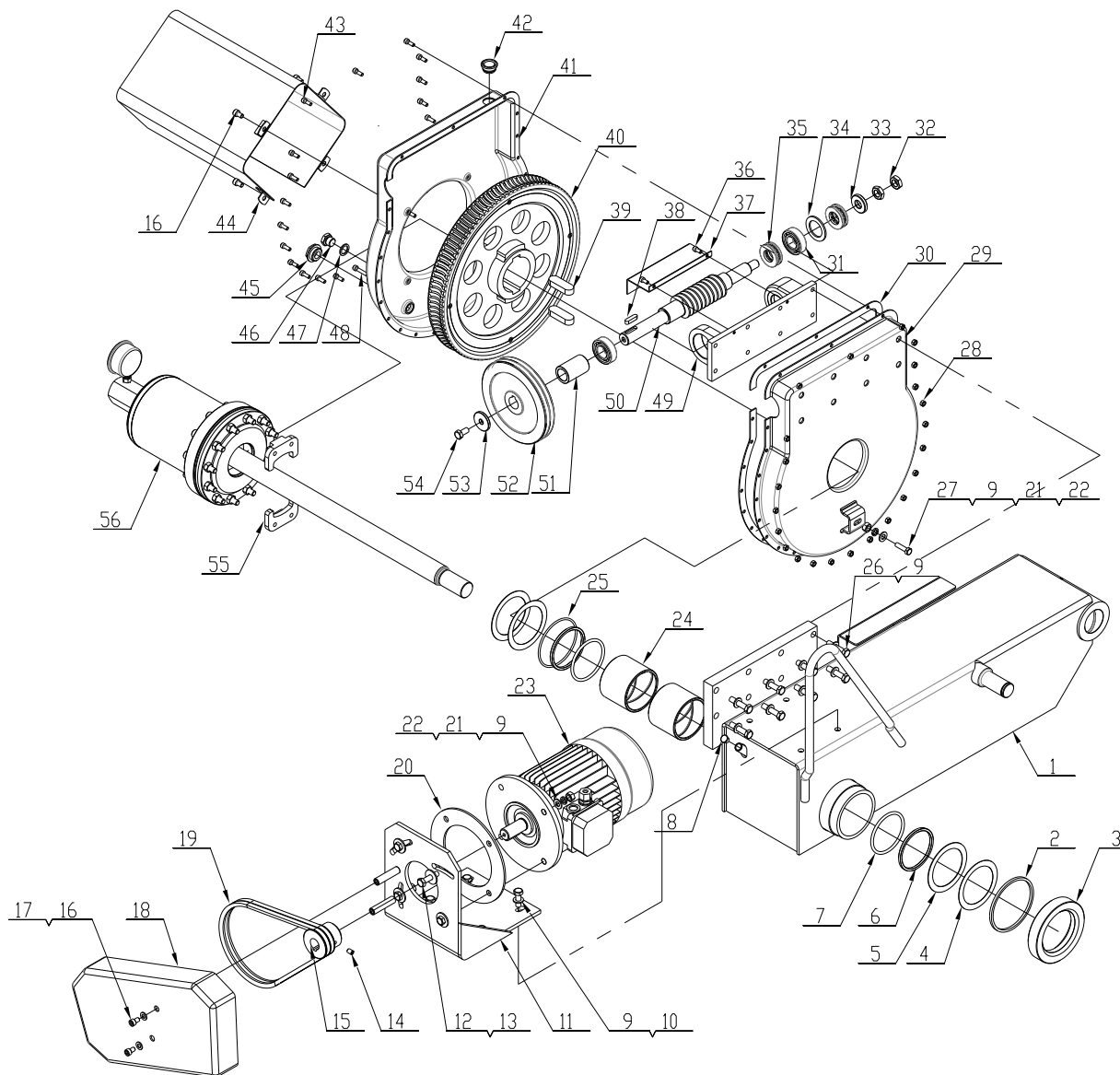


| | | |
|-------|------------------|-----------|
| TAV.0 | GENERAL ASSEMBLY | ED. 12/13 |
|-------|------------------|-----------|

| ITEM | PART NO. | DESCRIPTION | QTY | REMARK |
|------|--------------|----------------------------|-----|--------|
| 1 | YC8-2000000A | Chuck arm | 1 | |
| 2 | 0215021 | Greaser M8X1 - GB1152 | 1 | |
| 3 | YC8-BZ-0 | Hydraulic unit | 1 | |
| 4 | 0203006 | Nut M8 - GB6170 | 3 | |
| 5 | 0205008 | Washer D.8 - GB/T97.1 | 3 | |
| 6 | S551-00D | Electric unit | 1 | |
| 7 | 0201065 | Screw M10X30 - GB/T5781 | 4 | |
| 8 | 0205011 | Washer D.10 - GB/T97.1 | 8 | |
| 9 | YC8-2400991B | Too arm pin | 1 | |
| 10 | YC8-3001067 | Washer | 3 | |
| 11 | 0201092 | Screw M14X30 - GB/T5781 | 3 | |
| 12 | YC8-1000000 | Frame and carriage | 1 | |
| 13 | YC8-60-0 | Arm cylinder | 1 | |
| 14 | 0212021 | Seeger D.30 - GB/T894.1 | 2 | |
| 15 | YC8-3001069 | U bolt | 1 | |
| 16 | 0206012 | Screw M4X10 - GB/T818 | 2 | |
| 17 | 0205002 | Washer D.4 - GB/T97.1 | 2 | |
| 18 | YC8-3000948C | Cover | 1 | |
| 19 | 0203011 | Nut M10 - GB6170 | 2 | |
| 20 | YC8-2400935A | Support | 1 | |
| 21 | 0212003 | Seeger D.24 - GB/T894.1 24 | 2 | |
| 22 | YC8-4399289 | Washer | 2 | |
| 23 | YC8-3001003B | Pin | 1 | |
| 24 | 0202024 | Screw M6X12 - GB/T70.1 | 7 | |
| 25 | 0205006 | Washer D.6 - GB/T97.1 | 5 | |
| 26 | YC8-2400949 | Cylinder cover | 1 | |
| 27 | YC8-2000000B | Chuck | 1 | |

| | | | |
|-------|------------------|--|-----------|
| TAV.0 | GENERAL ASSEMBLY | | ED. 12/13 |
|-------|------------------|--|-----------|

| | | | |
|----|--------------|-------------------------|---|
| 28 | YC8-3001074 | Cylinder cover | 1 |
| 29 | 0202056 | Screw M10X16 - GB/T70.1 | 2 |
| 30 | YC8-60B-0 | Carriage cylinder | 1 |
| 31 | YC8-2001000 | Tools | 1 |
| 32 | YC8-3001004A | Arm shaft | 1 |
| 33 | YC8-3000988 | Pin | 1 |
| 34 | 303BD12000 | Pedal control | 1 |



| | | |
|---------|-----------|-----------|
| TAV.1.0 | CHUCK ARM | ED. 12/13 |
|---------|-----------|-----------|

| ITEM | PART NO. | DESCRIPTION | QTY | REMARK |
|------|-------------|--|-----|--------|
| 1 | YC8-2400985 | Chuck arm | 1 | |
| 2 | 0511119 | Felt 115X106X5 | 1 | |
| 3 | YC8-3001738 | Ring for felt | 1 | |
| 4 | YC8-3001056 | Spacer | 2 | |
| 5 | YC8-3001057 | Self-lubricated washer | 2 | |
| 6 | YC8-4299308 | Steel ring | 2 | |
| 7 | GB1235 | O-ring 90X5.3 | 2 | |
| 8 | 0606064 | Under cap D.13 | 1 | |
| 9 | 0205011 | Washer D.10 - GB/T97.1 | 18 | |
| 10 | 0201049 | Screw M10X30 - GB/T5783 | 4 | |
| 11 | YC8-2400974 | Motor support | 1 | |
| 12 | 0201068 | Screw M10X40 - GB/T5782 | 6 | |
| 13 | 0205010 | Washer D.10 - GB/T96 | 4 | |
| 14 | 0209032 | Screw M8X12 - GB/T80 | 1 | |
| 15 | YC8-3000975 | Motor pulley | 1 | |
| 16 | 0202043 | Screw M8X12 - GB/T70.1 | 4 | |
| 17 | 0205008 | Washer D.8 - GB/T97.1 | 2 | |
| 18 | YC8-2400943 | Belt casing | 1 | |
| 19 | 0511051 | Driven belt V 760 | 2 | |
| 20 | YC8-4299330 | Spacer | 1 | |
| 21 | 0208007 | Washer D.10 - GB/T93 | 5 | |
| 22 | 0203011 | Nut M10 - GB6170 | 5 | |
| 23a | 0509031 | Double speed motor 1.3KW/1.8KW 380V/50HZ/3PH | 1 | |
| 23b | 0509077 | Double speed motor 1.3KW/1.8KW 400V/50HZ/3PH | 1 | |
| 23c | 0509030 | Double speed motor 1.3KW/1.8KW 380V/60HZ/3PH | 1 | |
| 23d | 0509086 | Double speed motor 1.3KW/1.8KW 220V/60HZ/3PH | 1 | |
| 24 | YC8-3001041 | Bush for chuck rod | 2 | |

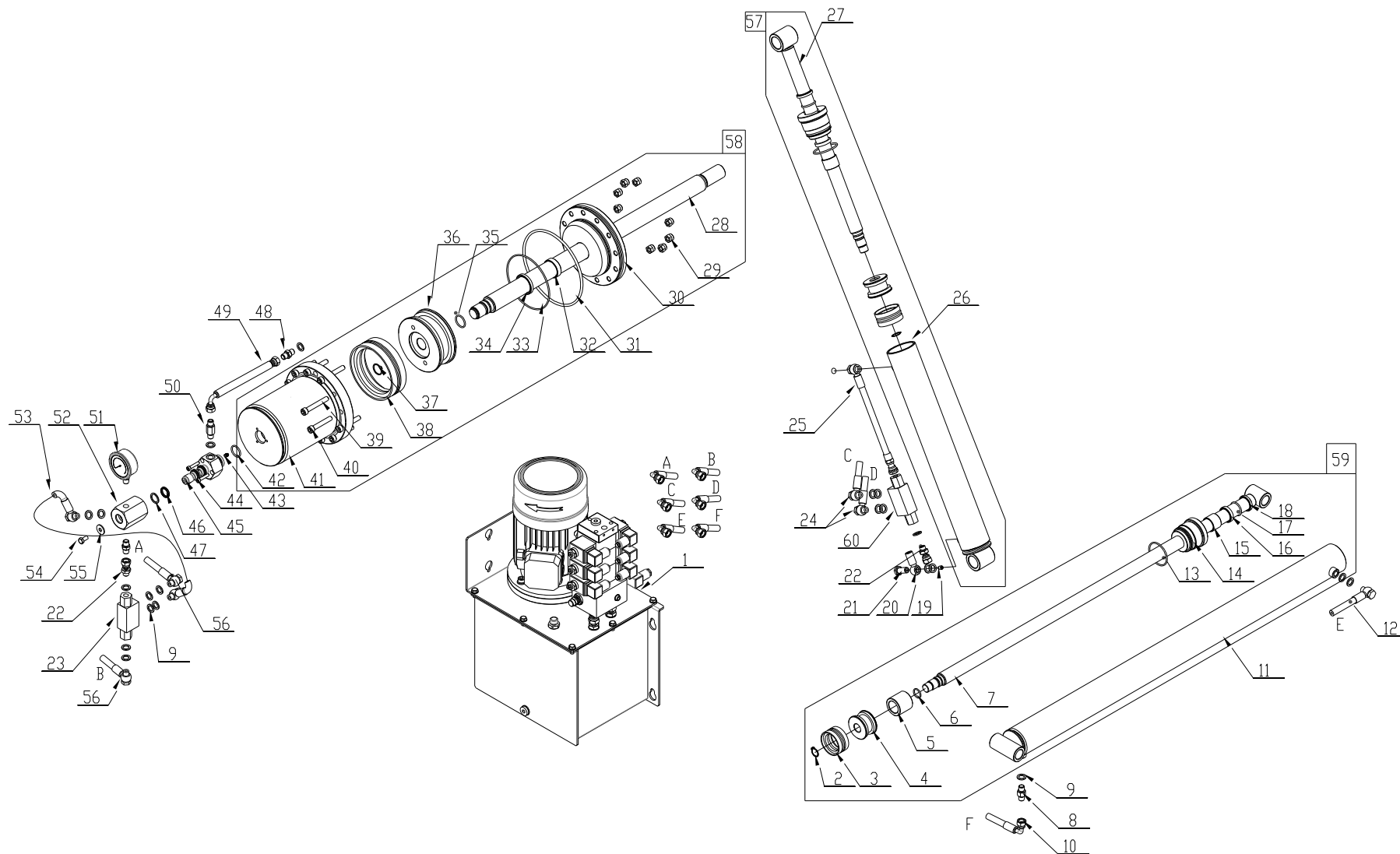
| | | | |
|----|--------------|--|----|
| 25 | GB/T3452.1 | O-ring 97.5X3.55 | 1 |
| 26 | 0201051 | Screw M10X45 - GB/T5782 | 6 |
| 27 | 0201030 | Screw M10X30 - GB/T5781 | 1 |
| 28 | 0203006 | Nut M6 - GB6170 | 25 |
| 29 | YC8-2400995 | Cover | 1 |
| 30 | YC8-3001051 | Gasket | 1 |
| 31 | GB/T276 | Bearing 6205 | 2 |
| 32 | 0204014 | Nut M16X1.5 - GB/T6173 | 2 |
| 33 | YC8-3001114 | Washer | 1 |
| 34 | YC8-3001115 | Spacer | 1 |
| 35 | 0214009 | Bearing 51205 - GB/T301 | 2 |
| 36 | 0202024 | Screw M6X12 - GB/T70.1 | 2 |
| 37 | YC8-3001010 | Oil screen | 1 |
| 38 | 0213025 | Tab 8X30 - GB/T1096 | 1 |
| 39 | 0213029 | Tab 20X60 - GB/T1096 | 2 |
| 40 | YC8-3010838A | Helical gear | 1 |
| 41 | YC8-3000998 | Cover | 1 |
| 42 | YC8-4199258 | Oil plug | 1 |
| 43 | 0202032 | Screw M6X16 - GB/T70.1 | 22 |
| 44 | YC8-6609764 | Pivot union cover | 1 |
| 45 | 0215024 | Oil level indicator M27X1.5 - GB1160.2 | 1 |
| 46 | 0305018 | Oil plug 3/8 | 1 |
| 47 | 0313012 | Washer 3/8 | 1 |
| 48 | 0202026 | Screw M6X30 - GB/T70.1 | 1 |
| 49 | YC8-3001009 | Worm support | 1 |
| 50 | YC8-3010861b | Worm screw | 1 |
| 51 | YC8-3000999a | Spacer | 1 |

TAV.1.0

CHUCK ARM

ED. 12/13

| | | | |
|----|--------------|-------------------------|---|
| 52 | YC8-3001052b | Driven pulley | 1 |
| 53 | YC8-3001068 | Washer | 1 |
| 54 | 0201062 | Screw M10X20 - GB/T5783 | 1 |
| 55 | YC8-3008803 | Wheel locking plate | 2 |
| 56 | YC8-140-0G | Chuck cylinder | 1 |



| | | |
|---------|----------------|-----------|
| TAV.3.0 | HYDRAULIC UNIT | ED. 12/13 |
|---------|----------------|-----------|

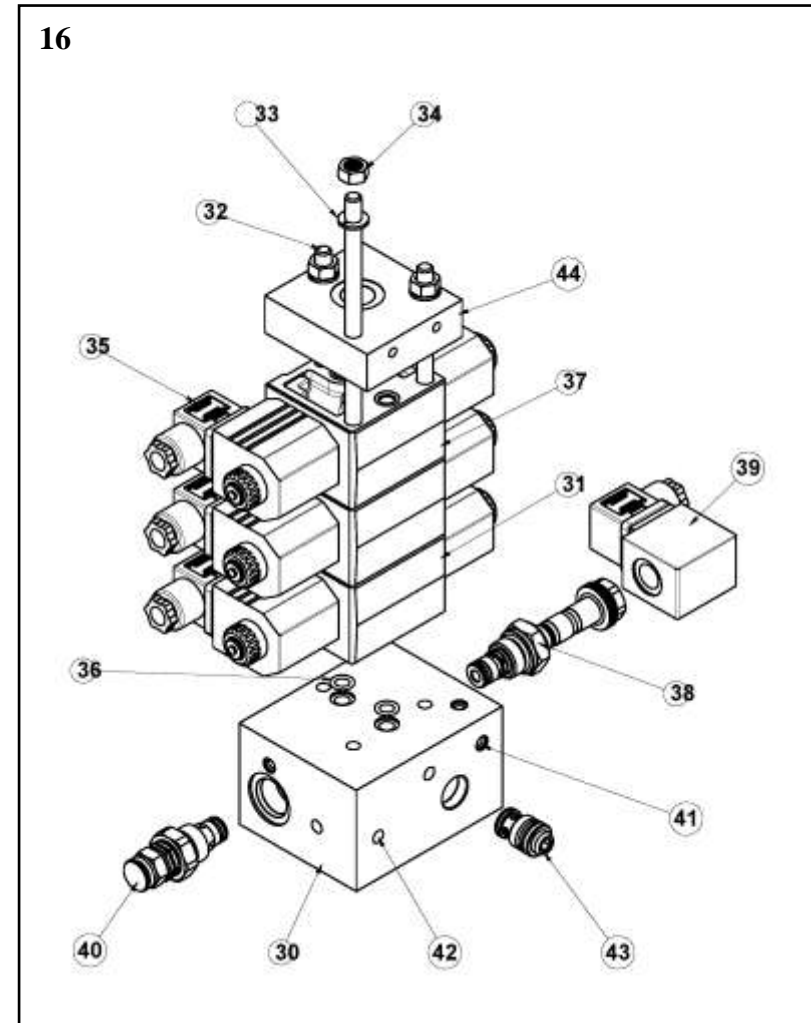
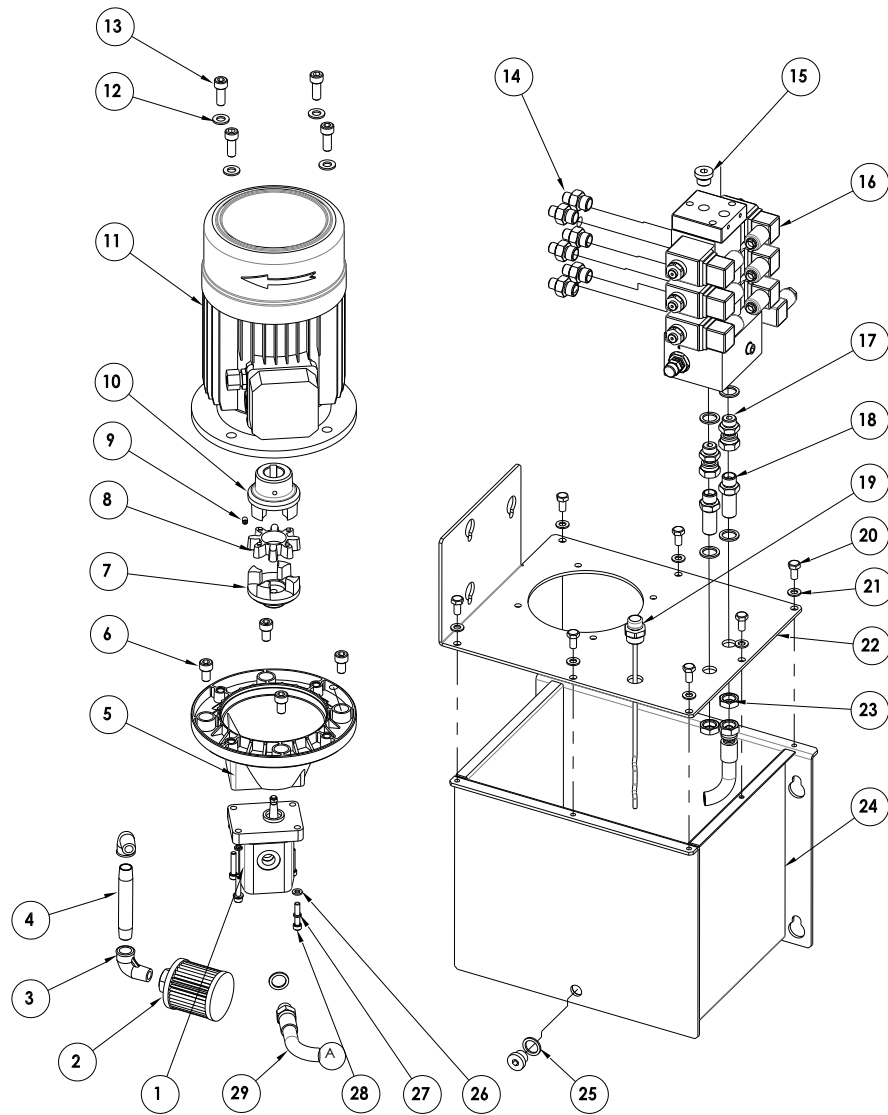
| ITEM | PART NO. | DESCRIPTION | QTY | REMARK |
|------|--------------|-----------------------|-----|--------|
| 1 | 303-BZ-0 | Power unit | 1 | |
| 2 | 0212005 | Seeger D.20 | 2 | |
| 3 | 0312002 | Gasket 60X44 | 2 | |
| 4 | YC8-60-3 | Piston | 2 | |
| 5 | YC8-60B-6 | Spacer | 1 | |
| 6 | 0309022 | O-ring 24X2.4 | 2 | |
| 7 | YC8-60B-4 | Piston rod | 1 | |
| 8 | 0302003 | 1/4 union | 1 | |
| 9 | 0313001 | Washer 1/4 | 25 | |
| 10 | 303-WW2140 | Hydraulic hose L=2140 | 1 | |
| 11 | YC8-60B-10 | Cylinder liner | 1 | |
| 12 | 303-WJ2700 | Hydraulic hose L=2700 | 1 | |
| 13 | 0309032 | O-ring 60X3.1 | 2 | |
| 14 | YC8-60-5 | Cylinder guide cover | 2 | |
| 15 | 0305006 | Guide ring 30X25X2.5 | 2 | |
| 16 | 0310009 | Sealing ring 30X38X7 | 2 | |
| 17 | 0309027 | O-ring 35X3.1 | 2 | |
| 18 | 0311005 | Scraper D.30 | 2 | |
| 19 | BZ-GZ-002 | Special screw | 1 | |
| 20 | 0304010 | Rotation union 1/4 | 1 | |
| 21 | BZ-720B-0401 | Special screw | 1 | |
| 22 | 0305002 | Union 1/4 | 2 | |
| 23 | 0307020 | Stop valve BP17000000 | 1 | |
| 24 | 303-WJ1300 | Hydraulic hose L=1300 | 2 | |
| 25 | 303-ZJ250 | Hydraulic hose L=250 | 1 | |
| 26 | YC8-60-10 | Cylinder liner | 1 | |
| 27 | YC8-60-4 | Cylinder shaft | 1 | |

| | | |
|---------|----------------|-----------|
| TAV.3.0 | HYDRAULIC UNIT | ED. 12/13 |
|---------|----------------|-----------|

| | | | |
|----|--------------|-----------------------|---|
| 28 | YC8-140-6 | Cylinder shaft | 1 |
| 29 | 0204005 | Self -locking nut M10 | 8 |
| 30 | YC8-140-7 | Cylinder guide cover | 1 |
| 31 | 0309049 | O-ring 195X5.7 | 1 |
| 32 | 0305012 | Guide ring 40X12X2.52 | 1 |
| 33 | 0309046 | O-ring 140X3.1 | 1 |
| 34 | 0310013 | Sealing ring 40X50X6 | 1 |
| 35 | 0309025 | O-ring 32X3.1 | 1 |
| 36 | YC8-140-5 | Piston | 1 |
| 37 | 0212006 | Seeger D.26 | 1 |
| 38 | 0312008 | Gasket 140X115X25.4 | 1 |
| 39 | 0202057 | Screw M10X70 | 4 |
| 40 | 0202065 | Screw M10X60 | 8 |
| 41 | YC8-140-4 | Cylinder liner | 1 |
| 42 | 0309025 | O-ring 30X3.1 | 1 |
| 43 | 0305001 | Plug | 1 |
| 44 | 0202026 | Screw M6X30 | 3 |
| 45 | YC8-140-3 | Pin | 1 |
| 46 | 0313014 | Sealing ring 20X3.53 | 3 |
| 47 | C-2C120-85-7 | Ring | 3 |
| 48 | 0302007 | Union 1/4 | 3 |
| 49 | 303-ZW170 | Hydraulic hose L=170 | 1 |
| 50 | 0302004 | Union 1/4 | 1 |
| 51 | 0307052 | Pressure gauge 250bar | 1 |
| 52 | YC8-140-2 | Pivot union body | 1 |
| 53 | 303-JJ410 | Hydraulic hose L=410 | 2 |
| 54 | 0201026 | Screw M8X16 | 1 |

| | | |
|---------|----------------|-----------|
| TAV.3.0 | HYDRAULIC UNIT | ED. 12/13 |
|---------|----------------|-----------|

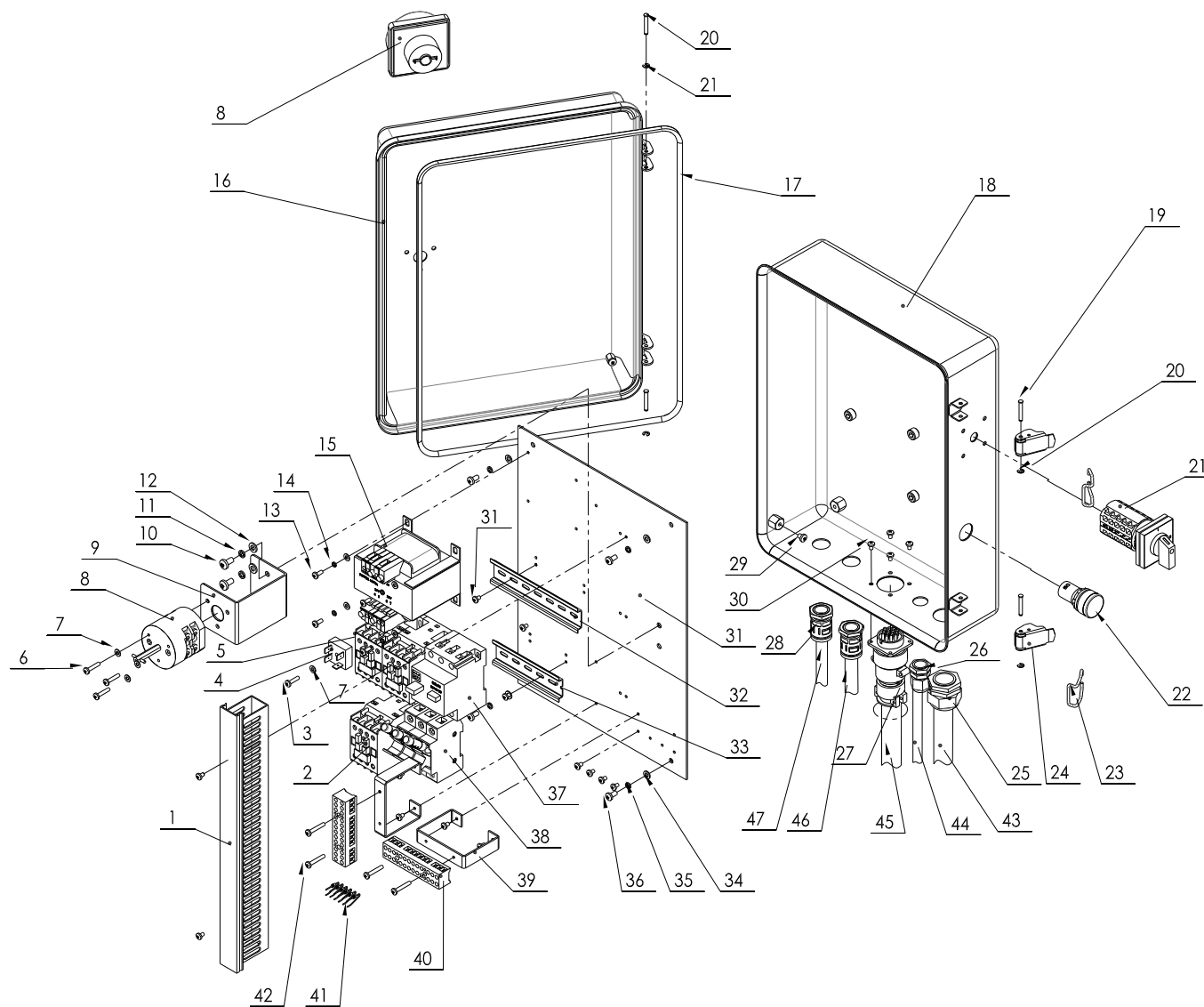
| | | | |
|----|------------|-----------------------|---|
| 55 | 0205009 | Washer D.8 | 1 |
| 56 | 303-WJ1800 | Hydraulic hose L=1800 | 2 |
| 57 | YC8-60-0 | Arm cylinder | 1 |
| 58 | YC8-140-0 | Chuck cylinder | 1 |
| 59 | YC8-60B-0 | Carriage cylinder | 1 |
| 60 | 0307042 | Stop valve BP25000000 | 1 |



| | | |
|---------|------------|-----------|
| TAV.3.1 | POWER UNIT | ED. 12/13 |
|---------|------------|-----------|

| ITEM | PART NO. | DESCRIPTION | QTY | REMARK |
|------|--------------|---|-----|--------|
| 1 | 0301005 | Gear pump 4.2CC | 1 | |
| 2 | 0305011 | Oil filter 3/8 | 1 | |
| 3 | 5T9-06ST | Union | 2 | |
| 4 | BZ-G18X100 | Oil draining pipe | 1 | |
| 5 | YC8-4197872 | Motor flange | 1 | |
| 6 | GB/T70.1 | Screw M10X16 | 4 | |
| 7 | YC8-4197873C | Pump joint | 1 | |
| 8 | YC8-4197873A | Rubber absorber | 1 | |
| 9 | 0209009 | Screw M6X8 - GB/T80 | 1 | |
| 10 | YC8-4197873B | Motor joint | 1 | |
| 11a | 0509041 | Motor 1.1KW 380V/50HZ/3PH | 1 | |
| 11b | 0509048 | Motor 1.1KW 400V/50HZ/3PH | 1 | |
| 11c | 0509024 | Motor 1.1KW 380V/60HZ/3PH | 1 | |
| 11d | 0509085 | Motor 1.1KW 220V/60HZ/3PH | 1 | |
| 12 | 0205011 | Washer D.10 - GB/T97.1 | 4 | |
| 13 | 0202061 | Screw M10X25 - GB/T70.1 | 4 | |
| 14 | 1B-06-04WD | Nipple | 6 | |
| 15 | 0305018 | Oil plug 3/8 | 2 | |
| 16 | 0307046 | Multiple base with solenoid valves PR09007B | 1 | |
| 17 | 0305003 | Union 3/8 | 2 | |
| 18 | 0305004 | Union 3/8 | 2 | |
| 19 | YC8-3010652 | Oil lever plug | 1 | |
| 20 | GB/T5783 | Screw M8X16 A | 7 | |
| 21 | 0205008 | Washer D.8 - GB/T97.1 | 7 | |
| 22 | YC8-6609758 | Tank cover | 1 | |
| 23 | 0305045 | Special nut | 2 | |
| 24 | YC8-2409757 | Oil tank | 1 | |

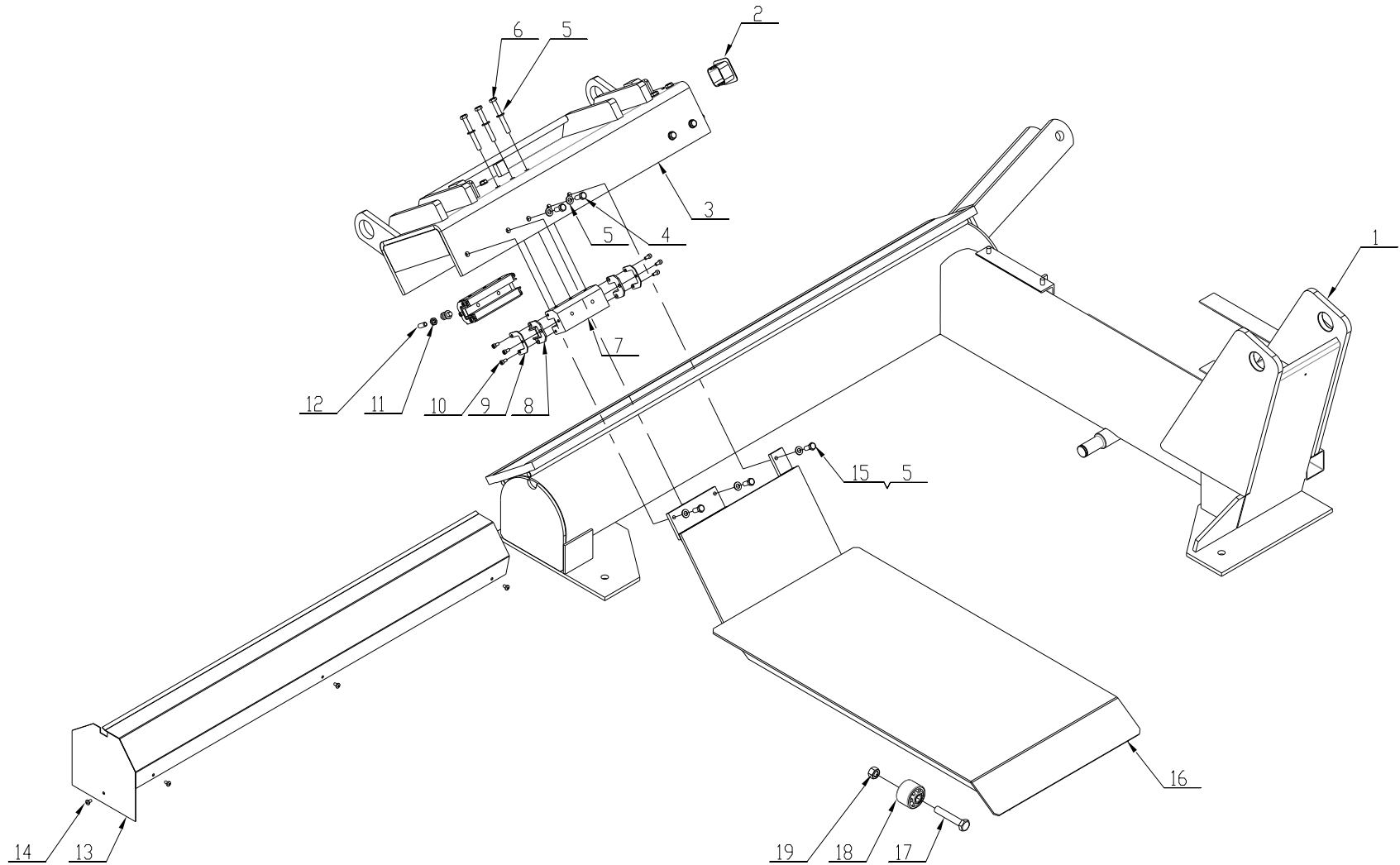
| | | | |
|----|-----------------|--|---|
| 25 | 0313012 | Washer 3/8 | 6 |
| 26 | 0205006 | Washer D.6 - GB/T97.1 | 4 |
| 27 | 0208005 | Washer D.6 - GB/T93 | 4 |
| 28 | 0202026 | Screw M6X30 - GB/T70.1 | 4 |
| 29 | 303-ZY(5/16)390 | Hydraulic hose L=390 | 1 |
| 30 | 0307108 | Interface block PR09007C | 1 |
| 31 | 0307096 | ED06Z Modular directional valve 24Vdc C161401002 | 2 |
| 32 | K211524000 | Stud M8x190 | 3 |
| 33 | C012506000 | Washer D.8 DIN128A | 3 |
| 34 | C010506000 | Nut M8 UNI 5588 | 3 |
| 35 | C160001000 | Standard connector black | 6 |
| 36 | C000110000 | Seal OR 108 (8.73X1.78) NBR70 | 2 |
| 37 | 0307097 | ED08Z Modular directional valve 24Vdc C161403002 | 1 |
| 38 | 0307098 | 2/2 Electric valve normally open VE3-NA V389674A20 | 1 |
| 39 | C166455OC2 | S-CE+C coil 24Vcc 18W with connector | 1 |
| 40 | V388904A23 | VM15 Relief valve 80-250bar | 1 |
| 41 | C011707000 | Ball sealing plug MB800-080 | 5 |
| 42 | C011804000 | Sealing plug D.7 | 3 |
| 43 | V389209000 | VU3/8" Check valve | 1 |
| 44 | 0307108 | Closing plate with P port 3/8"BSPP R933003329 | 1 |



| ITEM | PART NO. | DESCRIPTION | QTY | REMARK |
|------|-----------|-----------------------------|-----|--------|
| 1 | 0511078 | Wiring terminal 25X50X370 | 1 | |
| 2 | 0501002 | Contactor 1201 AC24V | 1 | |
| 3 | 0206015 | Screw M4X16 | 1 | |
| 4 | 0508006 | Rectifier 3510 | 1 | |
| 5 | 0501004 | Contactor 1801 AC24V | 2 | |
| 6 | 0206016 | Screw M4X20 | 3 | |
| 7 | 0205002 | Washer D.4 | 8 | |
| 8 | 0505025 | Power switch 20A | 1 | |
| 9 | CC-850222 | Switch support | 1 | |
| 10 | 0206040 | Screw M6X12 | 2 | |
| 11 | 0208005 | Locking washer D.6 | 2 | |
| 12 | 0205006 | Washer D.6 | 2 | |
| 13 | 0206012 | Screw M4X10 | 4 | |
| 14 | 0208002 | Locking washer D.4 | 4 | |
| 15 | 0503067 | Transformer 115VA 230V/400V | 1 | |
| 16 | S551-02 | Front cover | 1 | |
| 17 | 0511026 | Gasket | 1 | |
| 18 | S551-01D | Back cover | 1 | |
| 19 | S551-6 | Pin | 4 | |
| 20 | 0211018 | Seeger D.3 | 4 | |
| 21 | 0505013 | Pole change switch 20A | 1 | |
| 22 | 0502023 | Pilot lamp AC24V | 1 | |
| 23 | S551-4 | Hook | 2 | |
| 24 | S551-5 | Clamp | 2 | |
| 25 | 0508012 | Cable relief M27 | 1 | |
| 26 | 0508253 | Cable relief M20 | 1 | |
| 27 | 0508280 | Cable connector P32-14 | 1 | |

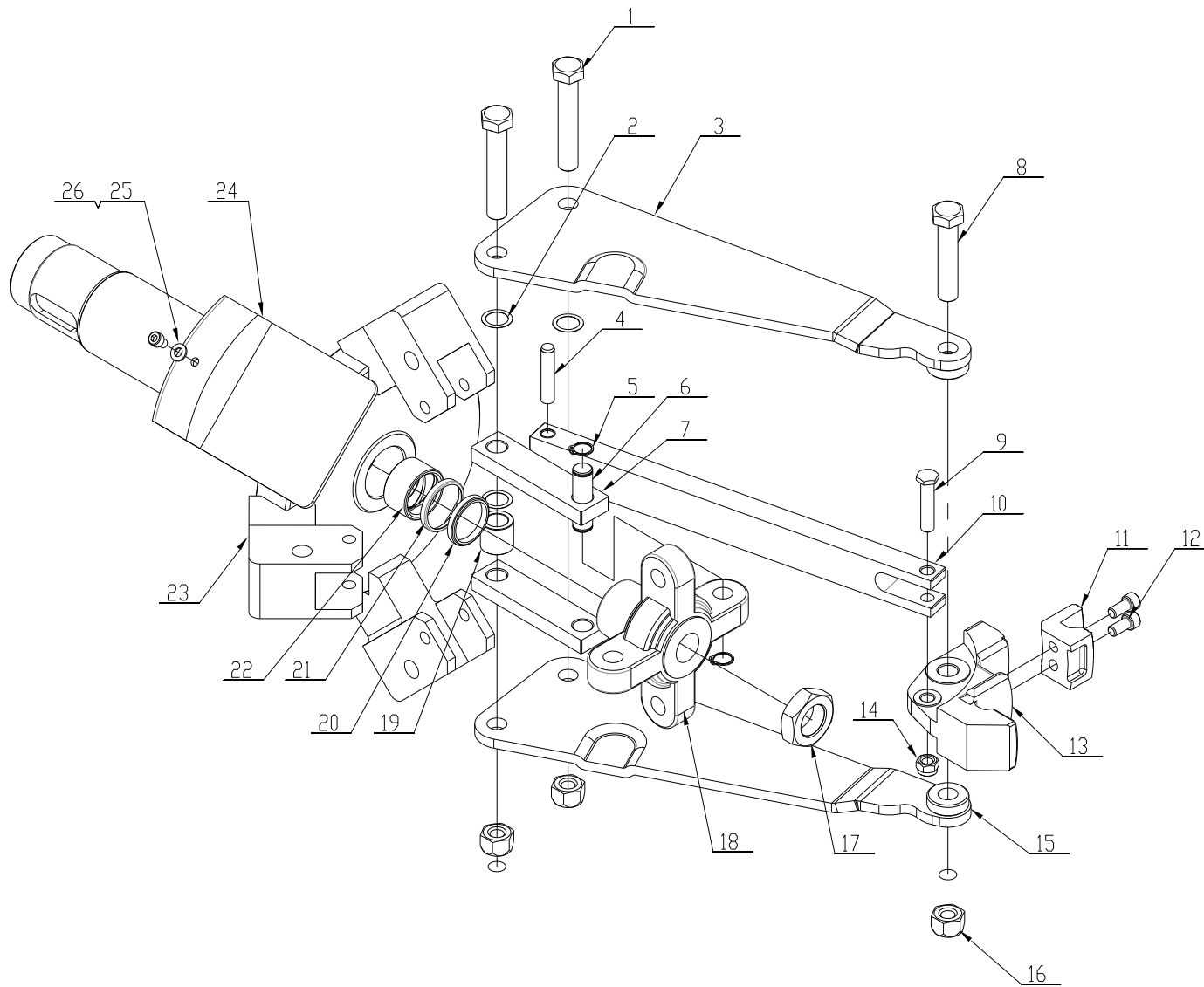
| | | |
|---------|---------------|-----------|
| TAV.6.0 | ELECTRIC UNIT | ED. 12/13 |
|---------|---------------|-----------|

| | | | |
|-----|------------|---|----|
| 28 | 0507118 | Conduit connector M20-D18.5 | 2 |
| 29 | 0206014 | Screw M5X6 | 2 |
| 30 | 0206019 | Screw M4X6 | 18 |
| 31 | 3054510400 | Support | 1 |
| 32 | 0508330 | Guide 35X145 | 1 |
| 33 | 0508330 | Guide 35X110 | 1 |
| 34 | 0205004 | Washer D.5 | 4 |
| 35 | 0208003 | Locking washer D.5 | 4 |
| 36 | 0206024 | Screw M5X10 | 4 |
| 37 | 0501020 | Circuit breaker 6.3-10A | 1 |
| 38a | 0504009 | Overload cutoff 16A 10X38 for 380V/400V | 3 |
| 38b | 0504013 | Overload cutoff 32A 10X38 for 220V/230V | 2 |
| 39 | CC-850223 | Support | 2 |
| 40 | 0507009 | Terminal board H3081-12 | 2 |
| 41 | 0507027 | LED IN5408 | 6 |
| 42 | 0206017 | Screw M4X25 | 4 |
| 43 | C53AD13050 | Electric cable for the valves | 1 |
| 44 | 0506016 | Electric cable for the power supply | 1 |
| 45 | C53AD13030 | Electric cable for the pedal control | 1 |
| 46 | 0506016 | Electric cable for power unit motor | 1 |
| 47 | C53AD13010 | Electric cable for the chuck motor | 1 |



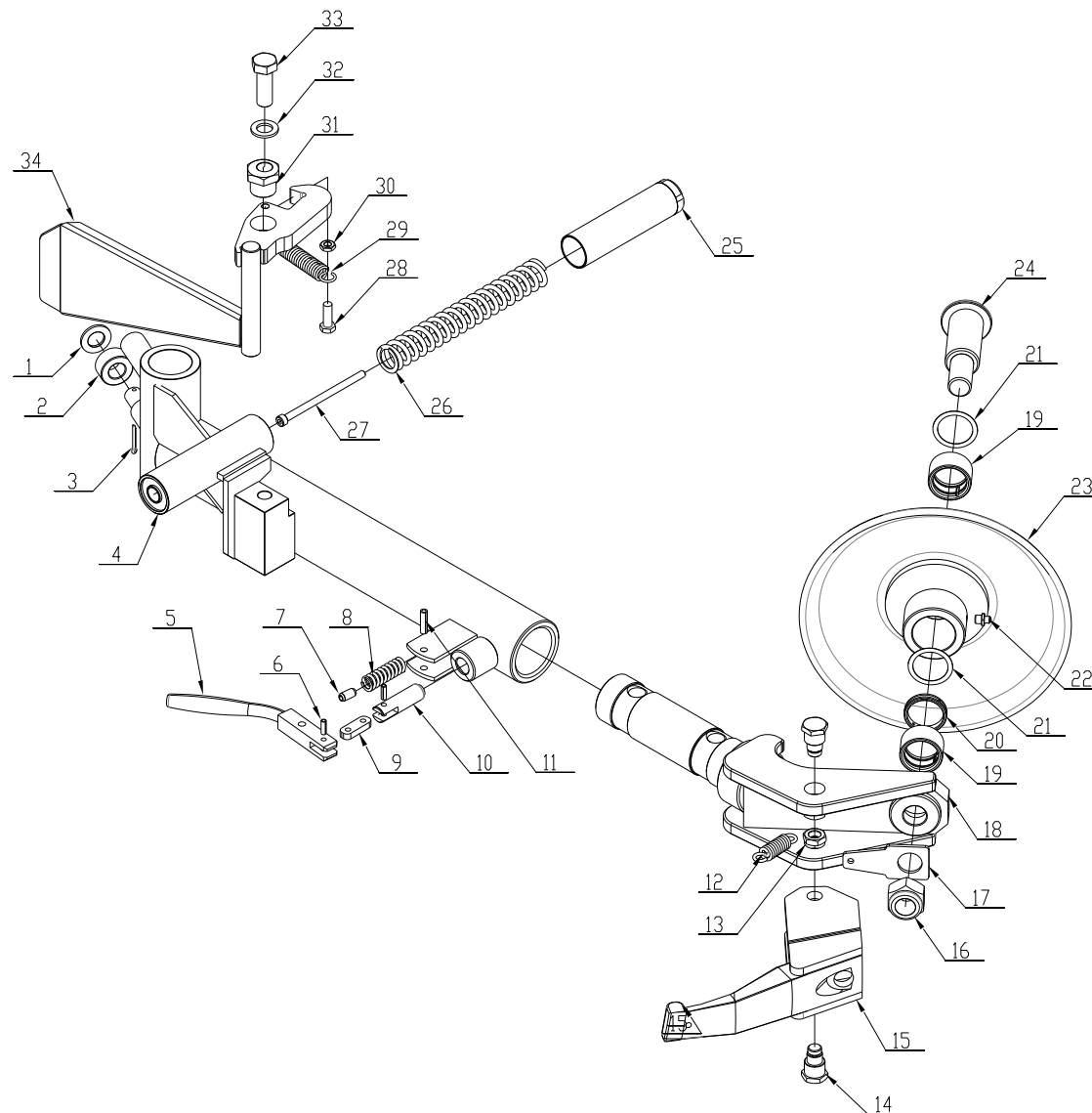
| | | |
|----------|--------------------|-----------|
| TAV.12.0 | FRAME AND CARRIAGE | ED. 12/13 |
|----------|--------------------|-----------|

| ITEM | PART NO. | DESCRIPTION | QTY | REMARK |
|------|--------------|-------------------------|-----|--------|
| 1 | YC8-2400989A | Frame | 1 | |
| 2 | YC8-4299252 | Carriage terminal unit | 2 | |
| 3 | YC8-2400979 | Carriage | 1 | |
| 4 | 0201063 | Screw M10X25 - GB/T5781 | 8 | |
| 5 | 0205011 | Washer D.10 - GB/T97.1 | 21 | |
| 6 | 0201054 | Screw M10X85 - GB/T5782 | 10 | |
| 7 | YC8-3000980A | Carriage slide | 4 | |
| 8 | YC8-4299307 | Scraper | 8 | |
| 9 | YC8-3001062 | Side plate | 8 | |
| 10 | 0202024 | Screw M6X12 - GB/T70.1 | 24 | |
| 11 | 0204012 | Nut M10 - GB/T 6172.1 | 4 | |
| 12 | 0209024 | Screw M10X25 - GB/T77 | 4 | |
| 13 | YC8-2404501 | Cover | 1 | |
| 14 | 0206031 | Screw M6X10 - GB/T818 | 4 | |
| 15 | 0201064 | Screw M10X25 - GB/T5783 | 3 | |
| 16 | YC8-2400990C | Ramp | 1 | |
| 17 | 0201099 | Screw M16X90 - GB/T5782 | 2 | |
| 18 | YC8-4299251 | Roller | 2 | |
| 19 | 0203017 | Nut M16 - GB/T6170 | 2 | |



| | | |
|----------|-------|-----------|
| TAV.27.0 | CHUCK | ED. 12/13 |
|----------|-------|-----------|

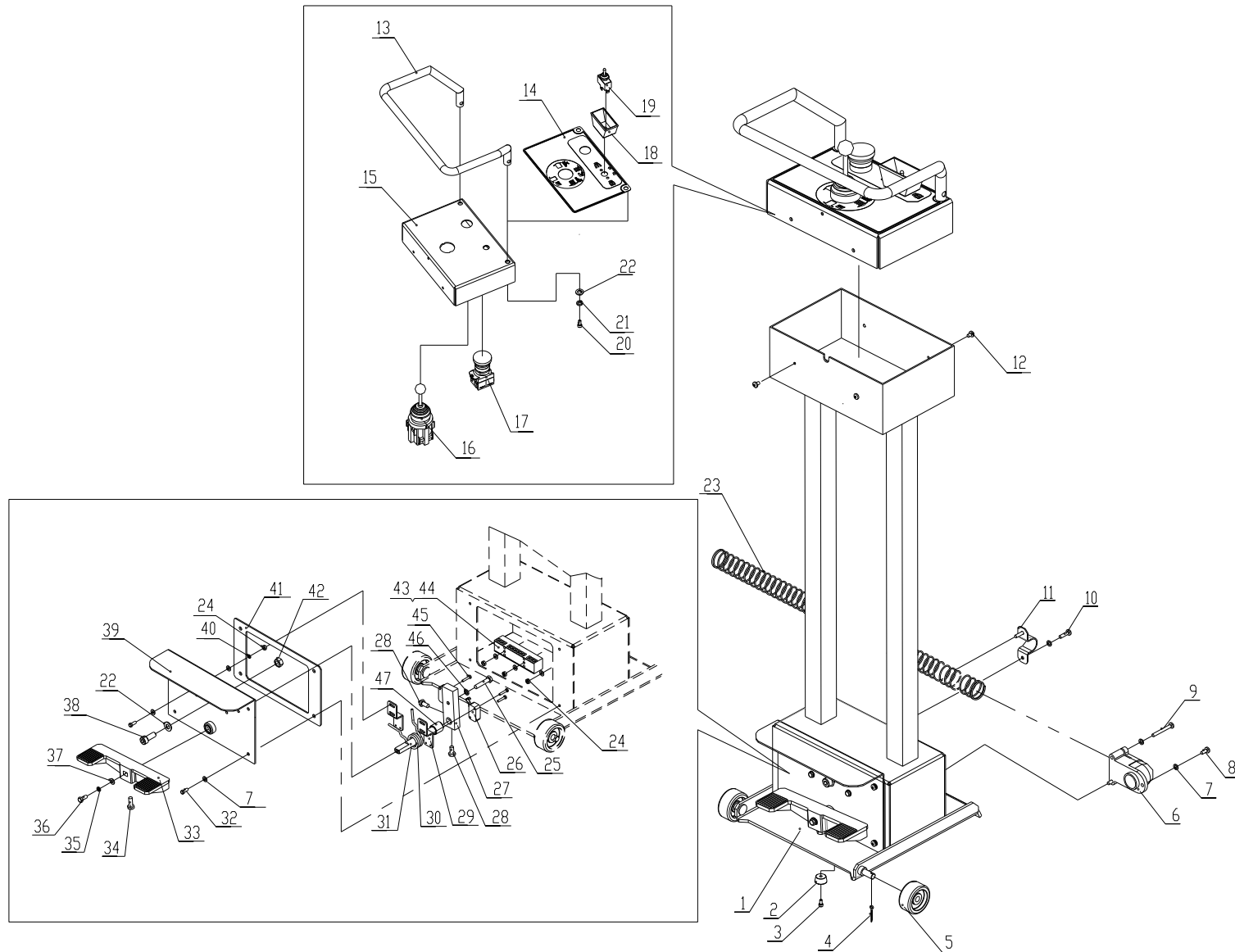
| ITEM | PART NO. | DESCRIPTION | QTY | REMARK |
|------|--------------|-------------------------------|-----|--------|
| 1 | 0201105 | Screw M18X1.5X100 - GB/T5785 | 8 | |
| 2 | YC8-4399974 | Copper washer | 16 | |
| 3 | YC8-2400929b | Chuck left arm | 4 | |
| 4 | 0213039 | Elastic pin 12X60 - GB/T119.1 | 4 | |
| 5 | 0212016 | Seeger D.18 - GB/T894.1 | 8 | |
| 6 | YC8-3000993 | Pin | 4 | |
| 7 | YC8-3001044a | Connection rod | 8 | |
| 8 | 0201107 | Screw M18X1.5X85 - GB/T5785 | 4 | |
| 9 | YC8-3000968 | Special screw | 4 | |
| 10 | YC8-3000992 | Bar | 4 | |
| 11 | CC-510101 | Clamp | 4 | |
| 12 | 0202060 | Screw M10X20 - GB/T70.1 | 8 | |
| 13 | YC8-3000924 | Clamp support | 4 | |
| 14 | 0204007 | Nut M12 - GB/T889.1 | 4 | |
| 15 | YC8-2400931b | Chuck right arm | 4 | |
| 16 | 0204010 | Nut M18X1.5 - GB/T6184 | 12 | |
| 17 | 0204019 | Nut M33X2.0 - GB/T6173 | 1 | |
| 18 | YC8-3001050a | Turntable cross | 1 | |
| 19 | YC8-3000994 | Spacer | 4 | |
| 20 | 0311008 | Scraper D.40 | 1 | |
| 21 | YC8-4299309 | Steel ring for scraper | 1 | |
| 22 | YC8-3010893A | Bush for chuck rod | 1 | |
| 23 | YC8-2401794A | Chuck turntable | 1 | |
| 24 | YC8-3005740A | Chuck protection | 4 | |
| 25 | 0205008 | Washer D.8 - GB/T97.1 | 4 | |
| 26 | 0202097 | Screw M8X10 - GB/T70.1 | 4 | |



| ITEM | PART NO. | DESCRIPTION | QTY | REMARK |
|------|--------------|-------------------------------|-----|--------|
| 1 | 0205022 | Washer D.20 - GB/T97.1 | 1 | |
| 2 | YC8-3001039 | Roller | 1 | |
| 3 | 0213035 | Split pin 4X28 - GB/T91 | 1 | |
| 4 | YC8-2400983d | Tool holder | 1 | |
| 5 | YC8-3001030b | Lever | 1 | |
| 6 | 0213005 | Elastic pin 6X18 - GB/T879.1 | 2 | |
| 7 | 0213001 | Elastic pin 10X20 - GB/T879.1 | 1 | |
| 8 | YC8-3001040 | Spring | 1 | |
| 9 | YC8-3001028 | Connection rod | 1 | |
| 10 | YC8-3001029 | Sliding bolt | 1 | |
| 11 | 0213007 | Elastic pin 8X30 - GB/T879.1 | 1 | |
| 12 | CC-620005 | Spring | 1 | |
| 13 | 0204014 | Nut M16X1.5 - GB/T6173 | 2 | |
| 14 | YC8-3010837 | Pin | 2 | |
| 15 | C56B423000 | Long tool | 1 | |
| 16 | 0204011 | Nut M27 - GB/T889.1 | 1 | |
| 17 | CC-620004 | Spring connection | 1 | |
| 18 | YC8-2410832d | Support | 1 | |
| 19 | CC-620002 | Bead breaking disk bush | 2 | |
| 20 | CC-620003 | Spacer | 1 | |
| 21 | YC8-4396915 | Steel shim | 2 | |
| 22 | 0215021 | Greaser M8X1 - GB1152 | 1 | |
| 23 | YC8-2410857a | Bead breaking disk | 1 | |
| 24 | CC-620001 | Pin | 1 | |
| 25 | YC8-2400984 | Expeller | 1 | |
| 26 | YC8-3001038 | Spring | 1 | |
| 27 | 0202039 | Screw M8X130 - GB/T70.1 | 1 | |

| | | |
|----------|-------|-----------|
| TAV.31.0 | TOOLS | ED. 12/13 |
|----------|-------|-----------|

| | | | |
|----|--------------|-------------------------|---|
| 28 | 0201049 | Screw M10X30 - GB/T5783 | 1 |
| 29 | YC1-3000114 | Bead breaking spring | 1 |
| 30 | 0204012 | Nut M10 - GB/T6172.1 | 1 |
| 31 | YC8-3001031b | Cam | 1 |
| 32 | 0205021 | Washer D.18 - GB/T97.1 | 1 |
| 33 | 0201108 | Screw M18X50 - GB/T5783 | 1 |
| 34 | YC8-2400932d | Hook | 1 |



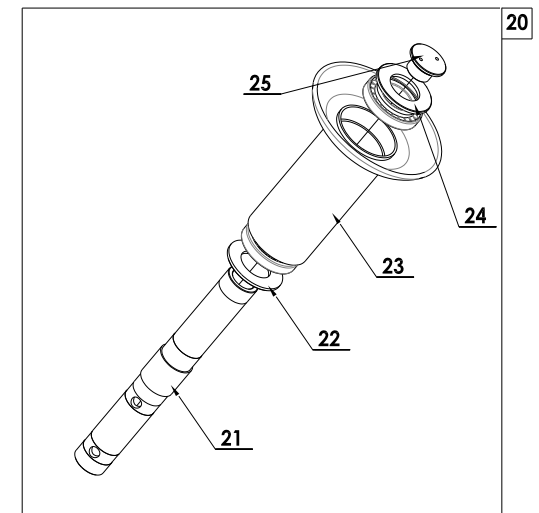
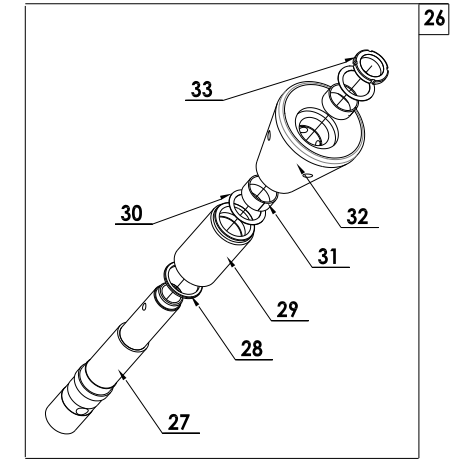
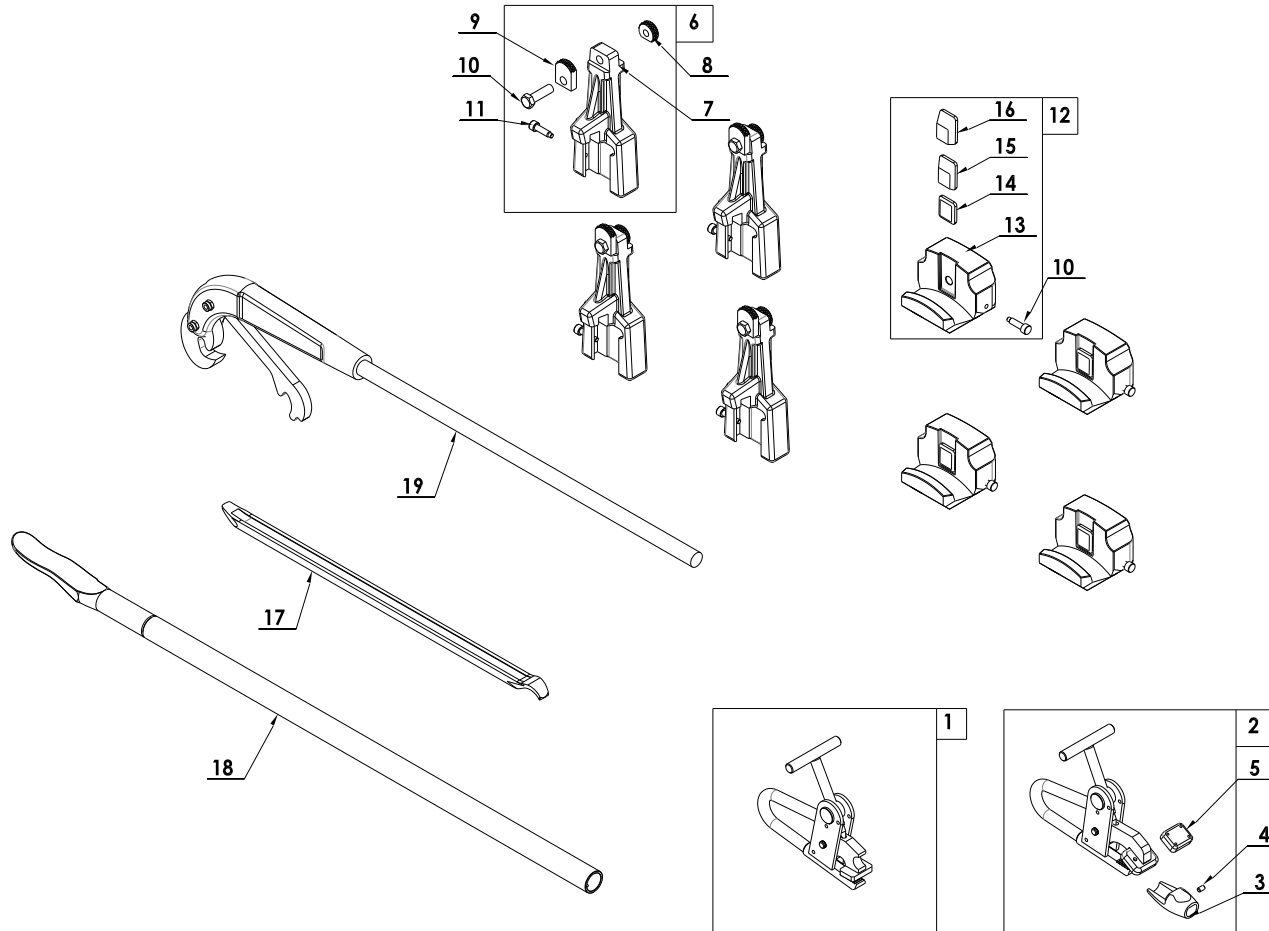
| | | |
|----------|---------------|-----------|
| TAV.34.0 | PADEL CONTROL | ED. 12/13 |
|----------|---------------|-----------|

| ITEM | PART NO. | DESCRIPTION | QTY | REMARK |
|------|-------------|----------------------------|-----|--------|
| 1 | C56BD12100 | Pedal unit base | 1 | |
| 2 | C56BD12004 | Rubber foot | 2 | |
| 3 | 0206015 | Screw M5X10 - GB/T70.1 | 2 | |
| 4 | 0213044 | Split pin 2X20 - GB/T91 | 2 | |
| 5 | C56BD12001 | Wheel | 2 | |
| 6 | YC8-3000901 | Harness holder | 1 | |
| 7 | 0205002 | Washer D.4 - GB/T97.1 | 25 | |
| 8 | 0206012 | Screw M4X10 - GB/T818 | 1 | |
| 9 | 0206022 | Screw M4X35 - GB/T818 | 2 | |
| 10 | 0206015 | Screw M4X16 - GB/T818 | 2 | |
| 11 | YC8-3001069 | U bolt | 1 | |
| 12 | 0206019 | Screw M4X6 - GB/T818 | 4 | |
| 13 | C56BD12200 | Handle | 1 | |
| 14 | 303BD12401 | Control decal | 1 | |
| 15 | 303BD12003 | Control panel | 1 | |
| 16 | 0505010 | Manipulator | 1 | |
| 17 | 0502044 | Emergency stop knob | 1 | |
| 18 | C56BD12002 | Switch protection | 1 | |
| 19 | 0505016 | Switch123 | 1 | |
| 20 | 0202040 | Screw M8X16 - GB/T70.1 | 2 | |
| 21 | 0208006 | Spring washer D.8 - GB/T93 | 2 | |
| 22 | 0205008 | Washer D.8 - GB/T97.1 | 3 | |
| 23 | C56BD10001 | Cable conduit | 1 | |
| 24 | 0203002 | Nut M4 | 8 | |
| 25 | 0201019 | Screw M6X30 - GB/T5781 | 1 | |
| 26 | 0505014 | Micro switch | 2 | |
| 27 | YC8-3001131 | Lever | 1 | |

| | | | |
|----|--------------|----------------------------|---|
| 28 | 0201010 | Screw M6X12 | 2 |
| 29 | YC8-3001143a | Switch support | 2 |
| 30 | YC8-3007133b | Pedal control spring | 1 |
| 31 | YC8-3015413 | Spring support | 1 |
| 32 | 0201001 | Screw M4X10 - GB/T5782 | 8 |
| 33 | YC8-3015412 | Pedal | 1 |
| 34 | 0201012 | Screw M6X16 - GB/T5781 | 1 |
| 35 | 0208003 | Spring washer D.5 - GB/T93 | 1 |
| 36 | 0201006 | Screw M5X12 - GB/T5781 | 1 |
| 37 | 0205004 | Washer D.5 - GB/T97.1 | 1 |
| 38 | 0202045 | Screw M8X20 - GB/T70.1 | 1 |
| 39 | YC8-2400977 | Pedal box | 1 |
| 40 | 0208002 | Spring washer D.4 - GB/T93 | 8 |
| 41 | YC8-3001138 | Gasket | 1 |
| 42 | 0203029 | Nut M8 - GB/T6170 | 1 |
| 43 | 0507013 | Terminal board 6 | 1 |
| 44 | 0507009 | Terminal board12 | 1 |
| 45 | 0206002 | Screw M3X16 - GB/T818 | 4 |
| 46 | 0208005 | Spring washer D.6 - GB/T93 | 1 |
| 47 | YC8-3001135 | Spacer | 1 |

ACCESSORIES

ED. 12/13



ACCESSORIES

ED. 12/13

| ITEM | PART NO. | DESCRIPTION | QTY | REMARK |
|------|-------------|-------------------------------------|-----|----------|
| 1 | DB-11 | Pliers | 1 | |
| 2 | YC8-F200000 | Pliers for alloy rim Art. 138/90 | 1 | Optional |
| 3 | YC8-F202001 | Alloy protection | 1 | |
| 4 | YC8-F201001 | Block | 1 | |
| 5 | 0209037 | Screw M6X10 - GB/T80 | 1 | |
| 6 | YC8-F100200 | Clamping extension kit Art. 140/90 | 4 | Optional |
| 7 | YC8-F100201 | Clamping extension | 1 | |
| 8 | YC8-F100202 | Short clamp | 1 | |
| 9 | YC8-F100203 | Long clamp | 1 | |
| 10 | YC8-F100105 | Special screw | 2 | |
| 11 | 0201148 | Screw M12X40 - GB/T5783 | 1 | |
| 12 | YC8-F100100 | Clamp protection kit Art. 137/90 | 4 | Optional |
| 13 | YC8-F100101 | Clamp protection | 1 | |
| 14 | YC8-F100102 | Plastic insert 1 | 1 | |
| 15 | YC8-F100103 | Plastic insert 2 | 1 | |
| 16 | YC8-F100104 | Plastic insert 3 | 1 | |
| 17 | 0511040 | Short tire lever 24" | 1 | |
| 18 | DB-12T | Long bead lifting lever | 1 | |
| 19 | 0511009 | Tire ring lifting lever Art. 148/90 | 1 | Optional |
| 20 | C91A000000 | Tubeless roller | 1 | Optional |
| 21 | C91A000001 | Shaft | 1 | |
| 22 | C91A000002 | Spacer | 2 | |
| 23 | C91A100000 | Roller | 1 | |
| 24 | 0214038 | Bearing 30212 | 2 | |
| 25 | C91A000003 | Screw M45X1.5 | 1 | |
| 26 | C91C000000A | Tubeless roller for aluminum rim | 1 | Optional |
| 27 | C91C000001 | Shaft | 1 | |

| | | |
|--|--------------------|------------------|
| | ACCESSORIES | ED. 12/13 |
|--|--------------------|------------------|

| | | | |
|----|------------|---------------------------|---|
| 28 | C61A400004 | Spacer | 1 |
| 29 | C61A400002 | Round roller | 1 |
| 30 | C61A400005 | Spacer | 2 |
| 31 | 0210077 | Self-lubricated bush 5050 | 2 |
| 32 | C61A400003 | Conical roller | 1 |
| 33 | 0204046 | Nut M45X1.5 - GB/T812 | 1 |