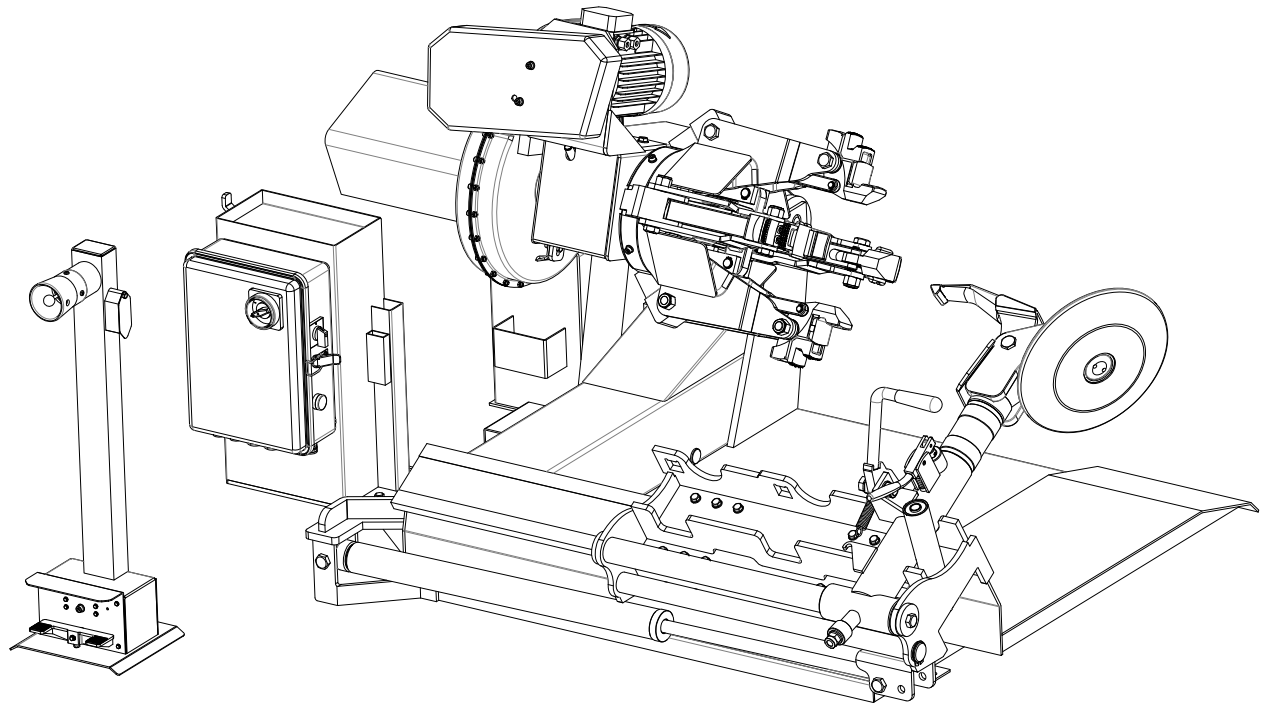
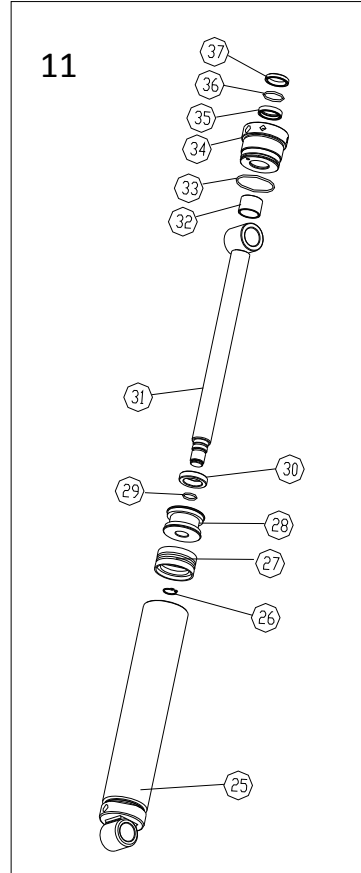
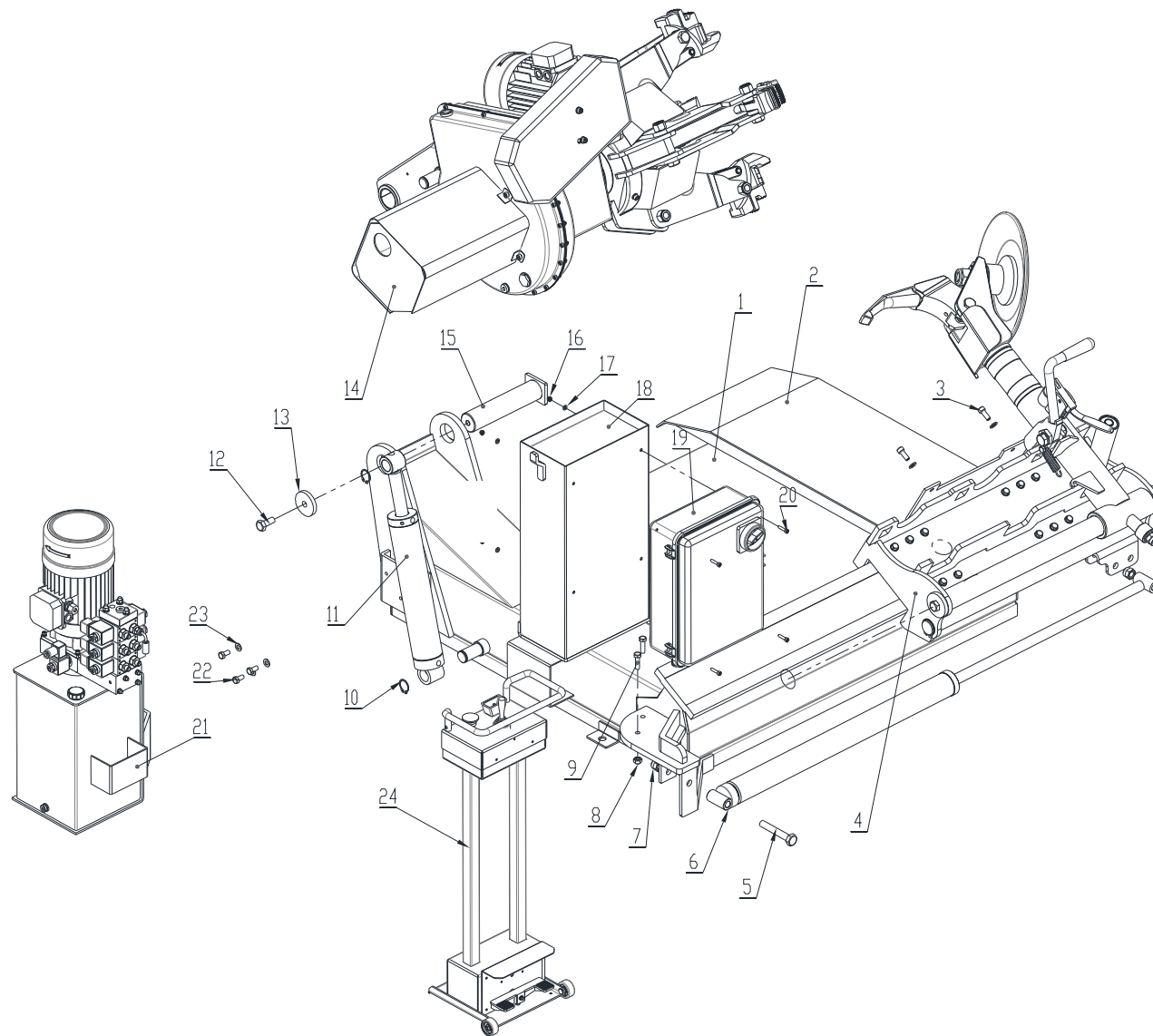


ED. 01/2015

PART CATALOGUE
STD-330
TIRE CHANGER





TAV.0	GENERAL ASSEMBLY	ED. 01/15
-------	------------------	-----------

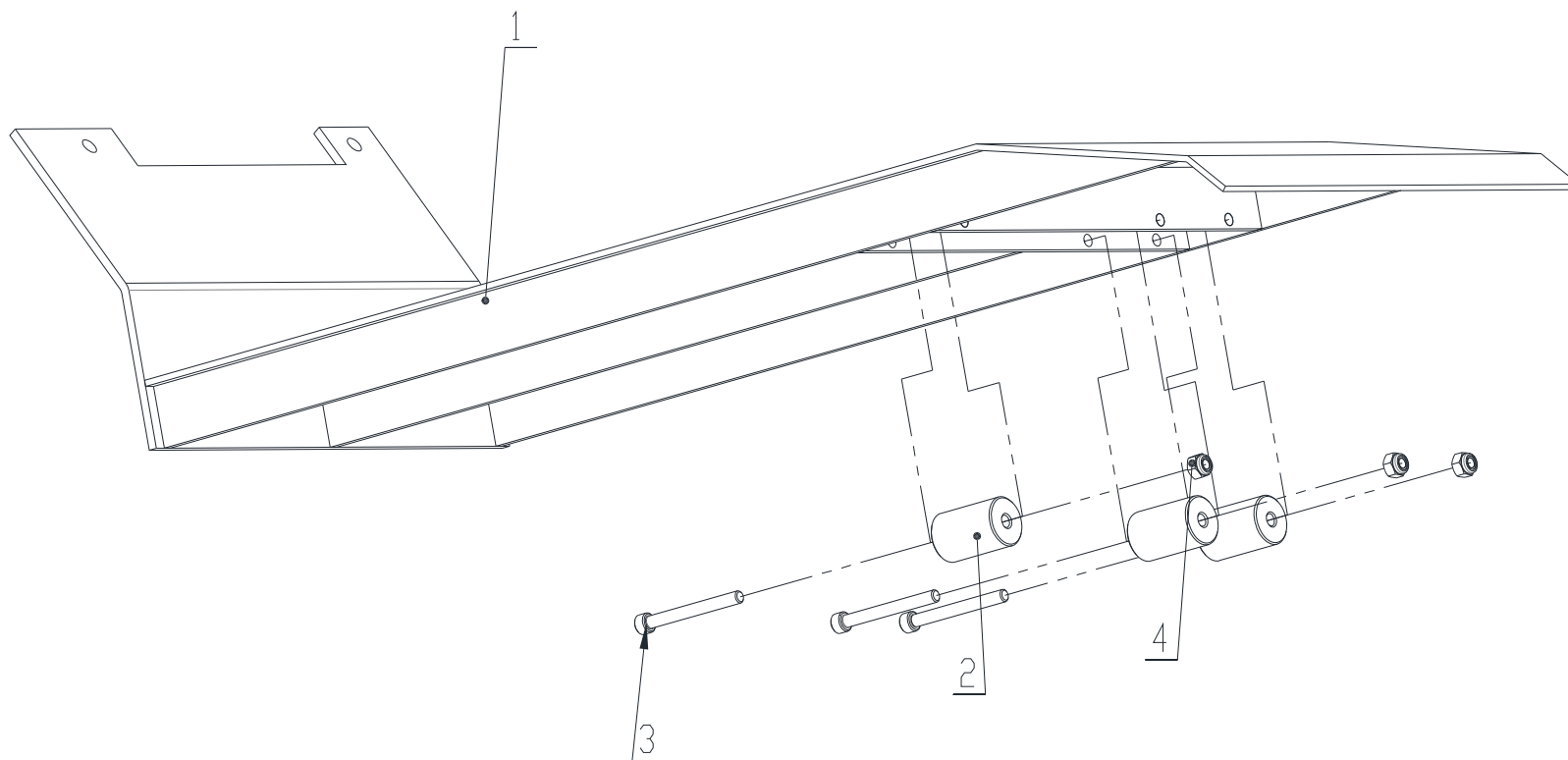
ITEM	PART NO.	DESCRIPTION	QTY	REMARK
1	C53A100000	Frame	1	
2	CC-702000	Ramp assembly	1	
3	0202061	Screw M10X25 - GB/T70.1	2	
4	CC-201000	Carriage and tools	1	
5	0201101	Screw M16X100 - GB/T5782	2	
6	330-50-0	Carriage cylinder	1	
7	0204008	Nut M16 - GB/T889.1	2	
8	0204005	Nut M10 - GB/T889.1	2	
9	0201050	Screw M10X35 - GB/T5783	2	
10	0212021	Seeger D.30 - GB/T 894.1	2	
11	C-2C120-63-0	Arm cylinder	1	
12	0201093	Screw M14X35 - GB/T5781	1	
13	CC-201009	Washer	1	
14	C53A500000	Self-centering chuck	1	
15	CC-380100	Bead breaking arm pin	1	
16	0204003	Nut M6 - GB/T889.1	4	
17	0205006	Washer D6 - GB/T97.1	4	
18	C53A700000	Accessory box	1	
19	C61AD11000	Electric unit	1	
20	0202034	Screw M6X25 - GB/T70.1	4	
21	330-BZ-0	Hydraulic unit	1	
22	0201062	Screw M10X20 - GB/T5783	3	
23	0205011	Washer D10 - GB/T97.1	7	
24	C53AD12000	Pedal control	1	
25	C-2C120-63-10	Cylinder liner	1	
26	0212005	Seeger D.20 - GB/T 894.1	1	
27	0312012	Gasket 63X47	1	

TAV.0

GENERAL ASSEMBLY

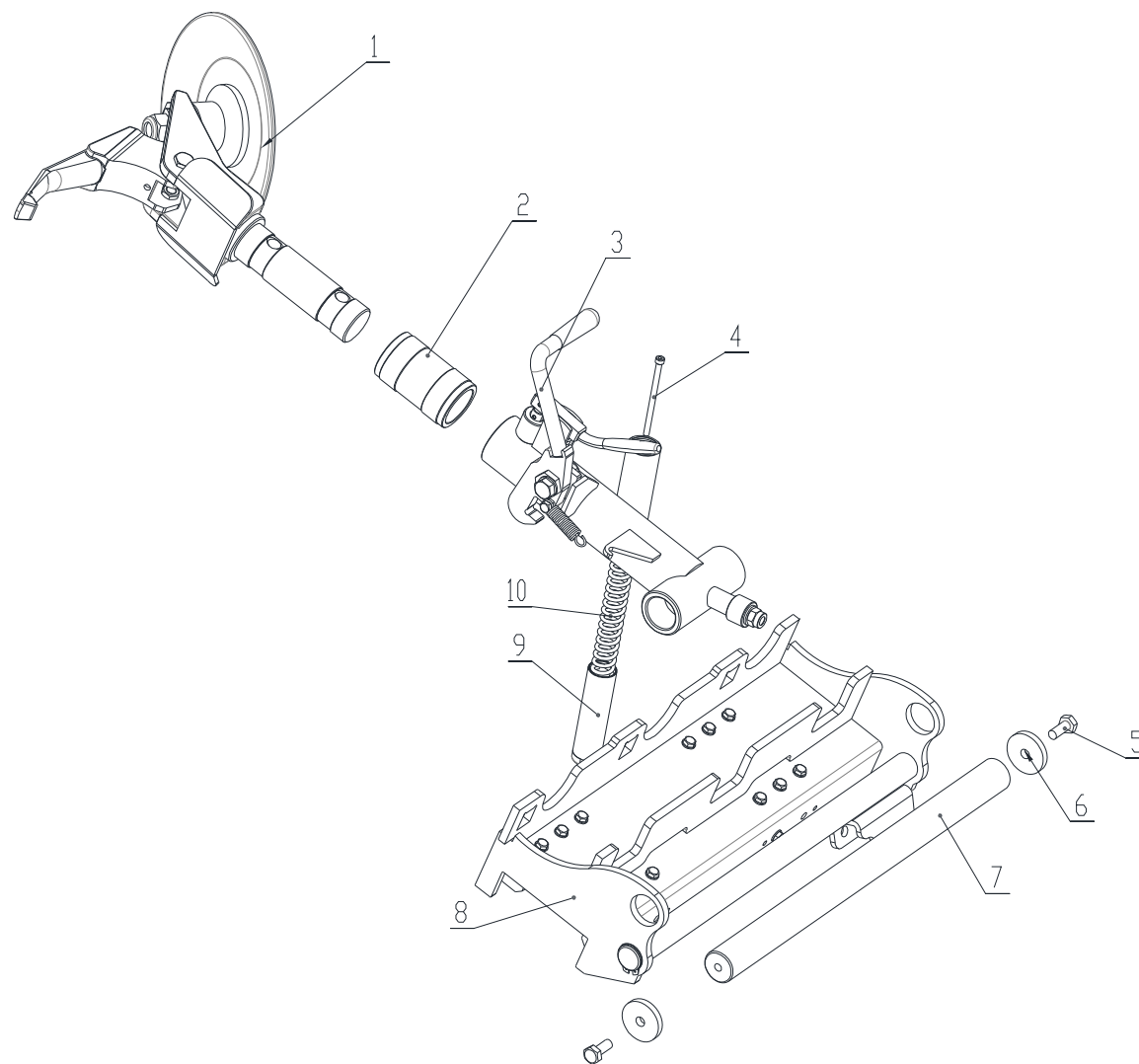
ED. 01/15

ITEM	PART NO.	DESCRIPTION	QTY	REMARK
28	C-2C120-63-3	Piston	1	
29	0309022	O-ring 24X3.1 - GB1235	1	
30	330-63-6	Spacer	1	
31	C-2C120-63-4	Cylinder shaft	1	
32	0305006	Guide ring 30X25X2.5 - GB/T15242.2	1	
33	0309035	O-ring 63X3.1 - GB1235	1	
34	C-2C120-63-5	Cylinder guide cover	1	
35	0310009	Sealing ring 30X38X7	1	
36	0309027	O-ring 35X3.1 - GB1235	1	
37	0311005	Scraper D.30	1	



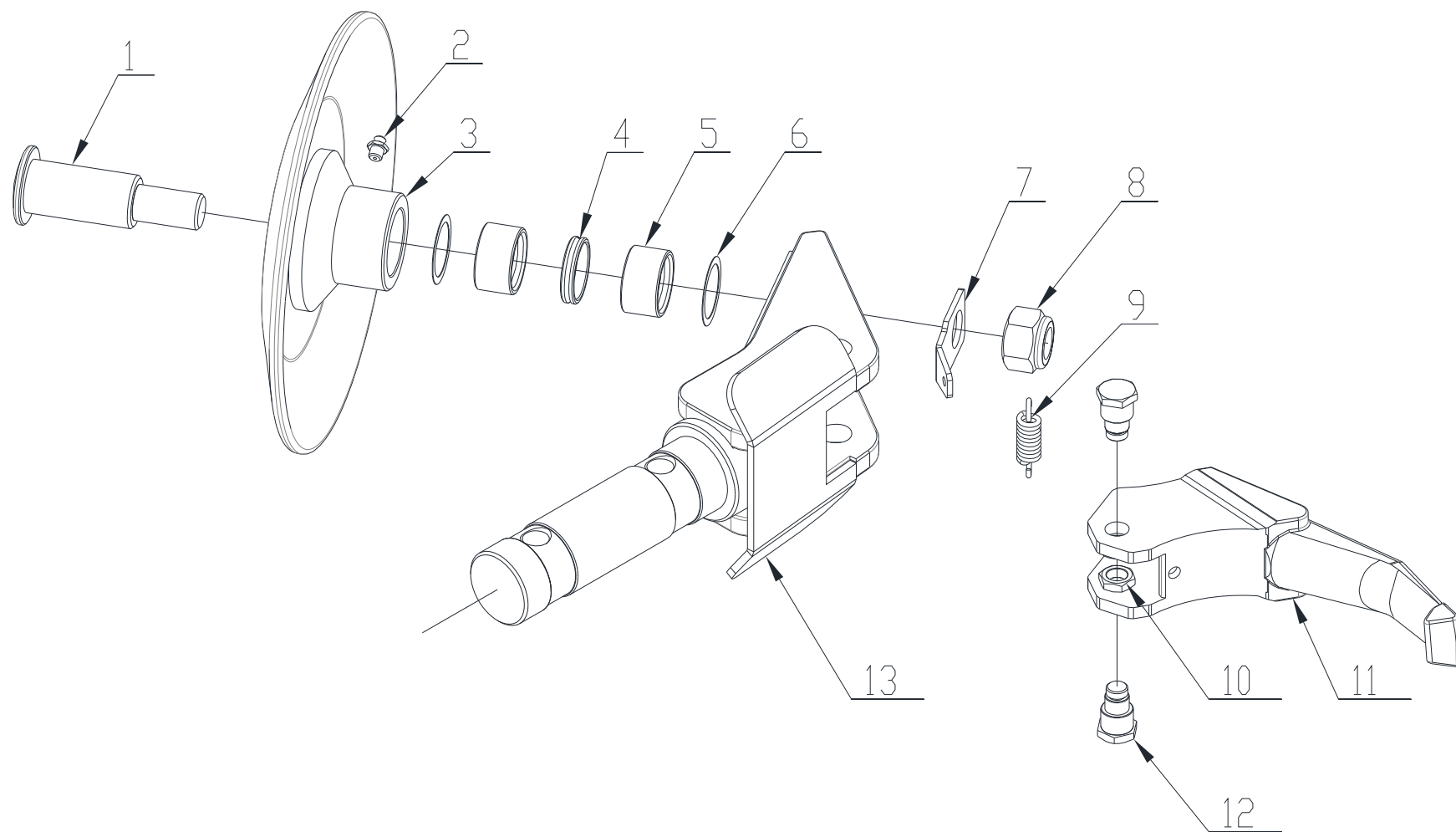
TAV.2.0	RAMP ASSEMBLY	ED. 01/15
---------	---------------	-----------

ITEM	PART NO.	DESCRIPTION	QTY	REMARK
1	CC-700100	Ramp	1	
2	CC-701001	Nylon wheel	3	
3	0202054	Screw M8X75 - GB/T70.1	3	
4	0204004	Self-locking Nut M8 - GB/T889.1	3	



TAV.4.0	CARRIAGE AND TOOLS	ED. 01/15
---------	--------------------	-----------

ITEM	PART NO.	DESCRIPTION	QTY	REMARK
1	YC8-2001100A	Double tool	1	
2	CC-610005A	Spacer	1	
3	CC-610000Y	Tool arm	1	
4	0202039	Screw M8X130 - GB/T70.1	1	
5	0201093	Screw M14X25 - GB/T5781	2	
6	CC-201009	Washer	2	
7	CC-201008	shaft	1	
8	CC-201000A	Carriage	1	
9	YC8-2400984	Expeller	1	
10	YC8-3001038	Spring	1	

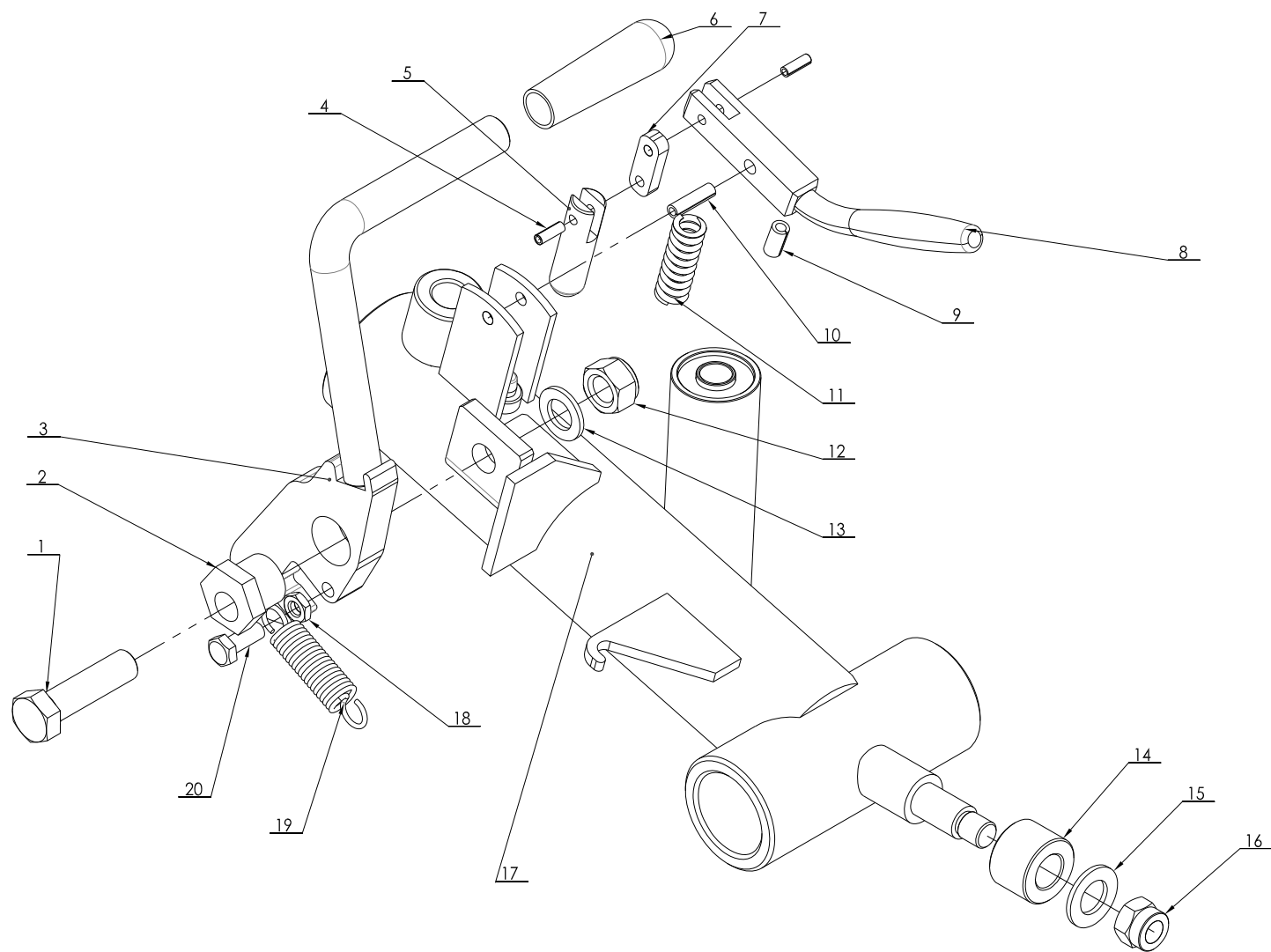


TAV.4.1

DOUBLE TOOL

ED. 01/15

ITEM	PART NO.	DESCRIPTION	QTY	REMARK
1	CC-620001	Pin	1	
2	0215020	Greaser 10X1	1	
3	C56B422000	Bead breaking disk	1	
4	CC-620003	Spacer	1	
5	CC-620002	Bead breaking disk bush	2	
6	YC8-4396915	Spacer	2	
7	C56B420001	Spring connection plate	1	
8	0204011	Nut M27 - GB/T889.1/M27	1	
9	CC-620005	Spring	1	
10	0204014	Nut M16 - GB/T6173	2	
11	C56B423000	Long tool	1	
12	YC8-3010837	Pin	2	
13	YC8-2410832A	Tool support	1	

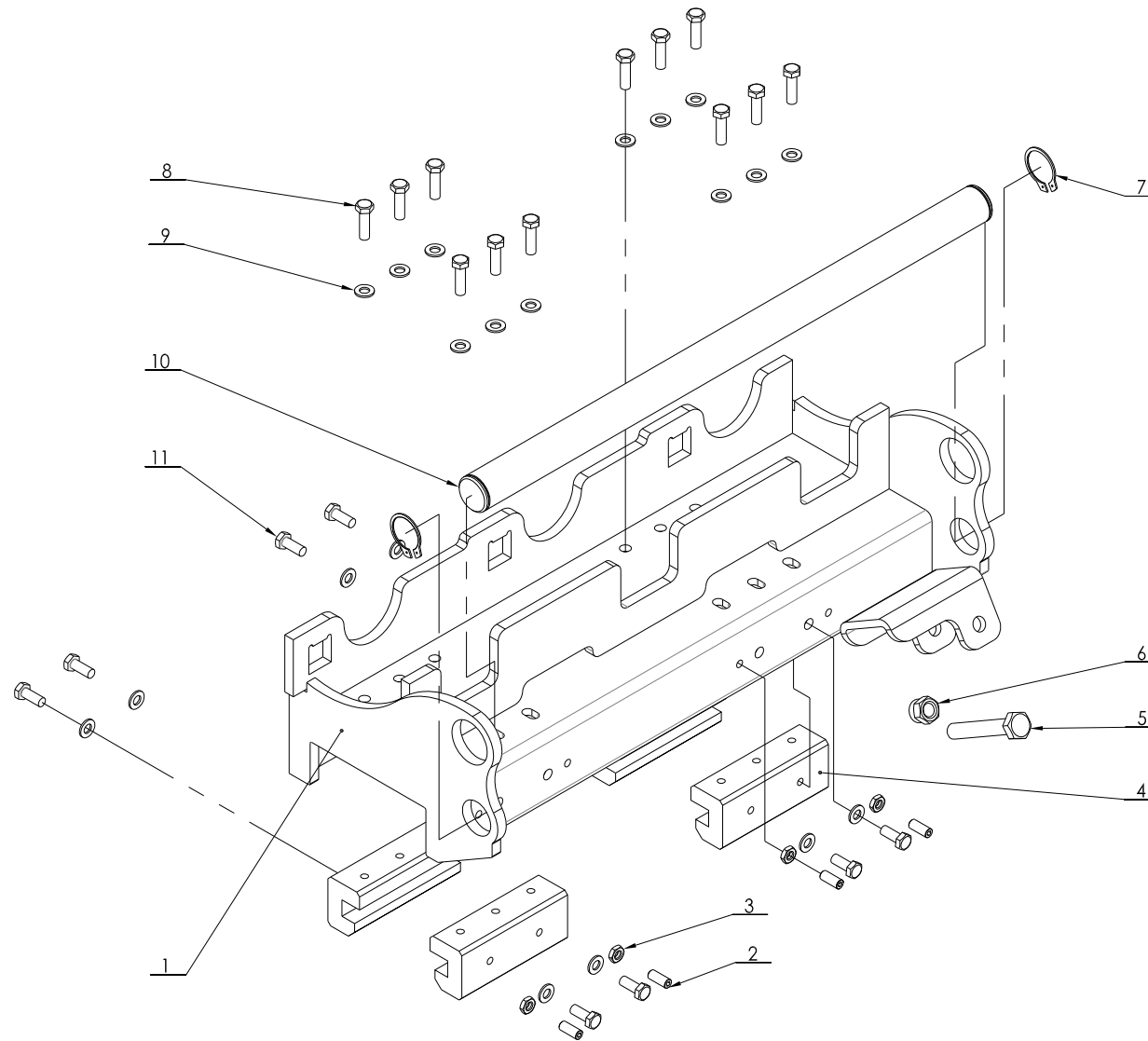


TAV.4.3

TOOL ARM

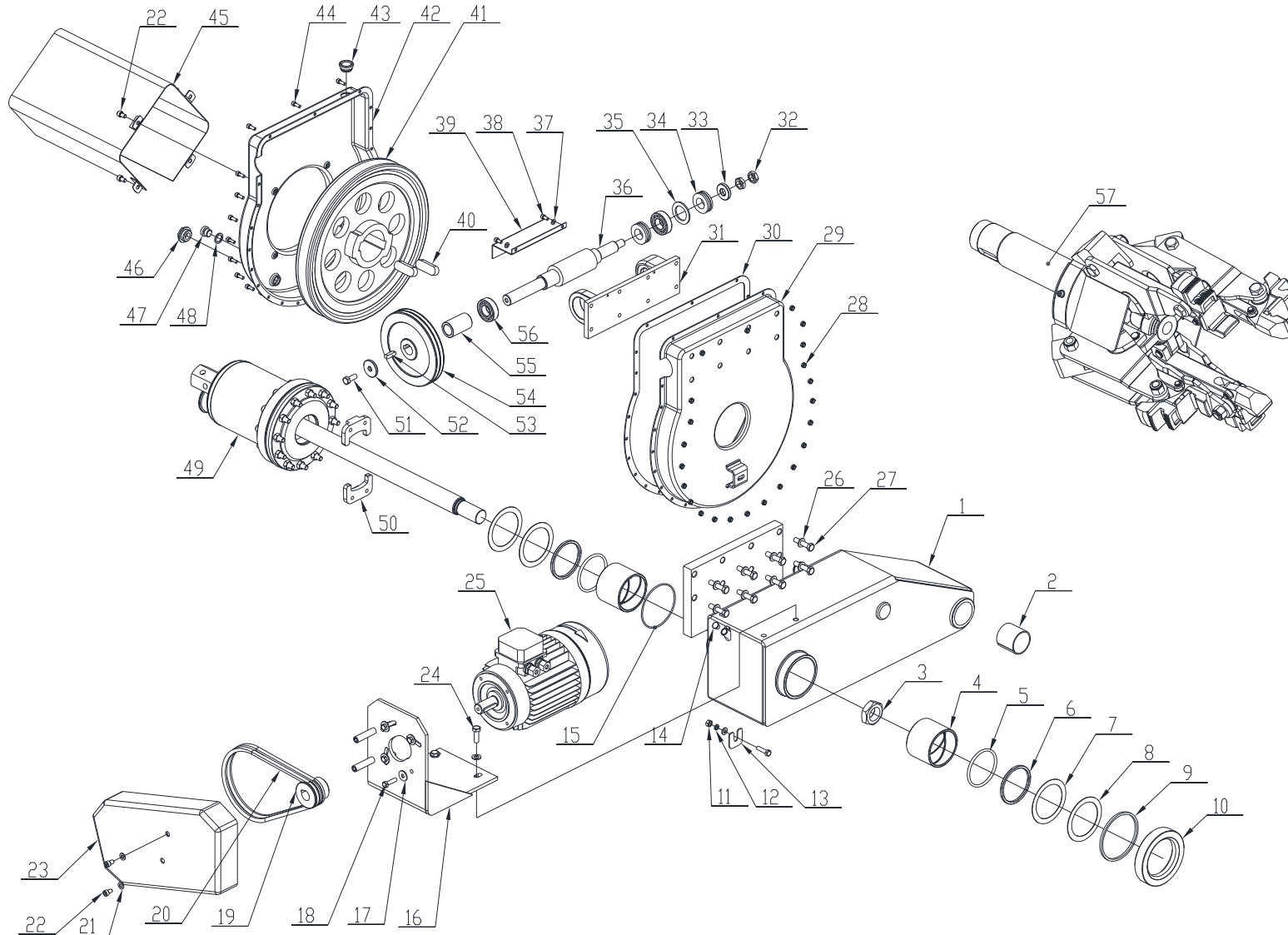
ED. 01/15

ITEM	PART NO.	DESCRIPTION	QTY	REMARK
1	0201128	Screw M18X65 - GB/T5783	1	
2	CC-610001	Cam	1	
3	CC-610200	Hook	1	
4	0213005	Elastic pin 6X18- GB/T879.1	2	
5	YC8-3001029	Sliding bolt	1	
6	0511007	PVC handle	1	
7	YC8-3001028	Connection rod	1	
8	YC8-3001030b	Lever	1	
9	0213001	Elastic pin 10X20 - GB/T879.1	1	
10	0213007	Elastic pin 8X30 - GB/T879.1	1	
11	YC8-3001040	Spring	1	
12	0204009	Nut M18 - GB/T889.1	1	
13	0205021	Washer D.18 - GB/T97.1	1	
14	CC-610003	Roller	1	
15	0205022	Washer D.20 - GB/T97.1	1	
16	0204008	Nut M16 - GB/T889.1	1	
17	CC-610100Y	Tool arm	1	
18	0204012	Nut M10 - GB/T6172.1	1	
19	CC-610002	Bead breaking arm spring	1	
20	0201064	Screw M10X25 - GB/T5783	1	



TAV.4.8	CARRIAGE	ED. 01/15
---------	----------	-----------

ITEM	PART NO.	DESCRIPTION	QTY	REMARK
1	CC-200100A	Carriage A	1	
2	0209036	Screw M10X25 - GB/T77	4	
3	0204012	Nut M10 - GB/T6172.1	4	
4	CC-201010	Carriage slide	4	
5	0201101	Screw M16X100 - GB/T5782	1	
6	0204008	Nut M16 - GB/T889.1	1	
7	0212008	Seeger D.40 - GB/T894.1	2	
8	0201050	Screw M10X35 - GB/T5783	12	
9	0205011	Washer D.10 - GB/T97.1	20	
10	CC-201007	Tool arm shaft	1	
11	0201064	Screw M10X25 - GB/T5783	8	



TAV.14.0

SELF-CENTERING CHUCK

ED. 01/15

ITEM	PART NO.	DESCRIPTION	QTY	REMARK
1	C53A511000	Chuck arm	1	
2	0210035	Lubricated bush 5050	2	
3	0204019	Nut M33X2 - GB/T6173	1	
4	YC8-3001041	Bush for chuck rod	2	
5	0309044	O-ring 90X5.7- GB1235	2	
6	YC8-4299308	Steel ring	2	
7	YC8-3001056	Spacer	2	
8	YC8-3001057	Self-lubricated washer	2	
9	0511119	Felt 115X106X5	1	
10	YC8-3001738	Ring for felt	1	
11	0203029	Nut M8- GB/T6170	1	
12	0208006	Washer D.8	1	
13	C53A500001	Spacer	1	
14	0606064	Under cap	1	
15	0309006	O-ring 105X3.1- GB1235	1	
16	C53A531000	Motor support	1	
17	0205009	Washer D.8 - GB/96	4	
18	0201031	Screw M8X30 - GB/T5783	5	
19	YC8-3000975	Motor pulley	1	
20	0511157	Driven belt SPZ 750	1	
21	0205008	Washer D.8 - GB/T97.1	3	
22	0202043	Screw M8X12 - GB/T70.1	6	
23	YC8-2400943	Belt casing	1	
24	0201049	Screw M10X30 - GB/T5783	4	
25a	0509064	Double speed motor 1.3KW/1.8KW 380V/50HZ/3PH	1	
25b	0509045	Double speed motor 1.3KW/1.8KW 400V/50HZ/3PH	1	
25c	0509029	Double speed motor 1.3KW/1.8KW 220V/60HZ/3PH	1	

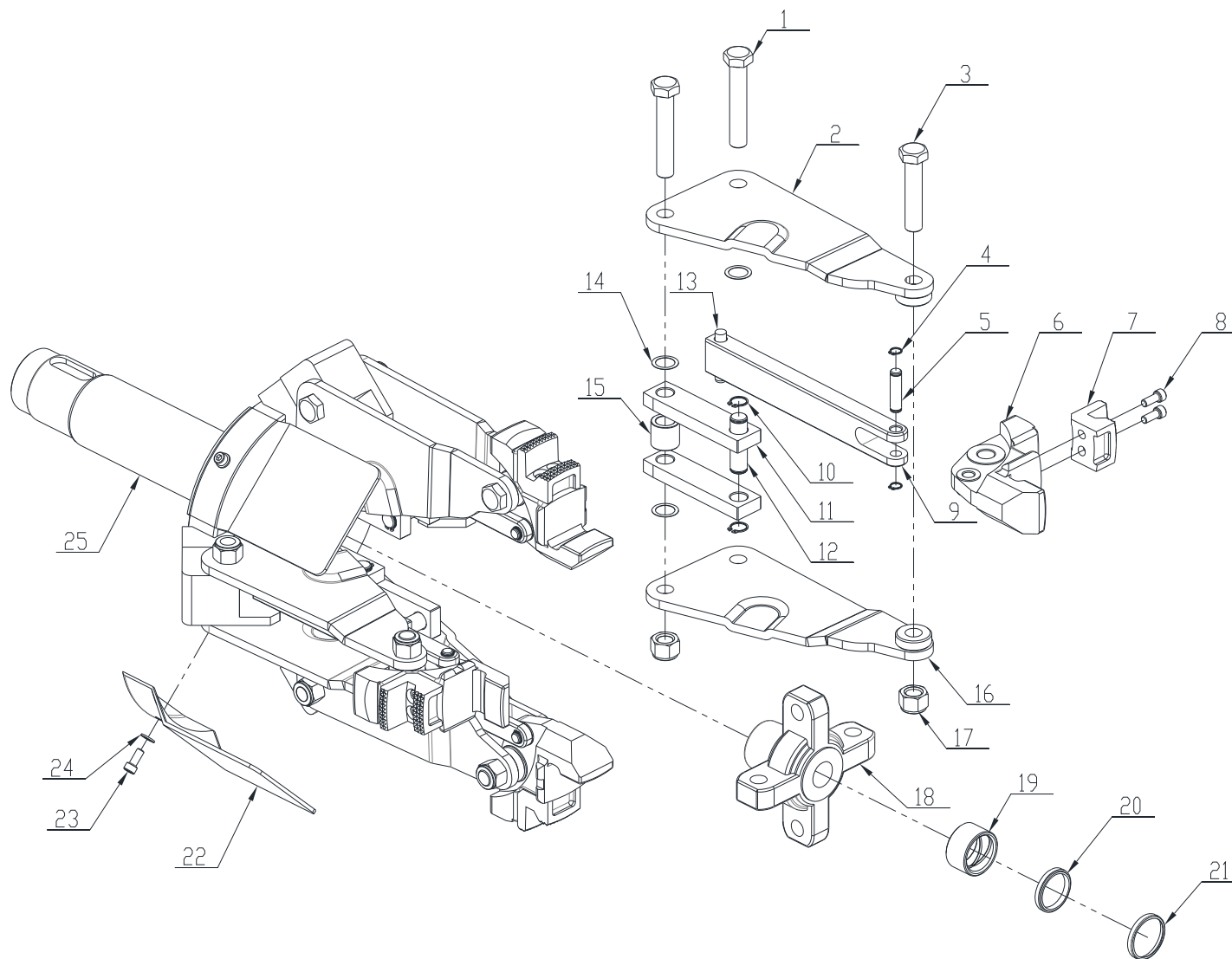
26	0205011	Washer D.10 - GB/T97.1	12
27	0201051	Screw M10X45 - GB/T5782	8
28	0204003	Nut M6 - GB/T889.1	23
29	YC8-2400995	Cover	1
30	YC8-3001051	Gasket	1
31	YC8-2401009	Support	1
32	0204014	Nut M16X1.5 - GB/T6173	2
33	YC8-3001114	Washer	1
34	0214009	Bearing 51205 - GB/T301	2
35	YC8-3001115	Spacer	1
36	YC8-3010861b	Worm screw	1
37	0205006	Washer D.6 - GB/97.1	2
38	0202024	Screw M6X12 - GB/T70.1	2
39	YC8-3001010	Oil screen	1
40	0213029	Tab 20X60 - GB/T1096	2
41	YC8-3010838A	Helical gear	1
42	YC8-3000998	Cover	1
43	YC8-4199258	Oil plug	1
44	0202032	Screw M6X16 - GB/T70.1	23
45	YC8-6609764	Pivot union cover	1
46	0215024	Oil level indicator M27X1.5 - GB1160.2	1
47	0305018	Oil plug G3/8	1
48	0313012	Washer G3/8	1
49	C53AY10000	Chuck cylinder	1
50	YC8-3008803	Wheel locking plate	2
51	0201078	Screw M10X25 - GB/T5783	1
52	YC8-3001068	Washer	1

TAV.14.0

SELF-CENTERING TRUCK

ED. 01/15

53	0213025	Tab 8X30 - GB/T1096	1
54	YC8-3001052b	Driven pulley	1
55	YC8-3000999a	Spacer	1
56	0214019	Bearing 6205 - GB/T276	2
57	C53A520000	Chuck	1

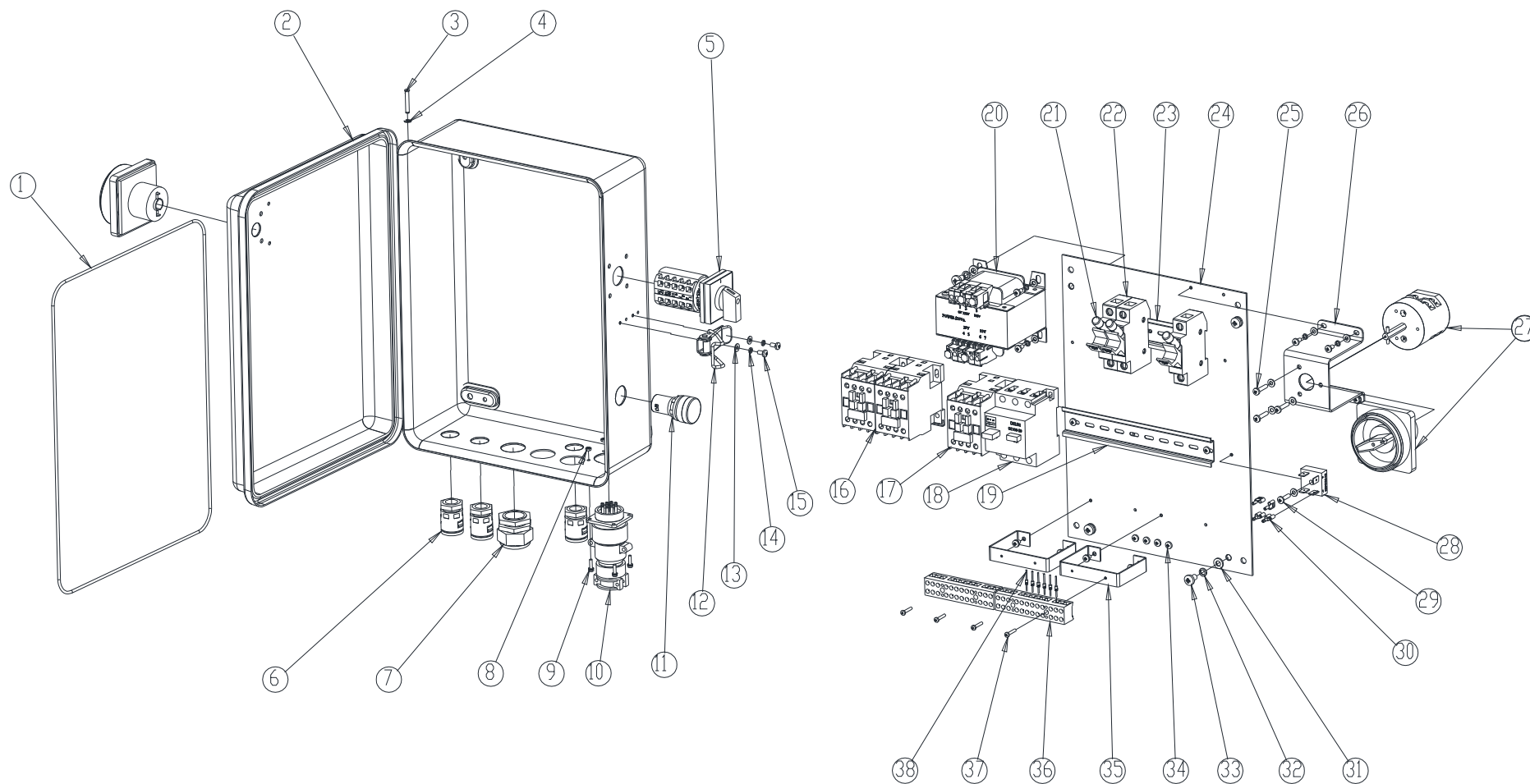


TAV.14.57

CHUCK

ED. 01/15

ITEM	PART NO.	DESCRIPTION	QTY	REMARK
1	0201105	Screw M18X1.5X100 - GB/T5785	8	
2	C53A521000	Chuck left arm	4	
3	0201107	Screw M18X1.5X85 - GB/T5785	4	
4	0212001	Seeger D.12 - GB/T894.1	8	
5	C53A520003	Shaft	4	
6	YC8-3000924	Clamp support	4	
7	CC-510101	Clamp	4	
8	0202045	Screw M8X20 - GB/T70.1	8	
9	C53A520001	Bar	4	
10	0212016	Seeger D.18 - GB/T894.1	8	
11	YC8-3001044a	Connection rod	8	
12	YC8-3000993	Pin	4	
13	0213039	Elastic pin 12X60 - GB/T119.1	4	
14	YC8-4399974	Copper washer	11	
15	YC8-3000994	Spacer	4	
16	C53A522000	Chuck right arm	4	
17	0204010	Nut M18X1.5 - GB/T6184	12	
18	C53A520002	Turntable cross	1	
19	YC8-3010893A	Bush for chuck rod	1	
20	0311008	Scraper D.40	1	
21	YC8-4299309	Steel ring for scraper	1	
22	YC8-3005740A	Chuck protection	4	
23	0202104	Screw M8X18 - GB/T70.1	4	
24	0205008	Washer D.8 - GB/T97.1	4	
25	C53A523000	Chuck turntable	1	



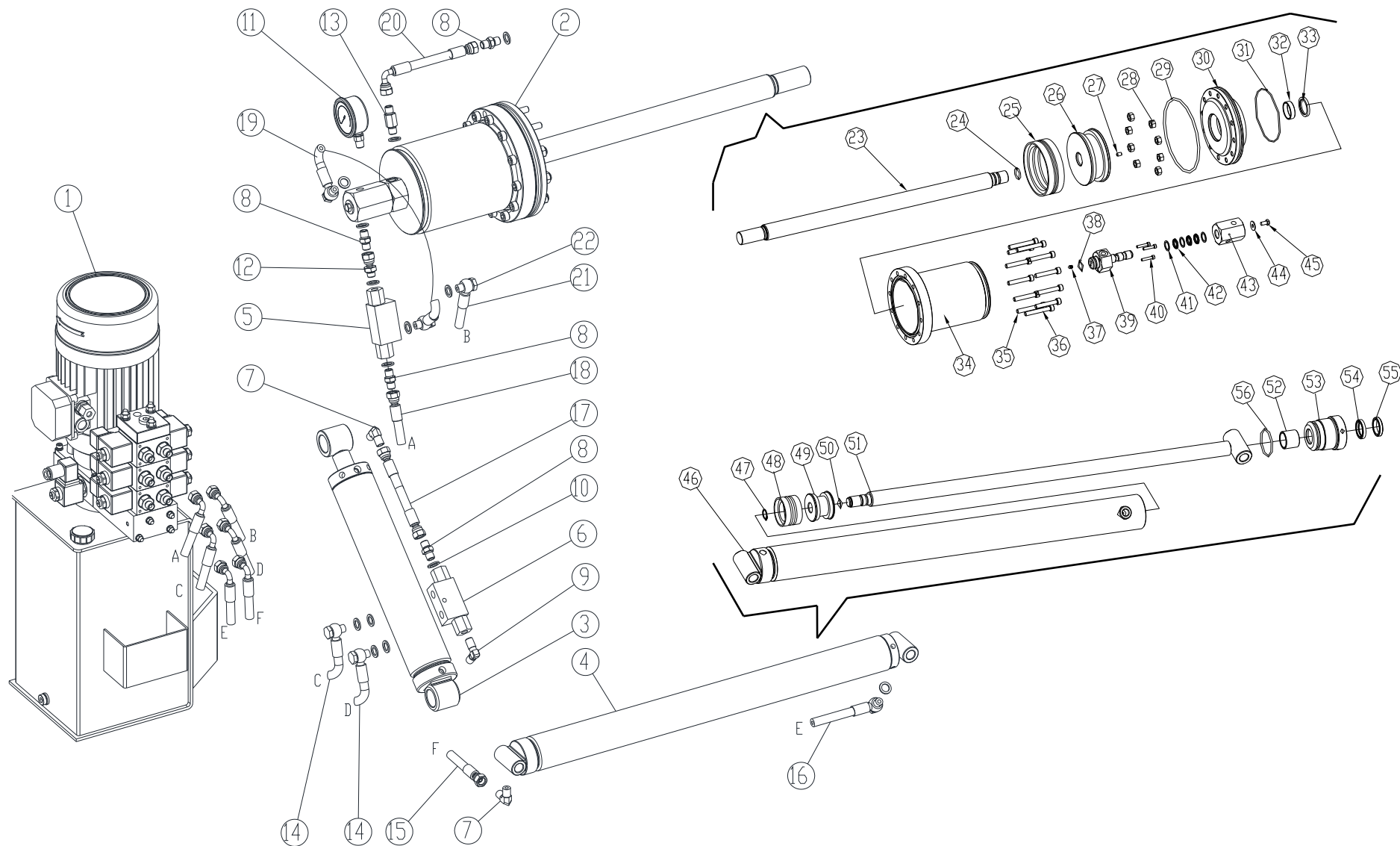
TAV.19

ELECTRIC UNIT

ED. 01/15

ITEM	PART NO.	DESCRIPTION	QTY	REMARK
1	0511026	Gasket	1	
2	C61AD11100	Casing	1	
3	S551-6	Pin	2	
4	0211001	Seeger D.3.5 - GB/T896	2	
5	0505013	Pole change switch 20A	1	
6	0508303	Conduit connector M20-D18.5	3	
7	0508012	Cable relief M27	1	
8	0203001	Nut M3 - GB52	4	
9	0206055	Screw M3X12 - GB/T9074.4	4	
10	0508280	Cable connector P32-14	1	
11	0502023	Pilot lamp AC24V	1	
12	0511169	Hook 5113B	1	
13	0205002	Washer D.4 - GB/T97.1	13	
14	0208002	Washer D.4 - GB/T93	9	
15	0206023	Screw M4X8 - GB/T818	9	
16	0501054	Contacto CJX2-1801 AC24V	2	
17	0501002	Contacto CJX2-1210 AC24V	1	
18	0501020	Circuit breaker DZ108-20/11(6.3-10A)	1	
19	0508330	Guide DZ47-200	1	
20a	0503067	Transformer 115VA /230V/400V	1	
20b	0503010	Transformer 115VA /220V/380V	1	
21	0504009	Overload cutoff 16A 10X38	3	
22	0504001	Fuse holder	3	
23	0508330	Guide DZ47-60	1	
24	C61AD11301	Support	1	
25	0206016	Screw M4X20	3	
26	C61AD11302	Switch support	1	

27	0505025	Power switch 20A	1
28	0508006	Rectifier KBPC3510	1
29	0206015	Screw M4X16 - GB/T818	1
30	0508305	connector	4
31	0205006	Washer D.6 - GB/T97.1	4
32	0208005	Locking washer D.6 - GB/T93	4
33	0206031	Screw M6X10 - GB/T818	4
34	0206019	Screw M4X6 - GB/T818	12
35	CC-850223	Support	2
36	0507009	Terminal board H3081-12	2
37	0206002	Screw M3X16 - GB/T818	4
38	0508323	LED IN5408	6



TAV.21.0

HYDRAULIC UNIT

ED. 01/15

ITEM	PART NO.	DESCRIPTION	QTY	REMARK
1	330-BZ-0	Power unit	1	
2	330-140-0	Chuck cylinder	1	
3	330-63-0	Arm Cylinder	1	
4	330-50-0	Carriage cylinder	1	
5	0307020	Stop valve BP17000000	1	
6	0307042	Stop valve BP25000000	1	
7	0303002	90° union 1BT9-04SP	2	
8	0303065	Union 1B-04	4	
9	0303031	90° union 1T9-04SP	1	
10	0313001	Washer BS/A13.70	18	
11	0305056	Pressure gauge LA-60X250	1	
12	0303042	Union 2B-04	1	
13	0303062	Union 1B-04-T2	1	
14	WJ800	Hydraulic hose L=800	2	
15	ZW1450	Hydraulic hose L=1450	1	
16	WJ1960	Hydraulic hose L=1960	1	
17	ZZ200	Hydraulic hose L=200	1	
18	ZW760	Hydraulic hose L=760	1	
19	JJ430	Hydraulic hose L=430	1	
20	ZW170	Hydraulic hose L=170	1	
21	WJ900	Hydraulic hose L=900	1	
22	0303027	Union 720B-04	6	
23	330-140-6	Cylinder shaft	1	
24	0309025	O-ring 32X3.1	1	
25	0312008	Gasket 140X115X25.4	1	
26	YC8-140-5	Piston	1	
27	0209060	Screw M8X12 - GB/T77	1	

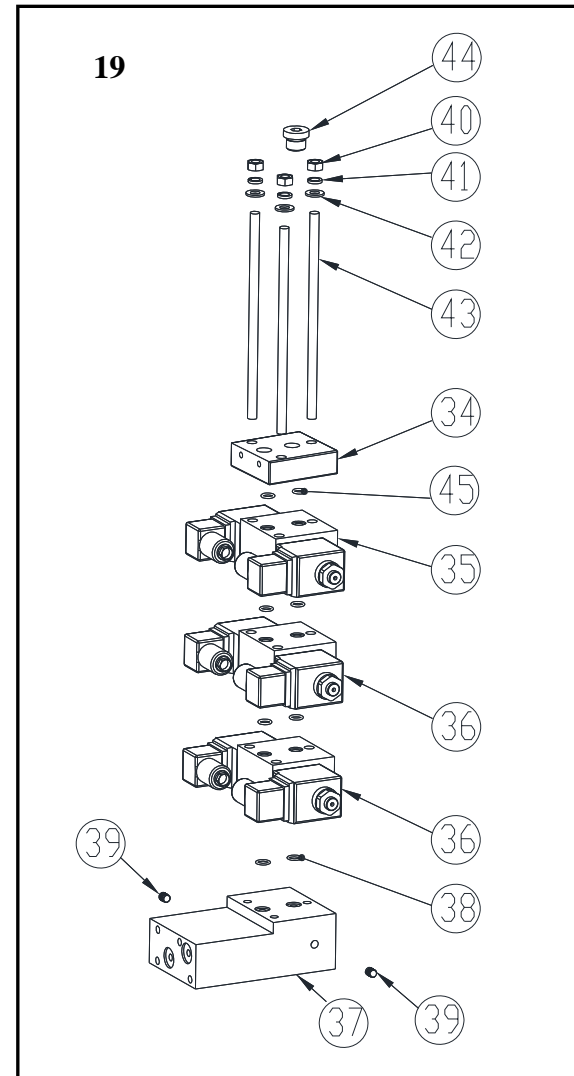
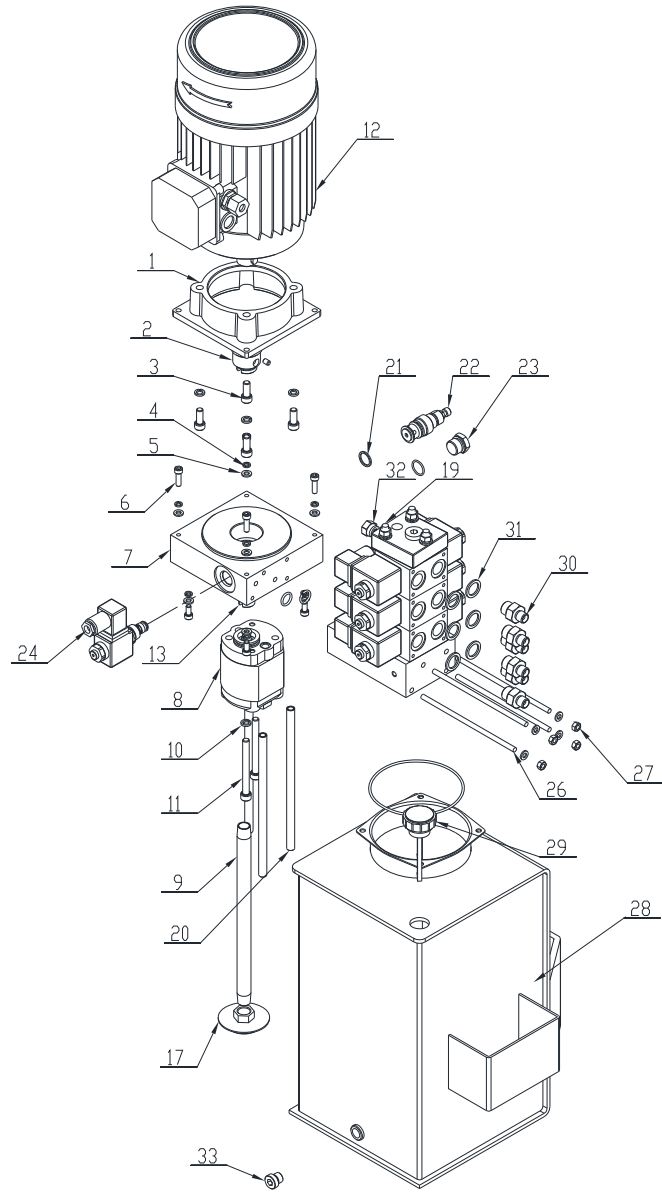
28	0203032	Nut M10 - GB/T6170	8
29	0309049	O-ring 195X5.7	1
30	YC8-140-7	Cylinder guide cover	1
31	0309046	O-ring 140X3.1	1
32	0305012	Guide ring 40X12X2.52	1
33	0310013	Sealing ring 40X50X7	1
34	YC8-140-4	Cylinder liner	1
35	0202117	Screw M10X60 - GB/T70.1	8
36	0202118	Screw M10X70 - GB/T70.1	4
37	0305001	Plug	1
38	0309025	O-ring 30X3.1	1
39	YC8-140-3	Pin	1
40	0202026	Screw M6X30 - GB/T70.1	3
41	C-2C120-85-7	Ring	3
42	0313014	Sealing ring 20X3.53	3
43	YC8-140-2	Pivot union body	1
44	0205009	Washer M8 - GB/T96	1
45	0201026	Screw M8X16 - GB/T5783	1
46	330-50-100	Cylinder liner	1
47	0212002	Seeger D.16 - GB/T 894.1	1
48	0312010	Gasket 50X34	1
49	C-2C120-50-2	Piston	1
50	0309019	O-ring 18X2.4 - GB1235	1
51	330-50-5	Cylinder shaft	1
52	0305006	Guide ring D.25X25X2.5 - GB/T15242.2	1
53	C-2C120-50-4G	Cylinder guide cover	1
54	0310008	Sealing ring 25X33X5	1

TAV.21.0

HYDRAULIC UNIT

ED. 01/15

55	0311001	Scraper D.25	1
56	0309030	O-ring 50X3.1 - GB1235	1

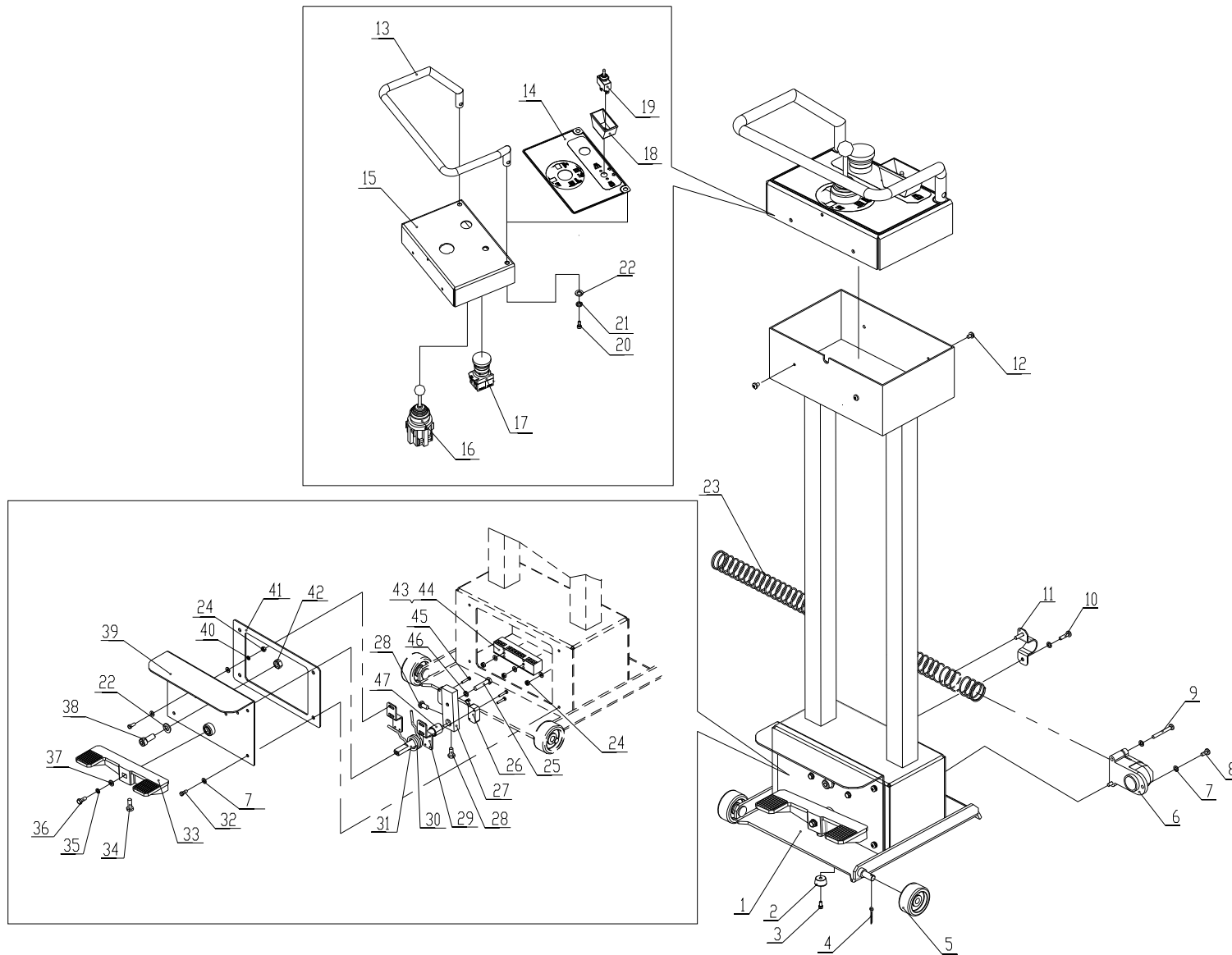


TAV.21.1	POWER UNIT	ED. 01/15
----------	------------	-----------

ITEM	PART NO.	DESCRIPTION	QTY	REMARK
1	BZ-DJ-1B	Motor flange	1	
2	BZ-ZT24	Motor joint	1	
3	0202045	Screw M8X20 - GB/T70.1	4	
4	0208005	Washer D.6 - GB/T93	8	
5	0205006	Washer D.6 - GB/T97.1	12	
6	0202033	Screw M6X20 - GB/T70.1	4	
7	BZ-ZB-V	Manifold	1	
8	0301014	Gear pump CBD-F203.3-L1BL-BA	1	
9	BZ-G18X265	Oil suction pipe	1	
10	0208006	Washer D.8 - GB/T93	6	
11	0202051	Screw M8X80 - GB/T70.1	2	
12a	0509026	Motor 1.5KW 380V/50HZ/3PH	1	
12b	0509076	Motor 1.5KW 400V/50HZ/3PH	1	
12c	0509044	Motor 1.5KW 220V/60HZ/3PH	1	
12d	0509037	Motor 1.5KW 220V/50HZ/1PH	1	
12e	0509042	Motor 1.5KW 220V/60HZ/1PH	1	
13	BZ-BJ25	Pump joint	1	
14	0209042	Screw M6X8 - GB/T80	1	
15	0309054	O-ring 17X1.8 - GB3452.1	1	
16	0309051	O-ring 112X2.65 - GB1235	1	
17	0305010	Oil filter ZG3/8	1	
18	0202024	Screw M6X12 - GB/T70.1	4	
19	W3-2+1	Multiple base with solenoid valves	1	
20	BZ-G10X210	Oil returning pipe	1	
21	0313057	Copper washer 16X20	1	
22	0307010	Max. pressure relief valve	1	
23	BZ-SD-01	Oil plug	1	

TAV.21.1	POWER UNIT	ED. 01/15
----------	------------	-----------

ITEM	PART NO.	DESCRIPTION	QTY	REMARK
24	0307098	Solenoid valve V389674A20	1	
25	0309019	O-ring 18X2.4 - GB1235	2	
26	0213032	Stud M6x160 - GB/T901	4	
27	0203004	Nut M6 - GB52	4	
28	330-BZ-1	Oil tank	1	
29	0305025	Oil level plug G3/4	1	
30	0303048	Union 1B-04-06WD	6	
31	BS-A17.20	Washer G3/8	6	
32	20491S-12-04T	90° union	1	
33	0305016	Plug G1/4	1	
34	0307108	Closing plate R933003329	1	
35	0307097	ED08Z Modular directional valve 24Vdc C161403002	1	
36	0307096	ED06Z Modular directional valve 24Vdc C161401002	2	
37	BZ-W-YC1	Interface block	1	
38	0309014	O-ring 13X1.9 - GB1235	2	
39	0305001	Oil plug ZBJ22 007-QD07	2	
40	0203029	Nut M8 - GB/T6170	3	
41	0208006	Washer D.8 - GB/T93	3	
42	0205008	Washer D.8 - GB/T97.1	3	
43	0213101	Stud M8X185 - GB/T901	3	
44	0305018	Plug G3/8	1	
45	GB3452.1	O-ring 8.5X1.80	6	



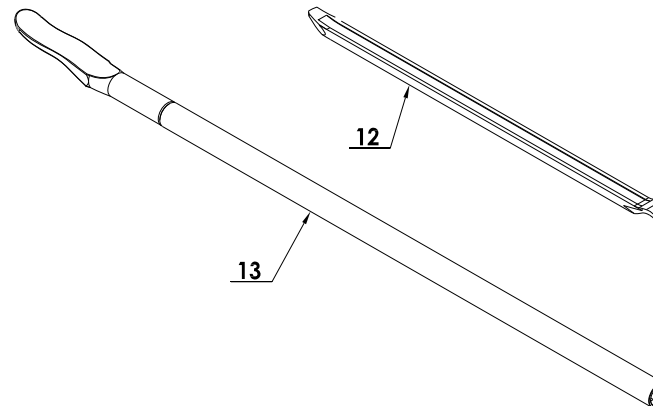
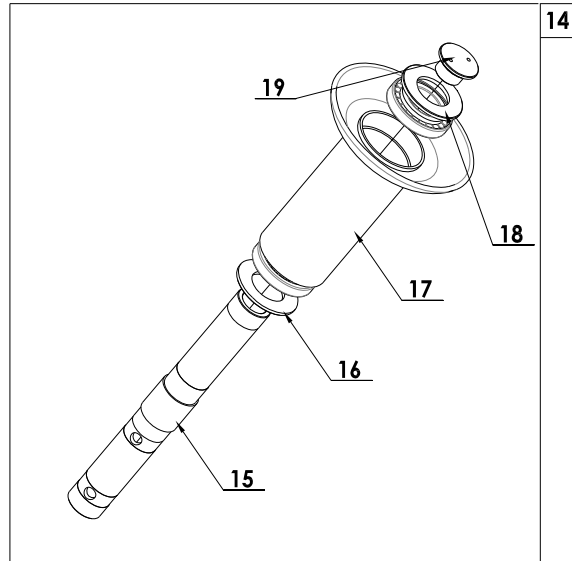
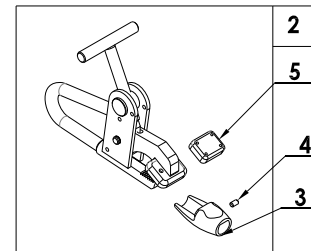
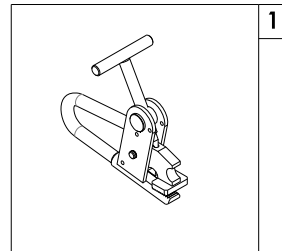
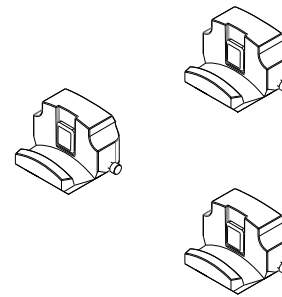
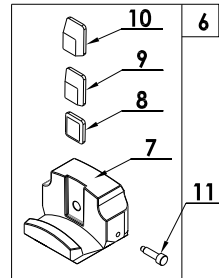
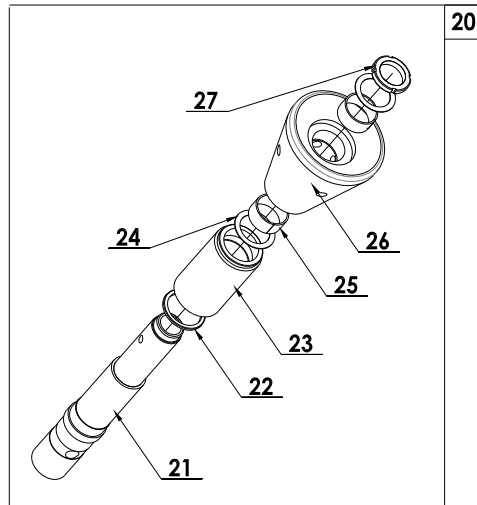
TAV.24.0	PADEL CONTROL	ED. 01/15
----------	---------------	-----------

ITEM	PART NO.	DESCRIPTION	QTY	REMARK
1	C56BD12100	Pedal unit base	1	
2	C56BD12004	Rubber foot	2	
3	0206015	Screw M5X10 - GB/T70.1	2	
4	0213044	Split pin 2X20 - GB/T91	2	
5	C56BD12001	Wheel	2	
6	YC8-3000901	Harness holder	1	
7	0205002	Washer D.4 - GB/T97.1	25	
8	0206012	Screw M4X10 - GB/T818	1	
9	0206022	Screw M4X35 - GB/T818	2	
10	0206015	Screw M4X16 - GB/T818	2	
11	YC8-3001069	U bolt	1	
12	0206019	Screw M4X6 - GB/T818	4	
13	C56BD12200	Handle	1	
14	303BD12401	Control decal	1	
15	303BD12003	Control panel	1	
16	0505010	Manipulator	1	
17	0502044	Emergency stop knob	1	
18	C56BD12002	Switch protection	1	
19	0505016	Switch123	1	
20	0202040	Screw M8X16 - GB/T70.1	2	
21	0208006	Spring washer D.8 - GB/T93	2	
22	0205008	Washer D.8 - GB/T97.1	3	
23	C56BD10001	Cable conduit	1	
24	0203002	Nut M4	8	
25	0201019	Screw M6X30 - GB/T5781	1	
26	0505014	Micro switch	2	
27	YC8-3001131	Lever	1	

28	0201010	Screw M6X12	2
29	YC8-3001143a	Switch support	2
30	YC8-3007133b	Pedal control spring	1
31	YC8-3015413	Spring support	1
32	0201001	Screw M4X10 - GB/T5782	8
33	YC8-3015412	Pedal	1
34	0201012	Screw M6X16 - GB/T5781	1
35	0208003	Spring washer D.5 - GB/T93	1
36	0201006	Screw M5X12 - GB/T5781	1
37	0205004	Washer D.5 - GB/T97.1	1
38	0202045	Screw M8X20 - GB/T70.1	1
39	YC8-2400977	Pedal box	1
40	0208002	Spring washer D.4 - GB/T93	8
41	YC8-3001138	Gasket	1
42	0203029	Nut M8 - GB/T6170	1
43	0507013	Terminal board 6	1
44	0507009	Terminal board12	1
45	0206002	Screw M3X16 - GB/T818	4
46	0208005	Spring washer D.6 - GB/T93	1
47	YC8-3001135	Spacer	1

ACCESSORIES

ED. 01/15



ACCESSORIES

ED. 12/13

ITEM	PART NO.	DESCRIPTION	QTY	REMARK
1	DB-11	Pliers	1	
2	YC8-F200000	Pliers for alloy rim Art. 138/90	1	Optional
3	YC8-F202001	Alloy protection	1	
4	0209037	Screw M6X10 - GB/T80	1	
5	YC8-F201001	Block	1	
6	YC8-F100100	Clamp protection kit Art. 137/90	4	Optional
7	YC8-F100101	Clamp protection	1	
8	YC8-F100102	Plastic insert 1	1	
9	YC8-F100103	Plastic insert 2	1	
10	YC8-F100104	Plastic insert 3	1	
11	YC8-F100105	Special screw	1	
12	0511040	Short tire lever 24"	1	
13	DB-12T	Long bead lifting lever	1	
14	C91A000000	Tubeless roller	1	Optional
15	C91A000001	Shaft	1	
16	C91A000002	Spacer	2	
17	C91A100000	Roller	1	
18	0214038	Bearing 30212	2	
19	C91A000003	Screw M45X1.5	1	
20	C91C000000A	Tubeless roller for aluminum rim	1	Optional
21	C91C000001	Shaft	1	
22	C61A400004	Spacer	1	
23	C61A400002	Round roller	1	
24	C61A400005	Spacer	2	
25	0210077	Self-lubricated bush 5050	2	
26	C61A400003	Conical roller	1	
27	0204046	Nut M45X1.5 - GB/T812	1	

