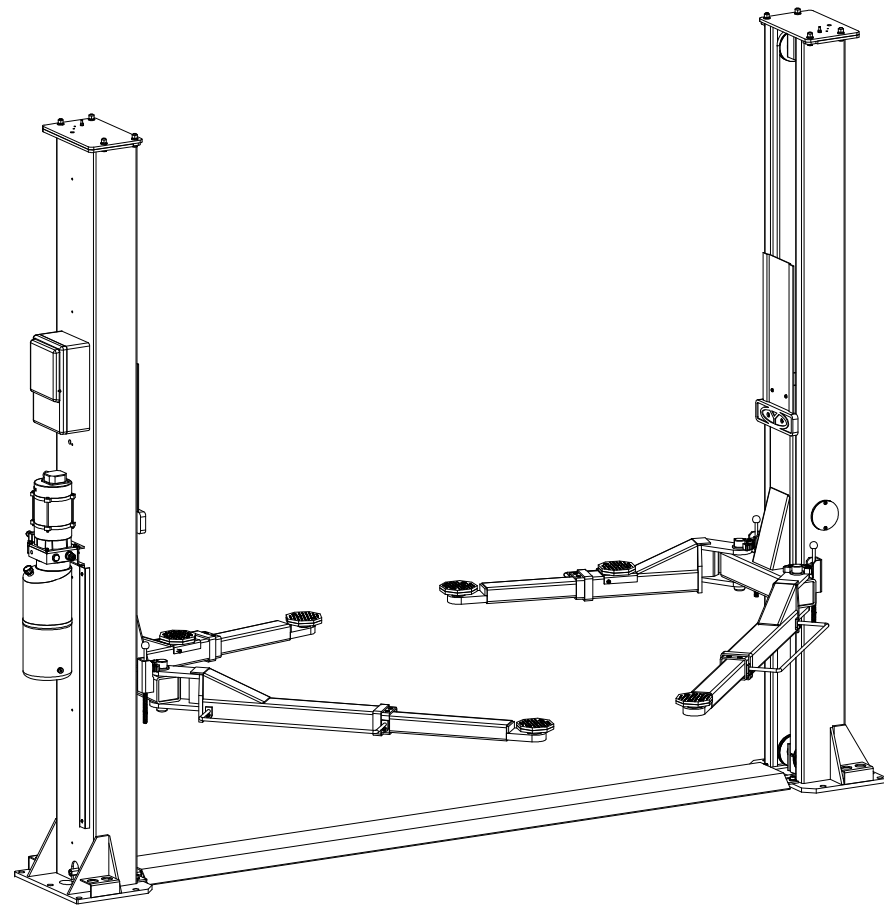
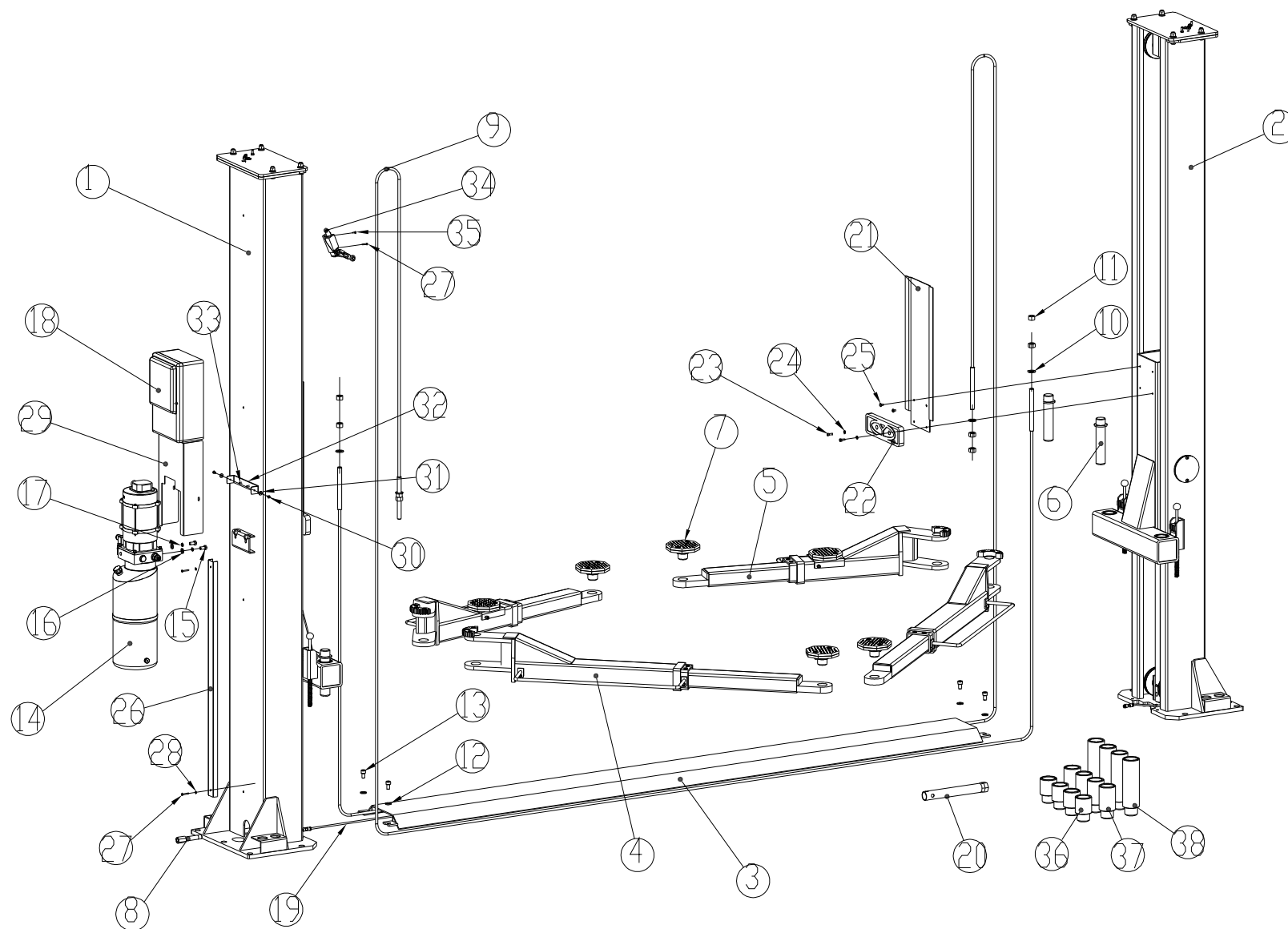


ED. 01/2017

PART CATALOGUE
STD-6140
TWO POST LIFT



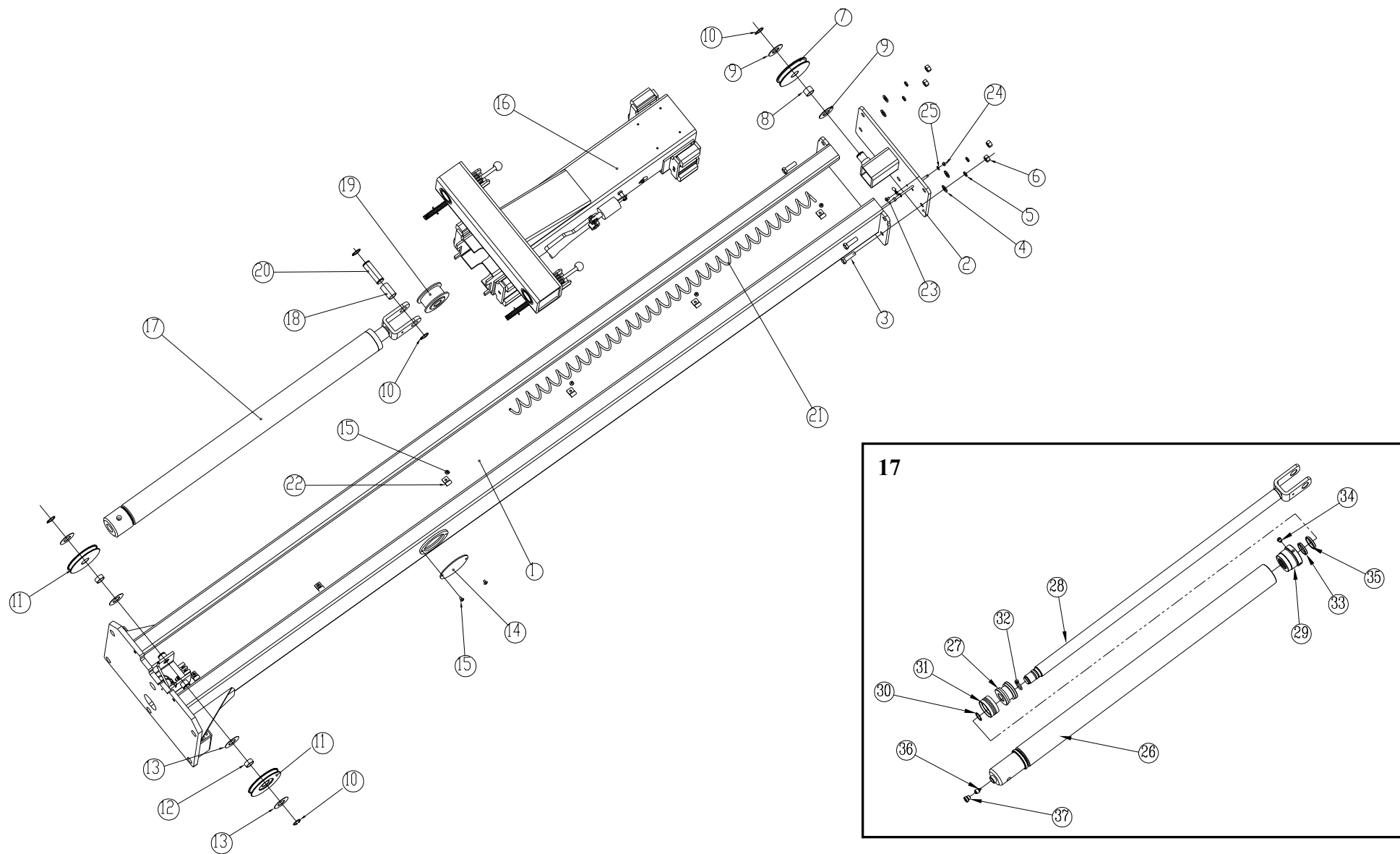


TAV.0	LIFT	ED. 01/17
-------	------	-----------

ITEM	PART NO.	DESCRIPTION	QTY	REMARK
1	XSZ-1-00D	Power-side column	1	
2	XSZ-1-00D	Off-side column	1	
3	XSZ-7-7	Base plate	1	
4	XSZ-3-00Y	Long arm	2	
5a	XSZ-3-00M	Short arm – single extension	2	
5b	XSZ-3-00S	Short arm – double extension	2	
6	XSZ-7-2	Arm shaft	4	
7	XSZ-7-3Y	Lifting adaptor	4	
8	XSZ-7-8	Cylinder union	1	
9	XSZ-7-9A	Equalizer steel cable L=8650	2	
10	0205020	Washer D.16 - GB/T97.1	4	
11	0203017	Nut M16 - GB/T6170	8	
12	0205013	Washer D.12 - GB/T97.1	4	
13	0202070	Screw M12X20 - GB/T70.1	4	
14	BZ-Y1	Hydraulic power unit	1	
15	0201062	Screw M10X20 - GB/T5781	2	
16	0208007	Spring washer D.10 - GB/T93	2	
17	0205011	Washer D.10 - GB/T97.1	2	
18	1064211000	Control panel	1	
19	0506011	Safety release electrical cable 2X1.0 L=4700	1	
20	XSZ-7-14	Equalizer cable wrench	1	
21	XSZ-8-101A	Protection plate	2	
22	XSZ-8-802-2	Rubber protection	2	
23	0202032	Screw M6X16 - GB/T70.1	4	
24	0205006	Washer D.6 - GB/T97.1	4	
25	0206031	Screw M6X10 - GB/T818	4	
26	XSZ-7-19-1Y	Hose cover	1	

TAV.0	LIFT	ED. 01/17
-------	------	-----------

27	0206018	Screw M4X30 - GB/T818	3
28	0205002	Washer D.4 - GB/T97.1	2
29	XSZ-7-18-1Y	Power unit cover	1
30	0206024	Screw M5X10 – GB/T818	2
31	0205005	Washer D.5 - GB/T96	2
32	XSZ-7-18-2Y	Cover support	1
33	0206026	Screw M5X16 – GB/T818	2
34	0505020	Limit switch 8104	1
35	0206015	Screw M4X16 – GB/818	1
36	XSZ-7-5-1	Adaptor extension H.50	4
37	XSZ-7-5-2	Adaptor extension H.75	4
38	XSZ-7-5-3	Adaptor extension H.150	4

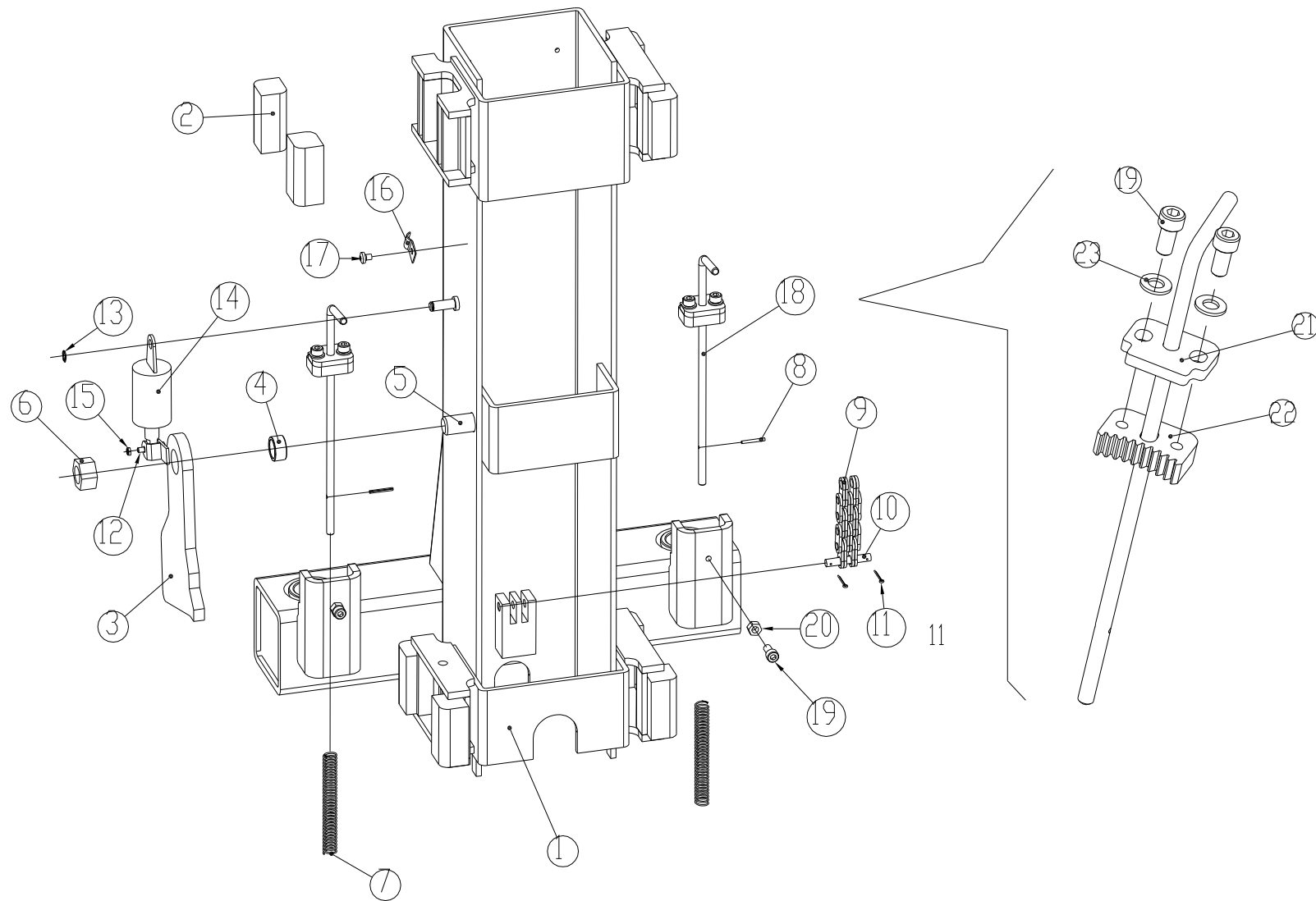


TAV.1.0	COLUMN	ED. 01/17
----------------	---------------	------------------

ITEM	PART NO.	DESCRIPTION	QTY	REMARK
1	XSZ-1-01A	Column	1	
2	XSZ-1-02A	Top cap	1	
3	0210079	Screw M12X40 - GB/T5781	4	
4	0205013	Washer D.12 - GB/T97.1	4	
5	0208009	Spring washer D.12 - GB/T93	4	
6	0203013	Nut M12 - GB/T6170	4	
7	XSZ-1-02-11	Upper pulley	1	
8	0210007	Self-lubricated bush 2518	1	
9	XSZ-1-02-12	Washer	2	
10	0212004	Seeger D.25 - GB/T894.1	5	
11	XSZ-1-01-11	Lower pulley	2	
12	0210006	Self-lubricated bush 2512	2	
13	XSZ-1-01-13	Washer	4	
14	XSZ-1-01-12	Side cover	1	
15	0206036	Screw M6X8 - GB/T818	2	
16	XSZ-2-00D	Carriage	1	
17a	SYJ(a)-63-0G	Hydraulic cylinder A	1	In power-side column
17b	SYJ(a)-63b-0G	Hydraulic cylinder B	1	In off-side column
18	0210011	Self-lubricated bush 2545	1	
19	XSZ-7-10	Chain pulley	1	
20	XSZ-7-11Y	Pulley shaft	1	
21a	0506075	Spiral electrical cable #3	1	In power-side column
21b	0506076	Spiral electrical cable #4	1	In off-side column
22	GJ350-07-03-02	U bolt	6	
23	XSZ-7-20-01	Vertical sliding shaft	1	
24	0203004	Nut M6 - GB/T6170	2	
25	0205006	Washer D.6 - GB/T97.1	2	
26	SYJa-63-10G	Cylinder liner A	1	

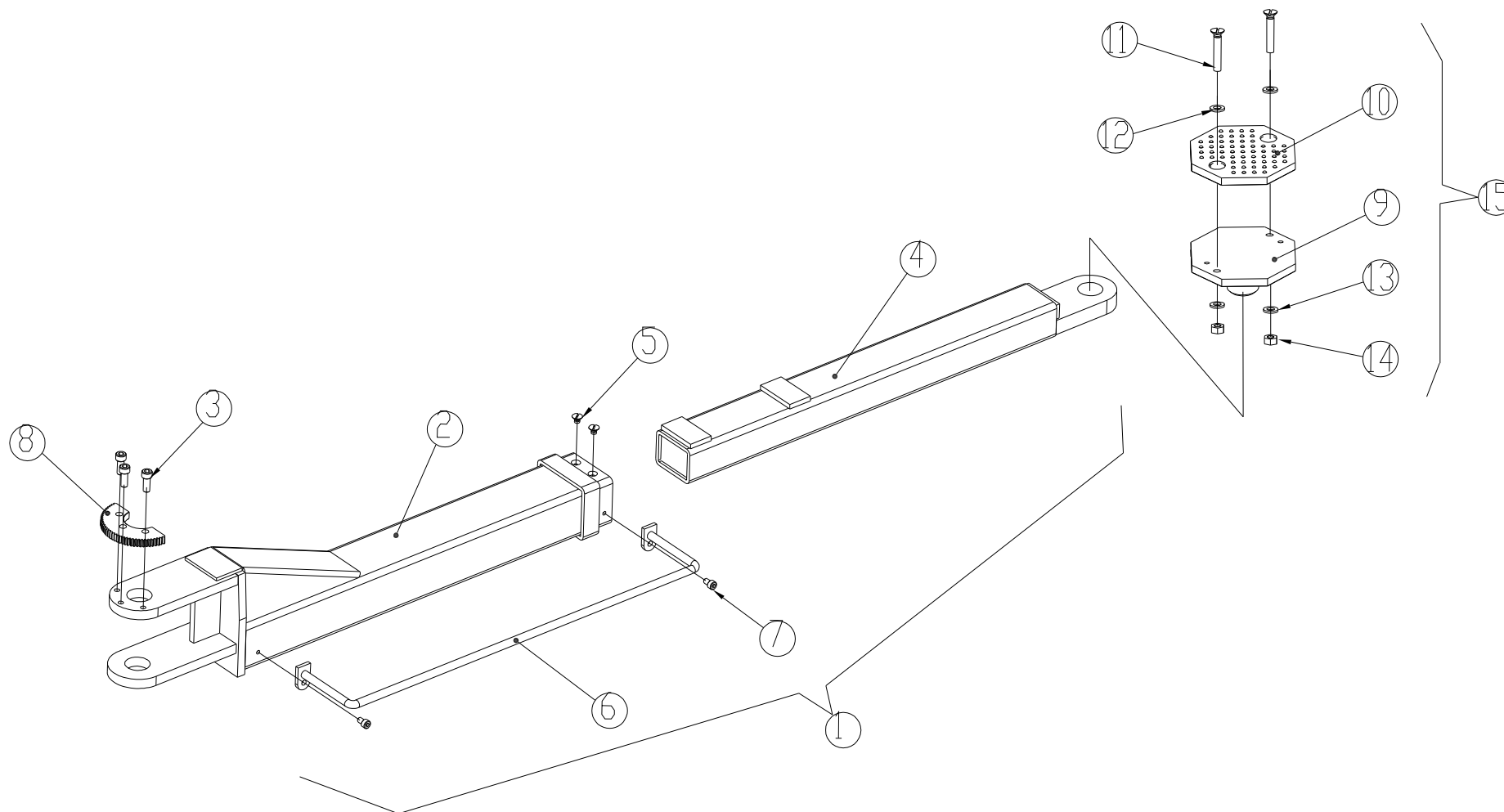
TAV.1.0	COLUMN	ED. 01/17
---------	--------	-----------

26b	SYJa-63b-10G	Cylinder liner B	1	
27	SYJ-30-63-2	Piston	1	
28	SYJa-63-4G	Cylinder shaft	1	
29	SYJ-30-63-6	Cylinder guiding cover	1	
30	0212006	Seeger D.26 - GB/T 894.1	1	
31	0312012	Gasket 63X47X18.4	1	
32	0309025	O-ring 32X3.1 - GB1235	1	
33	0305005	Guide ring BS50703-0380C-T47	1	
34	0306087	Silencer 1/8	1	
35	0311007	Scraper 38X46X5	1	
36	0307021	Parachute valve 1/4	1	For special request
37	0305016	Oil plug 1/4	1	



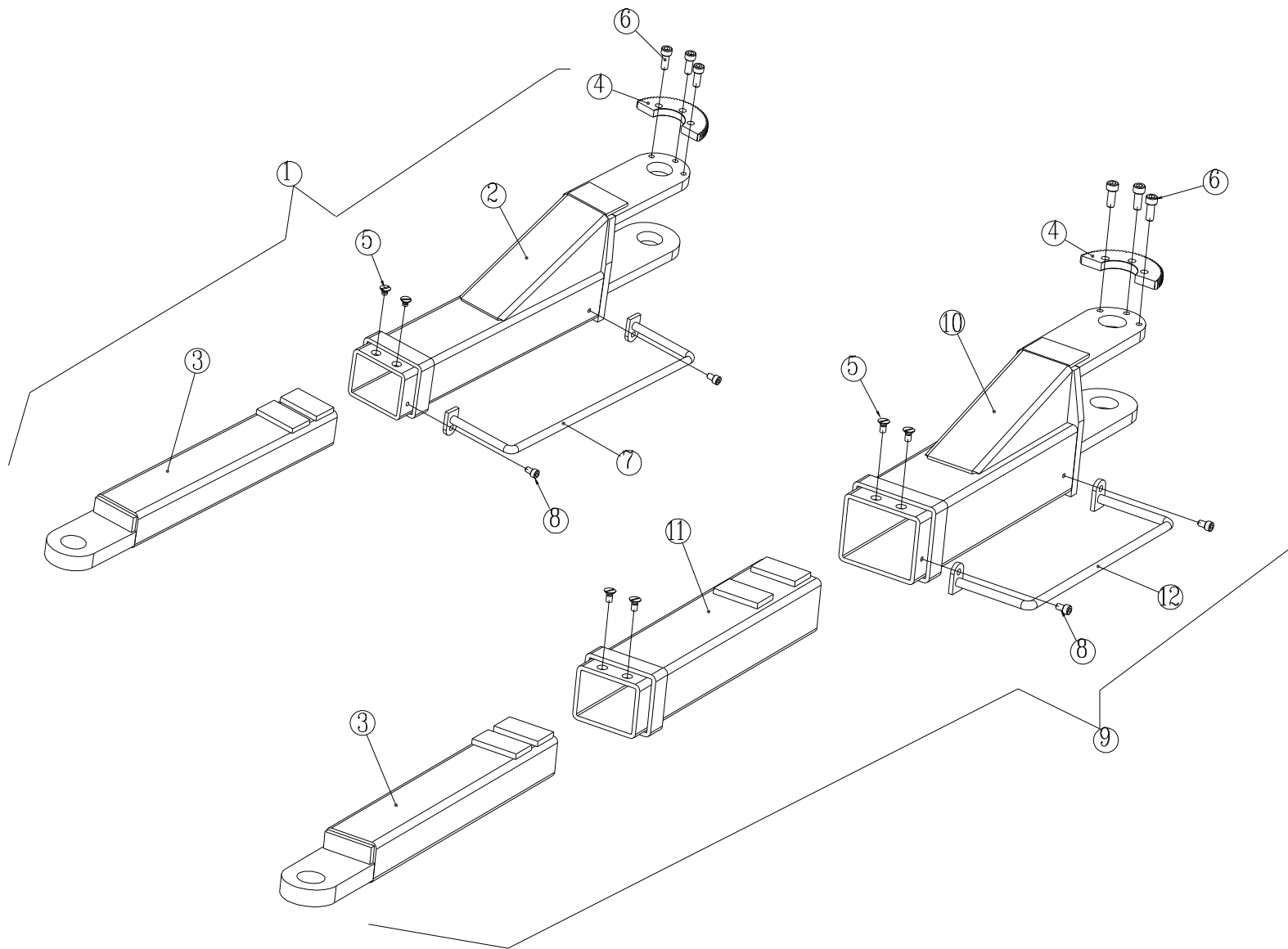
TAV.1.16	CARRIAGE	ED. 01/17
----------	----------	-----------

ITEM	PART NO.	DESCRIPTION	QTY	REMARK
1	XSZ-2D	Carriage	1	
2	XSZ-7-1	Slider	8	
3	XSZ-5D	Safety pawl	1	
4	XSZ-6-2	Bush	1	
5	0201110	Screw M20X45 - GB/T5783	1	
6	0203020	Nut M20 - GB/T6170	1	
7	XSZ-6-5	Spring	2	
8	0213002	Elastic pin 3X26 - GB/T879.1	2	
9	0215009	Chain BL644X127	1	
10	XSZ-7-12	Chain pin	1	
11	0213044	Split pin 2X20 - GB/T91	2	
12	XSZ-7-20-02D	Pin	1	
13	0212013	Seeger D.10 - GB/T894.1	1	
14	0505031	Electromagnet DC24V TZD-2A	1	
15	0204002	Self-locking nut M5 - GB/T6184	1	
16	GJ350-07-03-02	U bolt	1	
17	0206031	Screw M6X10 - GB/T818	1	
18	XSZ-6-00	Arm safety	2	
19	0202040	Screw M8X16 - GB/T70.1	6	
20	0203008	Nut M8 - GB/T6170	2	
21	XSZ-6-4Y	Release pin	2	
22	XSZ-6-7TY	Toothed plate	2	
23	0205008	Washer D.8 - GB/T97.1	4	



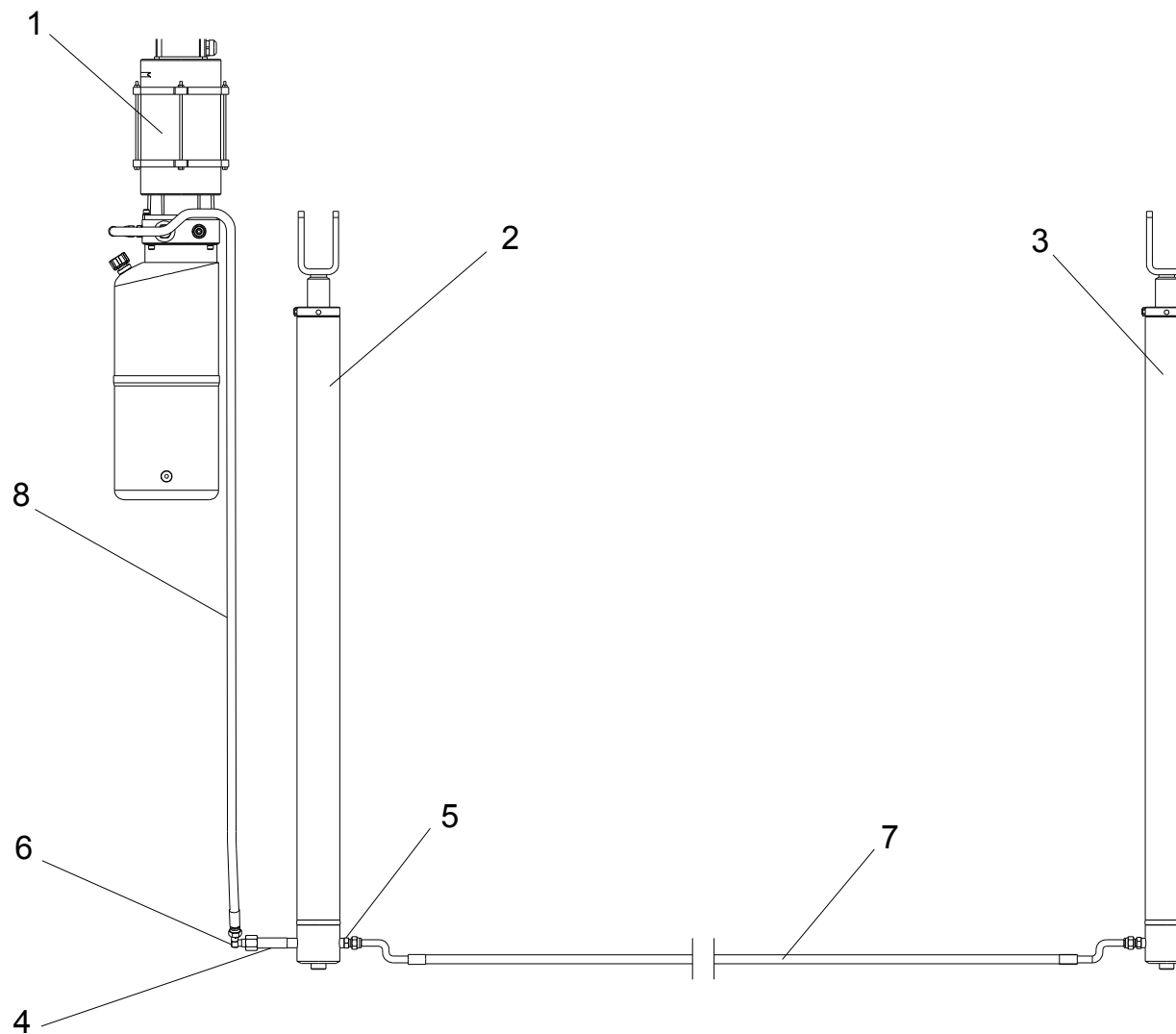
TAV.4.0	LONG ARM + ADAPTOR	ED. 01/17
---------	--------------------	-----------

ITEM	PART NO.	DESCRIPTION	QTY	REMARK
1	XSZ-3-00Y	Long arm		
2	XSZ-3Y	Long arm frame	1	
3	0202061	Screw M10X25 - GB/T70.1	3	
4	XSZ-3-7	Long arm outer extension	1	
5	0207016	Screw M8X12 - GB/T68	2	
6	XSZ-3-100Y	Welded handle L=670	1	
7	0202043	Screw M8X12 - GB/T70.1	2	
8	XSZ-3-1TY	Anti-rotating gear	1	
9	XSZ-7-3-2Y	Pickup plate	1	
10	XSZ-7-3-1	Octagonal rubber pad	1	
11	0207013	Screw M6X30 - GB/T68	2	
12	0205008	Washer D.8 - GB/T97.1	2	
13	0205006	Washer D.6 - GB/T97.1	2	
14	0203004	Nut M6 - GB/T6170	2	
15	XSZ-7-3Y	Lifting adaptor	1	



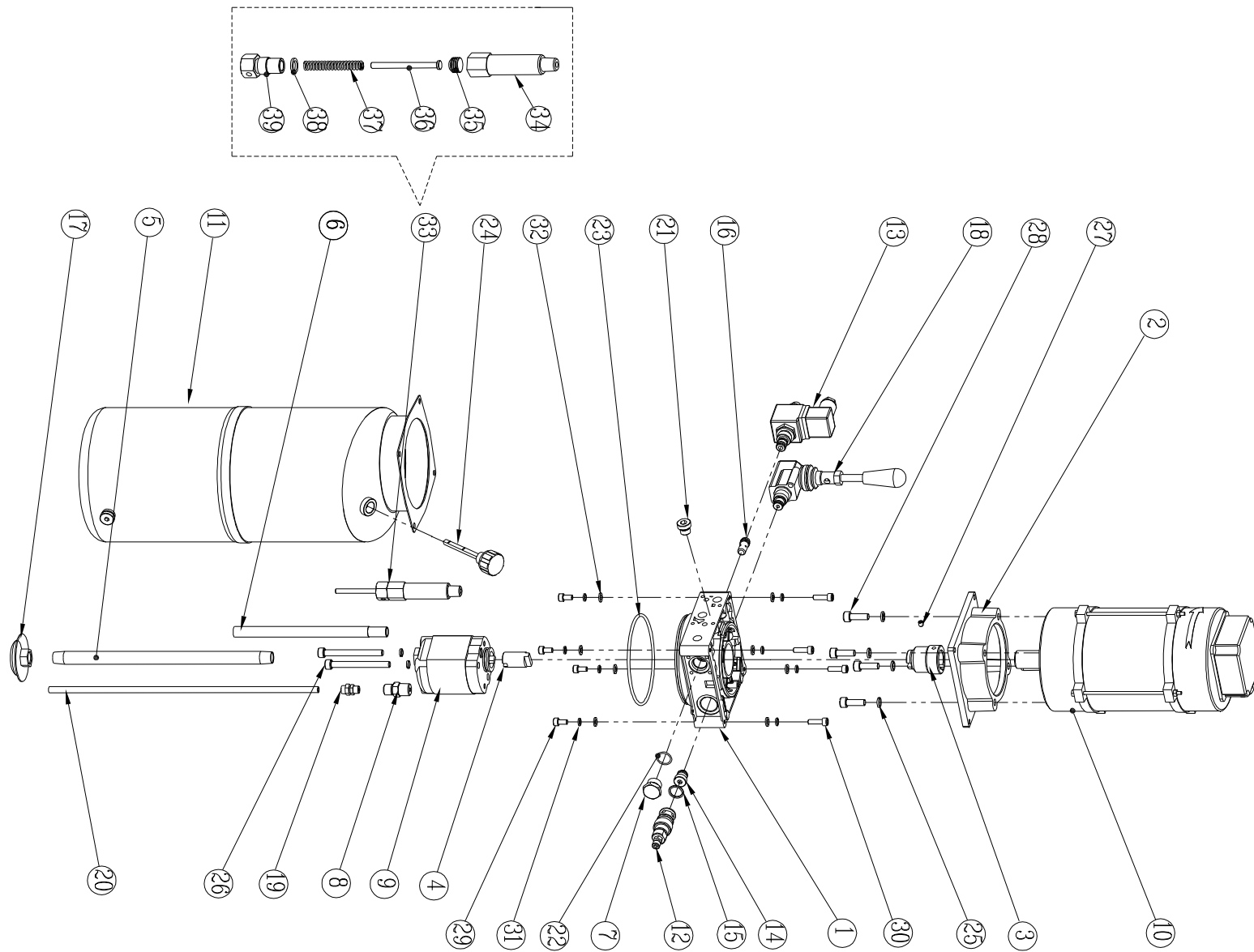
TAV.5.0	SHORT ARM	ED. 01/17
---------	-----------	-----------

ITEM	PART NO.	DESCRIPTION	QTY	REMARK
1	XSZ-3-00M	Short arm – single extension	1	
2	XSZ-3M	Short arm frame – single extension	1	
3	XSZ-4-3	Short arm outer extension	2	
4	XSZ-3-1TY	Anti-rotating gear	2	
5	0207016	Screw M8X12 - GB/T68	6	
6	0202061	Screw M10X25 - GB/T70.1	6	
7	XSZ-3-100Y	Welded handle L=520	1	
8	0202043	Screw M8X12 - GB/T70.1	4	
9	XSZ-3-00S	Short arm – double extension	1	
10	XSZ-3S	Short arm frame – double extension	1	
11	XSZ-3SZ	Short arm middle extension	1	
12	XSZ-3-100Y	Welded handle L=360	1	



TAV.14.0	HYDRAULIC LINE	ED.01/17
----------	----------------	----------

ITEM	PART NO.	DESCRIPTION	QTY	REMARK
1a	BZ-Y1-N	Hydraulic power unit	1	
1b	BZ-Y1	Hydraulic power unit	1	
2	SYJ(a)-63-0G	Hydraulic cylinder A	1	
3	SYJ(a)-63b-0G	Hydraulic cylinder B	1	
4	XSZ-7-8	Cylinder union	1	
5	0303064	Union 3/8 (1BT-04-06SP)	2	
6	0303002	90° union 1/4 (1BT9-04SP)	1	
7	SS2830	Hydraulic hose L=2830	1	
8	ZW1500	Hydraulic hose L=1500	1	

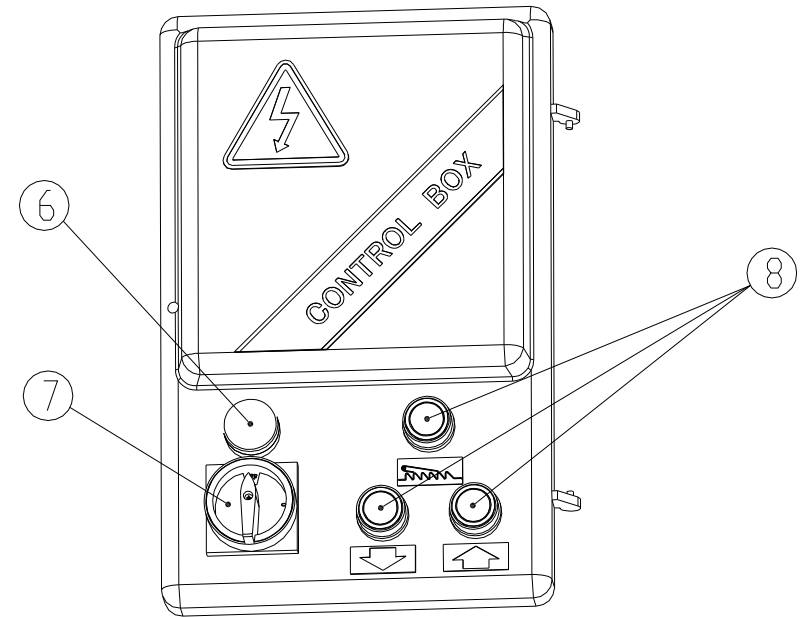
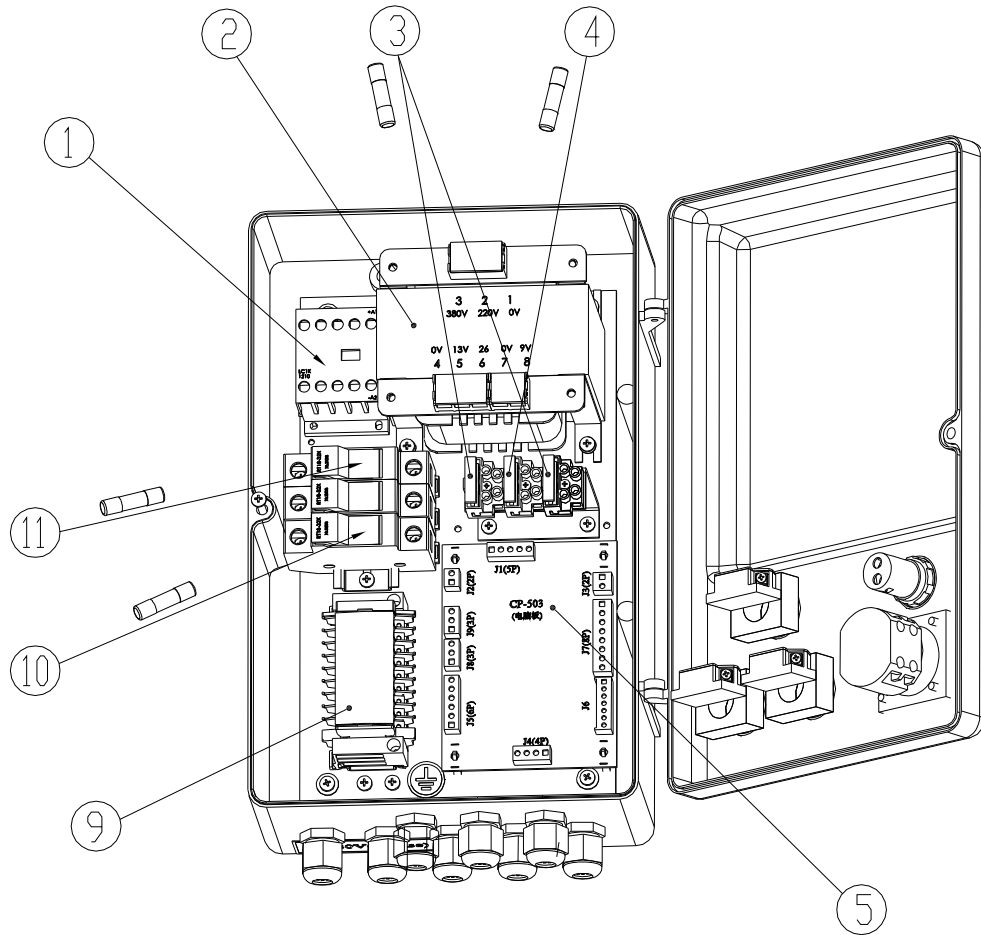


TAV.14.1	HYDRAULIC POWER UNIT	ED.01/17
----------	----------------------	----------

ITEM	PART NO.	DESCRIPTION	QTY	REMARK
1	BZ-ZB-Y1	Manifold	1	
2	BZ-DJ-1B	Motor flange	1	
3	BZ-ZT24	Motor joint	1	
4	BZ-BJ36	Pump joint	1	
5	BZ-G18X310	Oil suction pipe	1	
6	BZ-G1/4X210	Oil returning pipe	1	
7	BZ-SD-01	Plug	1	
8	0303064	Union 3/8	1	
9a	0301015	Gear pump 4.8cc	1	For 2.6KW/3PH 4P motor
9b	0301008	Gear pump 2.1cc	1	For 2.2KW/1PH 2P motor
10a	0509070	Motor 220V/380V/50HZ/3PH 2.6KW 4P	1	
10b	0509075	Motor 230V/400V/50HZ/3PH 2.6KW	1	
10c	0509039	Motor 220V/380V/60HZ/3PH 2.6KW	1	
10d	0509071	Motor 220V/50HZ/1PH 2.2KW	1	
10e	0509068	Motor 230V/50HZ/1PH 2.2KW	1	
10f	0509092	Motor 220V/60HZ/1PH 2.2KW	1	
11	0305033	Oil tank Y123-10	1	
12	0307010	Pressure overload valve	1	
13	0307048	Lowering solenoid valve DC24V	1	
14	0307067	Non-return valve	1	
15	0313057	Copper washer 16X20	1	
16	0307006	Lowering speed control valve D.2.5	1	
17	0305010	Oil filter 3/8	1	
18	0307012	Emergency hand pump	1	Optional
19	0306069	Union 8-1/8 (FN-8-01)	1	
20	0306097	Rilsan hose 8X5 L=370mm	1	
21	0305016	Plug 1/4	1	

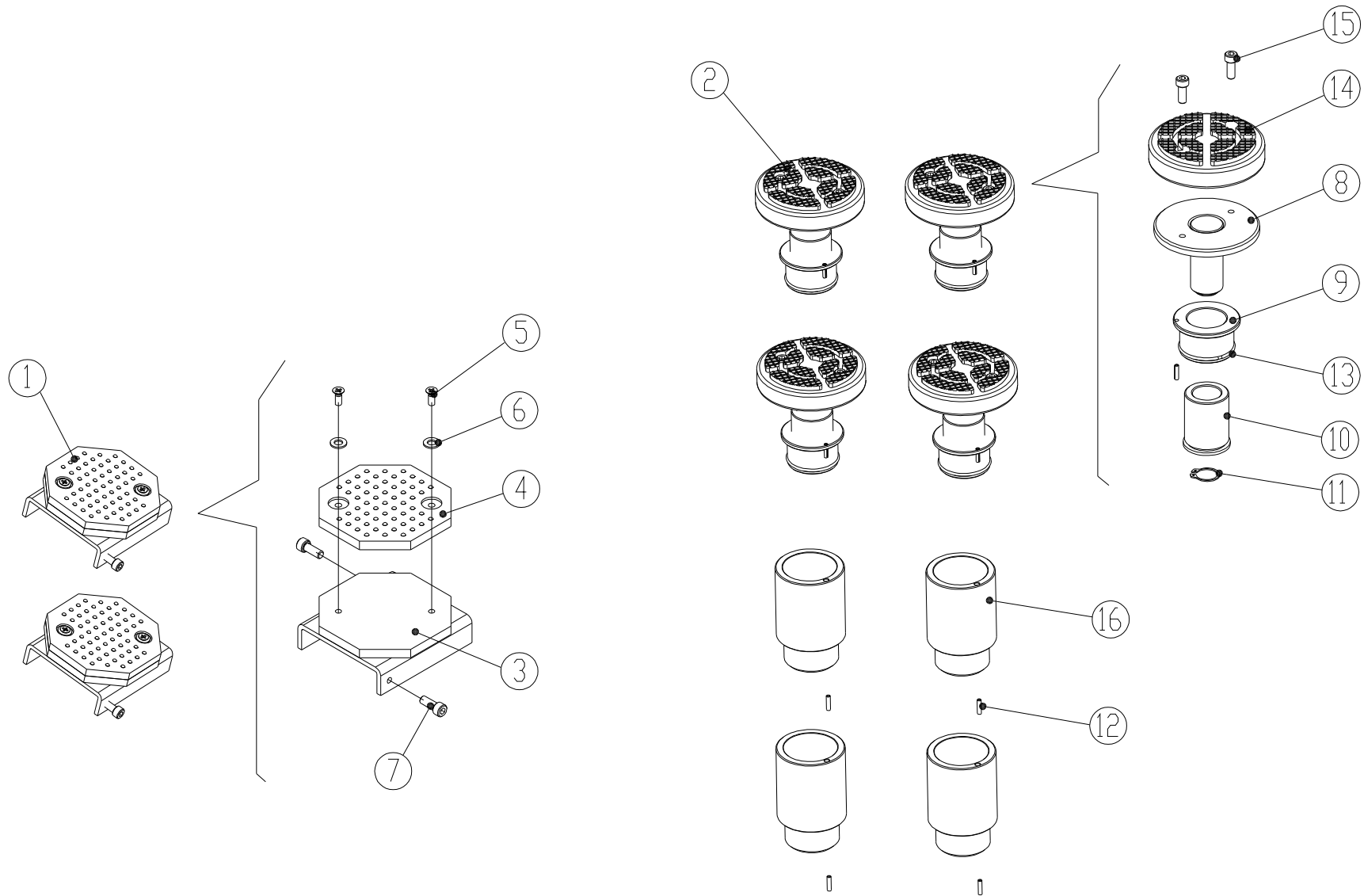
TAV.14.1	HYDRAULIC POWER UNIT	ED.01/17
----------	----------------------	----------

22	0309054	O-ring 17.0X1.8 - GB3452.1	1	
23	0309060	O-ring 115X3.55 - GB3452.1	1	
24	0305026	Oil level plug 3/8	1	
25	0208006	Spring washer D.8 - GB/T93	6	
26	0202045	Screw M8X80 - GB/T70.1	2	
27	0209030	Screw M6X8 - GB/T78	1	
28	0202045	Screw M8X20 - GB/T70.1	4	
29	0202024	Screw M6X12 - GT/T70.1	4	
30	0202033	Screw M6X20 - GB/T70.1	4	
31	0208005	Spring washer D.6 - GB/T93	8	
32	0205006	Washer D.6 - GB/97.1	8	
33	BZ-HC-0	Start-up valve unit	1	For 1Ph motor
34	BZ-HC-1	Valve body	1	
35	BZ-HC-2	Valve	1	
36	BZ-HC-3	Valve pin	1	
37	BZ-HC-4	Spring	1	
38	BZ-HC-6	Seal 16X9X2.5	1	
39	BZ-HC-5	Valve back cover	1	



TAV.18.0	CONTROL PANEL	ED.01/17
----------	---------------	----------

ITEM	PART NO.	DESCRIPTION	QTY	REMARK
1	0501044	Contactor 1210/DC24V	1	
2a	0503054	Transformer 200VA 220V/380V	1	
2b	0503070	Transformer 200VA 230V/400V	1	
3	0504003	Overload cutoff 2A 5X20	2	
4	0504015	Overload cutoff 10A 5X20	1	
5	0507071	Control board CP-503.1	1	
6	0502023	Pilot lamp 24V	1	
7	0505022	Power switch 20A	1	
8	0502003	Pushbutton LAY37-10	3	
9	0507099	Wiring terminal TK-1T10AX8	1	
10a	0504009	Overload cutoff 16A 10X38	3	For 380V/400V
10b	0504013	Overload cutoff 32A 10X38	2	For 220V/230V
11	0504017	Overload cutoff 12A 10X38	1	



OPTIONAL ADAPTOR

ED.01/17

ITEM	PART NO.	DESCRIPTION	QTY	REMARK
1	XSZ-7-4Y	Sliding adaptor	2	
2	6540-14300	Screwed lifting adaptor	4	
3	XSZ-7-4-2Y	Slide	2	
4	XSZ-7-3-1	Octagonal rubber pad	2	
5	0207011	Screw M6X16 - GB/T819.1	4	
6	0205006	Washer D.6 - GB/T97.1	4	
7	0202045	Screw M8X20 - GB/T70.1	4	
8	6540-14310	Pad support	4	
9	6540-14305	Outer thread bush	4	
10	6540-14303A	Inner thread bush	4	
11	0212003	Seeger D.24 - GB/T894.1	4	
12	0213066	Elastic pin 4X16 - GB/T879.1	8	
13	0211008	Seeger D.55 - GB/T8952	4	
14	6540-14321	Round rubber pad	4	
15	0202045	Screw M8X20 - GB/T70.1	8	
16	6540-14302	Adaptor extension H.80	4	