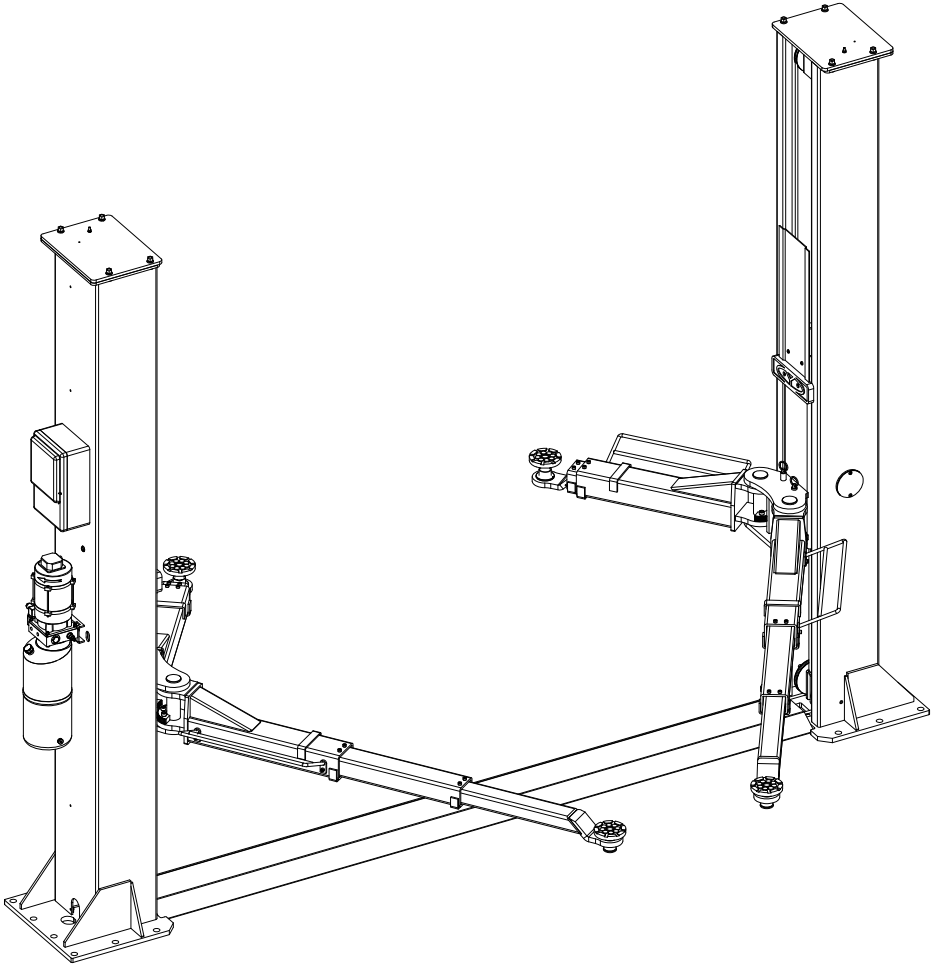
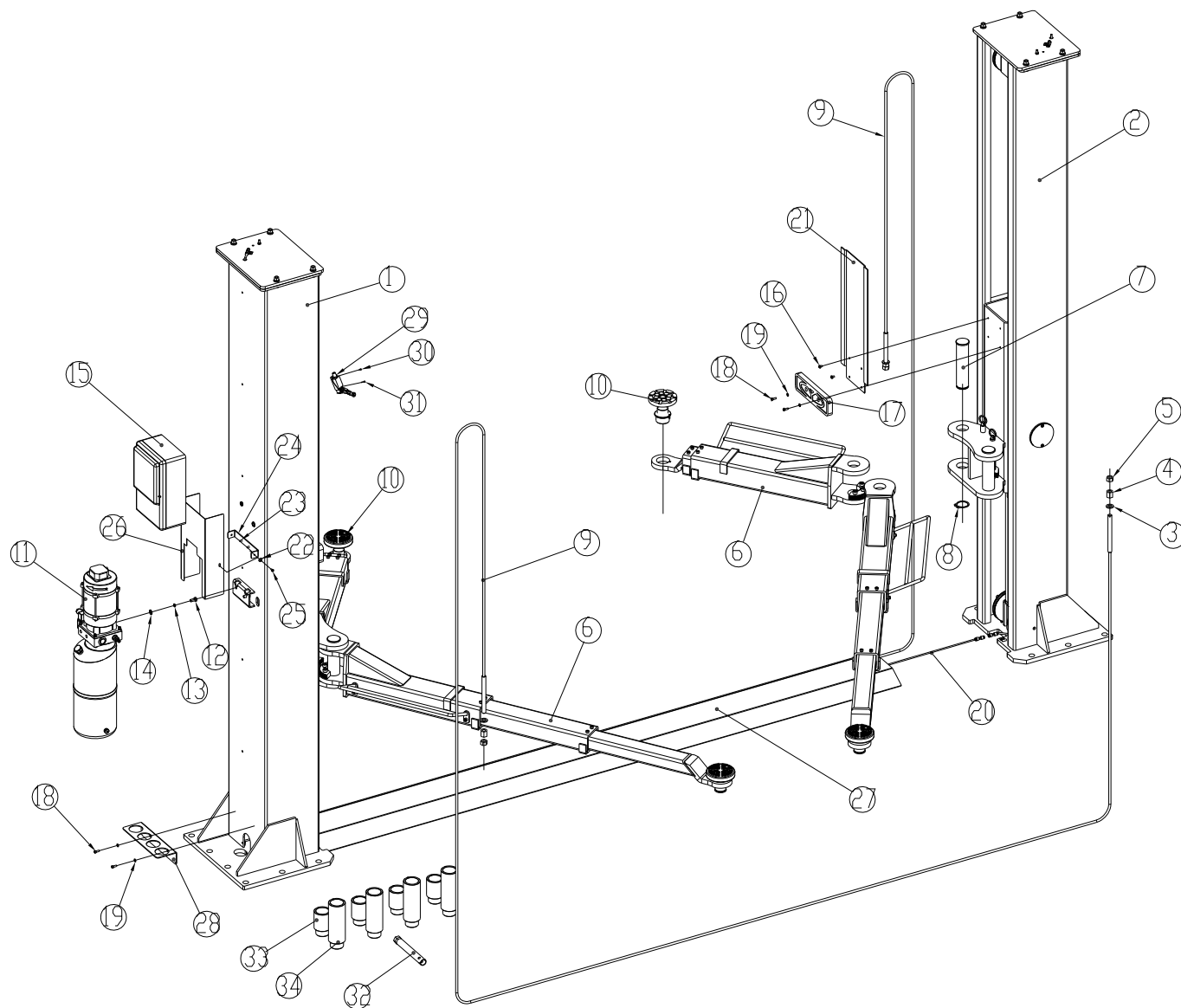


ED. 10/2012

**PART CATALOGUE**  
**STD-6150**  
**TWO POST LIFT**



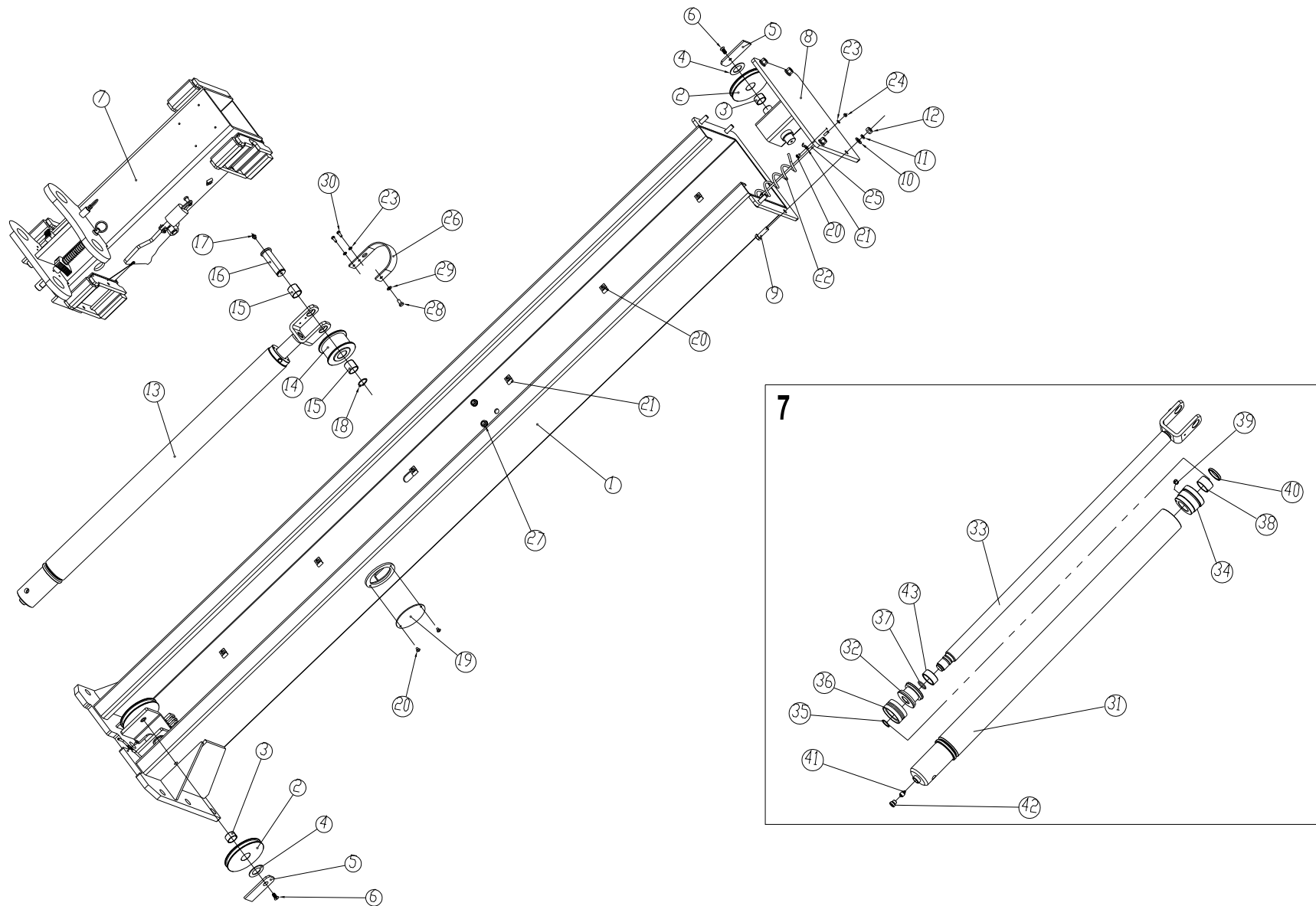


TAV.0	LIFT	ED. 10/12
-------	------	-----------

ITEM	PART NO.	DESCRIPTION	QTY	REMARK
1	Z50-100000D	Power-side column	1	
2	Z50-100000D	Off-side column	1	
3	0205020	Washer D.16 - GB/T97.1	4	
4	0204028	Nut M16 - GB/T56	4	
5	0203017	Nut M16 - GB/T6170	4	
6	Z50-211000	Lifting arm – double extensions	4	
7	Z50-213101	Arm shaft	4	
8	0212009	Seeger D.50 - GB/T894.1	4	
9	Z50-140400	Equalizer steel cable L=8790	2	
10	6540-14300	Lifting adaptor	4	
11	BZ-YK1	Hydraulic power unit	1	
12	0201062	Screw M10X20 - GB/T5781	2	
13	0208007	Spring washer D.10 - GB/T93	2	
14	0205011	Washer D.10 - GB/T97.1	2	
15	1064211000	Control panel	1	
16	0206031	Screw M6X10 - GB/T818	4	
17	XSZ-8-802-2	Rubber protection	2	
18	0202032	Screw M6X16 - GB/T70.1	6	
19	0205006	Washer D.6 - GB/T97.1	6	
20	0506011	Safety release electrical cable 2X1.0 L=4900	1	
21	XSZ-8-101A	Protective plate	2	
22	0205005	Washer D.5 - GB/T96	2	
23	0206026	Screw M5X16 – GB/T818	2	
24	XSZ-7-18-2Y	Cover support	1	
25	0206024	Screw M5X10 – GB/T818	2	
26	XSZ-7-18-1Y	Power unit cover	1	
27	Z50-310101	Base plate	1	

TAV.0	LIFT		ED. 10/12
-------	------	--	-----------

28	Z50-310201	Adaptor extension storage	1	
29	0505020	Limit switch 8104	1	
30	0206015	Screw M4X16 – GB/818	1	
31	0206018	Screw M4X30 - GB/T818	1	
32	XSZ-7-14	Equalizer cable wrench	1	
33	6540-14302	Adaptor extension H.80	4	
34	6540-14304	Adaptor extension H.180	4	For special request

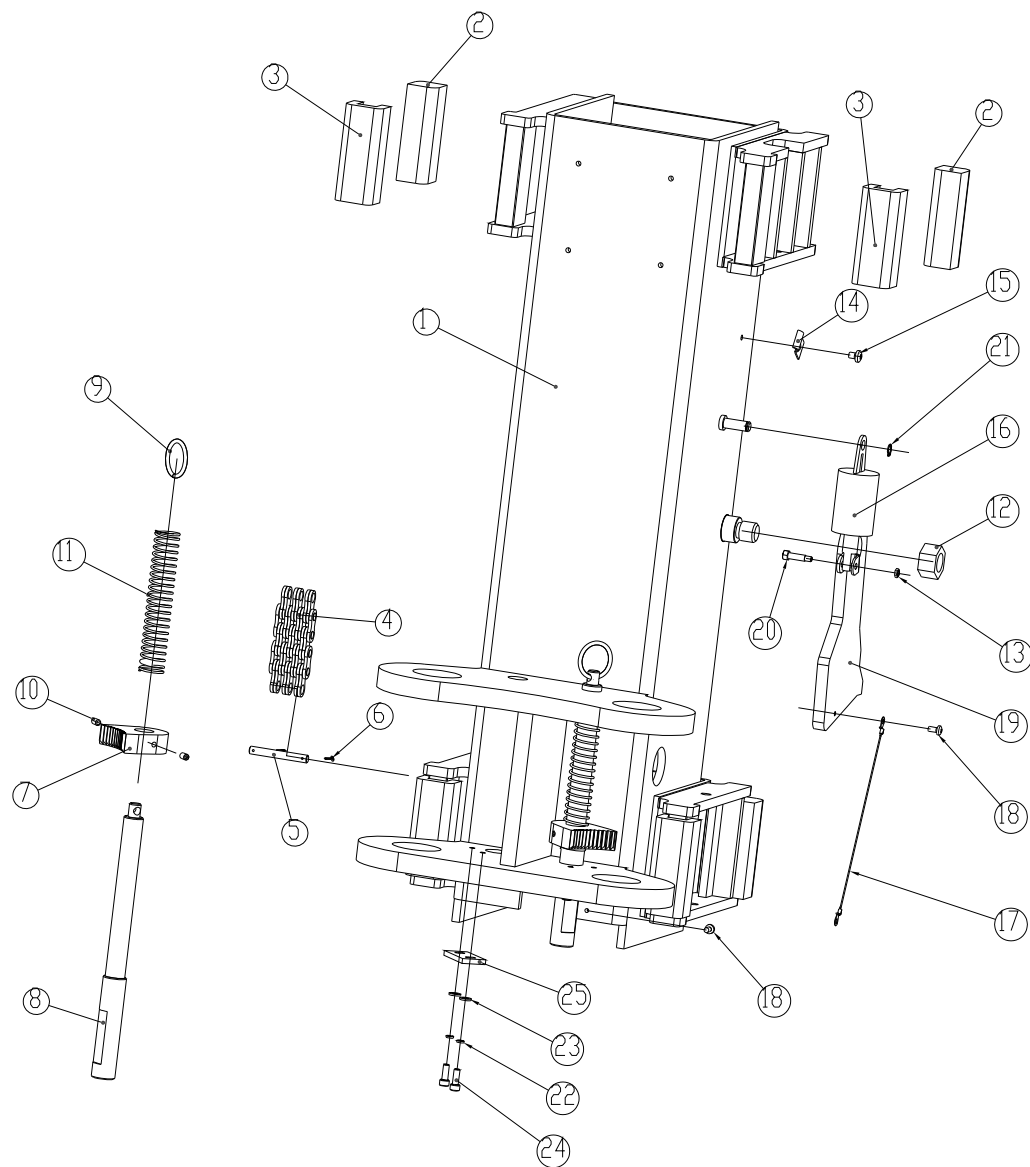


TAV.1.0	COLUMN	ED. 10/12
---------	--------	-----------

ITEM	PART NO.	DESCRIPTION	QTY	REMARK
1	Z50-110000B	Column	1	
2	Z50-140102	Cable pulley	3	
3	0210065	Self-lubricated bush 3018	3	
4	Z50-140104	Washer	3	
5	Z50-140103	Derailment safety plate	3	
6	0207036	Screw M8X20 - GB/T70.3	3	
7	Z50-120000D	Carriage	1	
8	Z50-130100	Top cap	1	
9	0210079	Screw M12X40 - GB/T5781	4	
10	0205013	Washer D.12 - GB/T97.1	4	
11	0208009	Spring washer D.12 - GB/T93	4	
12	0203013	Nut M12 - GB/T6170	4	
13a	6150-70-0	Hydraulic cylinder A	1	In power-side column
13b	6150-70b-0	Hydraulic cylinder B	1	In off-side column
14	Z50-150101	Chain pulley	1	
15	0210015	Self-lubricant bush 3030	2	
16	Z50-150102	Pulley shaft	1	
17	0215021	Greaser 8X1	1	
18	0212021	Seeger D.30 GB/T894.1	1	
19	XSZ-1-01-12	Side cover	1	
20	0206036	Screw M6X8 - GB/T818	11	
21	GJ350-07-03-02	U bolt	9	
22a	0506075	Spiral electrical cable #3	1	In power-side column
22b	0506076	Spiral electrical cable #4	1	In off-side column
23	0205006	Washer D.6 - GB/T97.1	4	
24	0203004	Nut M6 - GB/T6170	2	
25	XSZ-7-20-01	Vertical sliding shaft	1	
26	Z50-150103	Chain collar	1	

TAV.1.0	COLUMN	ED. 10/12
---------	--------	-----------

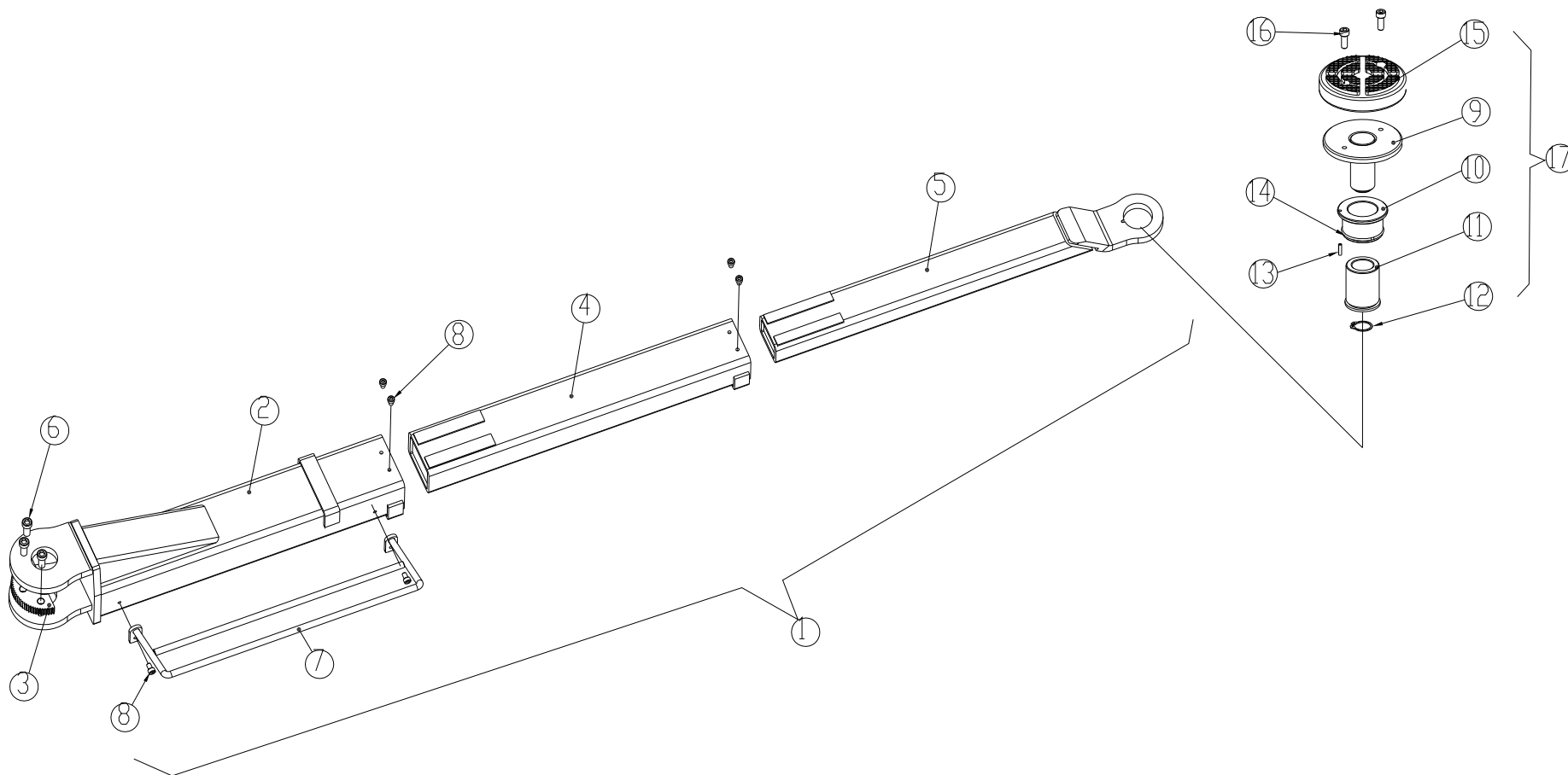
27	0606024	Cable holder D.16	2	
28	0201025	Screw M8X16 – GB/T5781	1	
29	0205008	Washer D.8 - GB/T97.1	1	
30	0201012	Screw M6X16 – GB/T5781	2	
31a	6150-70-0	Cylinder liner A	1	
31b	6150-70b-0	Cylinder liner B	1	
32	SYJa-70-2	Piston	1	
33	6150-70-4	Cylinder shaft	1	
34	SYJa-70-6	Cylinder guiding cover	1	
35	0212006	Seeger D.26 - GB/T 894.1	1	
36	0312014	Gasket 70X50X22.4	1	
37	0309025	O-ring 32X3.1 - GB1235	1	
38	0305006	Guide ring 40X25X2.5	1	
39	0306087	Silencer 1/8	1	
40	0311008	Scraper 40X48X5	1	
41	0307021	Parachute valve 1/4	1	For special request
42	0305016	Oil plug 1/4	1	
43	6150-70-5	Spacer	1	





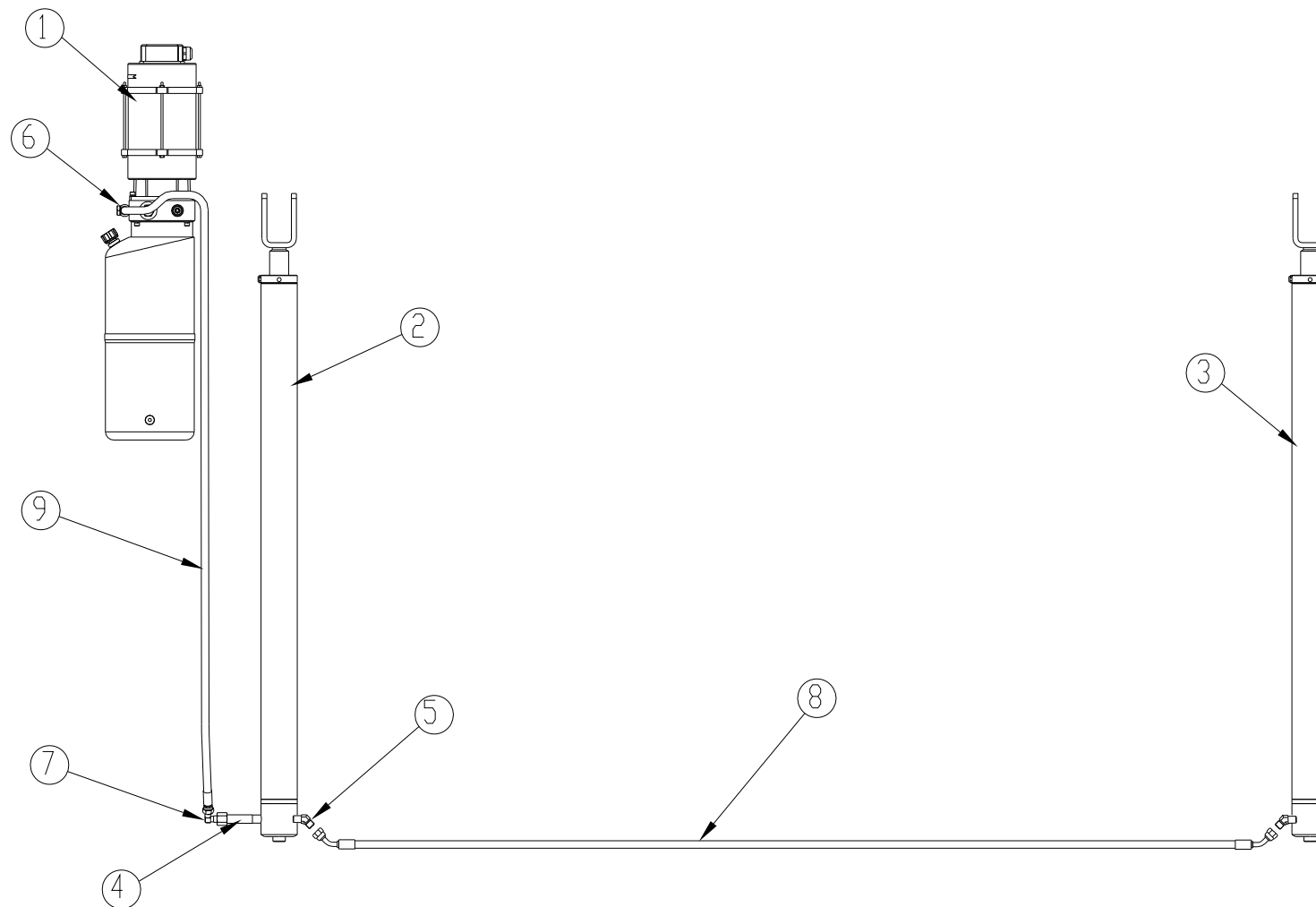
TAV.1.7	CARRIAGE	ED. 10/12
---------	----------	-----------

ITEM	PART NO.	DESCRIPTION	QTY	REMARK
1	Z50-120100D	Carriage	1	
2	Z50-140201	Slider	4	
3	Z50-140202	Slider	4	
4	0215060	Chain BL666X129	1	
5	XSZ-7-12	Chain pin	1	
6	0213044	Split pin 2X20 - GB/T91	2	
7	Z50-212101	Toothed plate	2	
8	Z50-212102	Safety release pin	2	
9	Z50-212104	Safety release ring	2	
10	0209037	Screw M6X10 - GB/T80	4	
11	Z50-212103	Safety release spring	2	
12	0203020	Nut M20 - GB/T6170	1	
13	0204002	Self-locking nut M5 - GB/T6184	1	
14	GJ350-07-03-02	U bolt	1	
15	0206036	Screw M6X8 - GB/T818	1	
16	0505031	Electromagnet DC24V TZD-2A	1	
17	XSZ-7-40	Emergency safety release wire	1	
18	0206024	Screw M5X10 - GB/T818	2	
19	XSZ-5D	Safety pawl	1	
20	XSZ-7-20-02D	Pin	1	
21	0212013	Seeger D.10 - GB/T894.1	1	
22	0208007	Spring washer D.6 - GB/T93	4	
23	0205006	Washer D.6 - GB/T97.1	4	
24	0202032	Screw M6X16 - GB/T70.1	4	
25	Z50-212105	Anti-rotation plate	2	



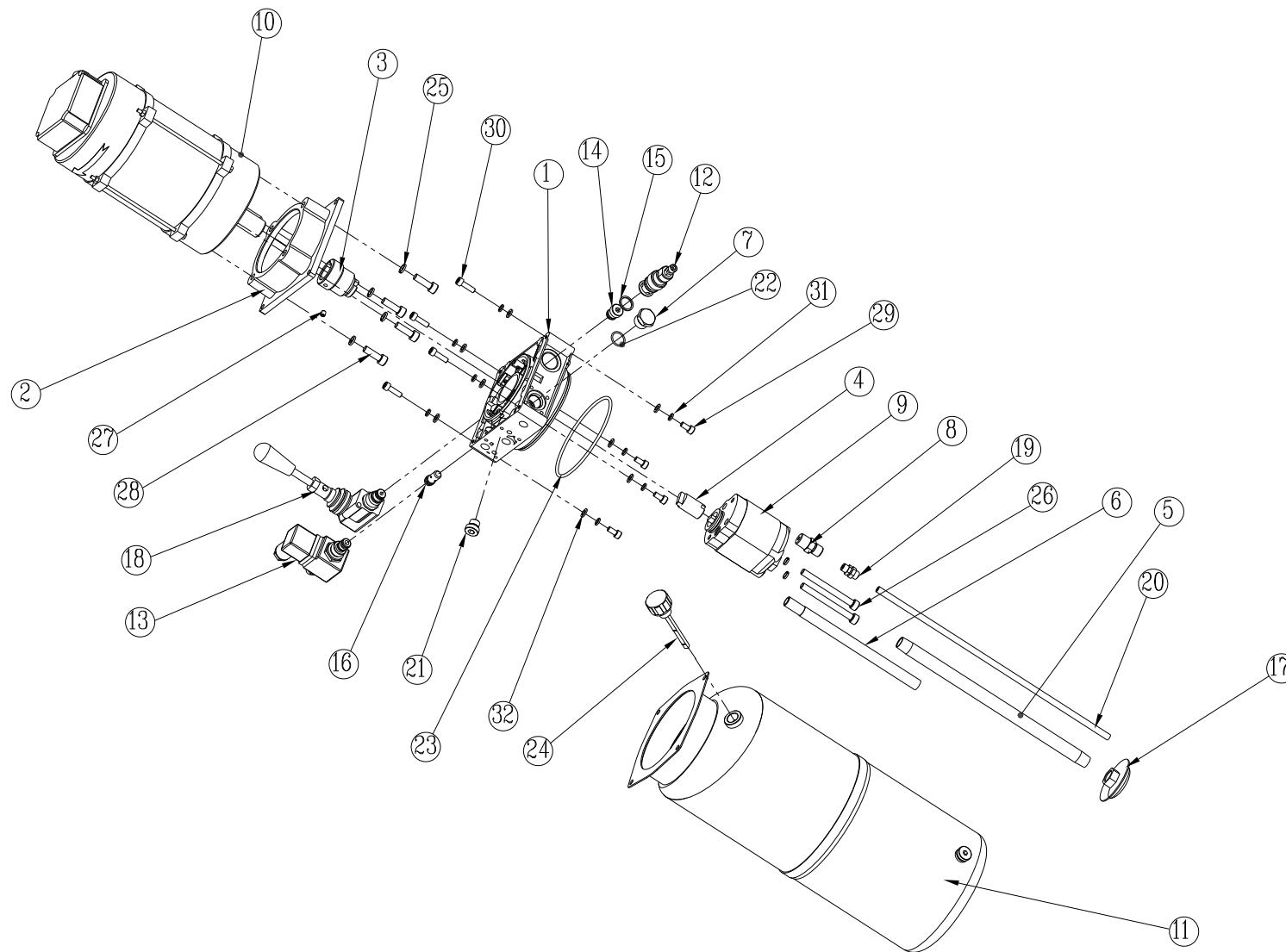
TAV.6.0	LIFTING ARM	ED. 10/12
---------	-------------	-----------

ITEM	PART NO.	DESCRIPTION	QTY	REMARK
1	Z50-211000	Lifting arm – double extensions	1	
2	Z50-211100	Arm frame	1	
3	Z50-211801	Anti-rotating gear	1	
4	Z50-211200	Arm middle extension	1	
5	Z50-211300	Arm outer extension	1	
6	0202090	Screw M12X30 - GB/T70.1	3	
7	XSZ-3-100TY	Welded handle L=520	1	
8	0202043	Screw M8X12 - GB/T70.1	6	
9	6540-14310	Pad support	1	
10	6540-14305	Outer thread bush	1	
11	6540-14303A	Inner thread bush	4	
12	0212003	Seeger D.24 - GB/T894.1	4	
13	0213066	Elastic pin 4X16 - GB/T879.1	8	
14	0211008	Seeger D.55 - GB/T8952	4	
15	6540-14321	Round rubber pad	4	
16	0202045	Screw M8X20 - GB/T70.1	8	
17	6540-14300	Lifting adaptor		



TAV.11.0	HYDRAULIC LINE	ED.10/12
----------	----------------	----------

ITEM	PART NO.	DESCRIPTION	QTY	REMARK
1	BZ-YK1	Hydraulic power unit	1	
2	6150-70-0	Hydraulic cylinder A	1	
3	6150-70b-0	Hydraulic cylinder B	1	
4	XSZ-7-8	Cylinder union	1	
5	0303037	Elbow union 1/4 (1BT4-04-06)	2	
6	0313001	Washer 1/4	2	
7	0303002	90° union 1/4 (1BT9-04SP)	1	
8	6150-XX2790	Hydraulic hose L=2700	1	
9	6100-ZJ1500	Hydraulic hose L=1500	1	



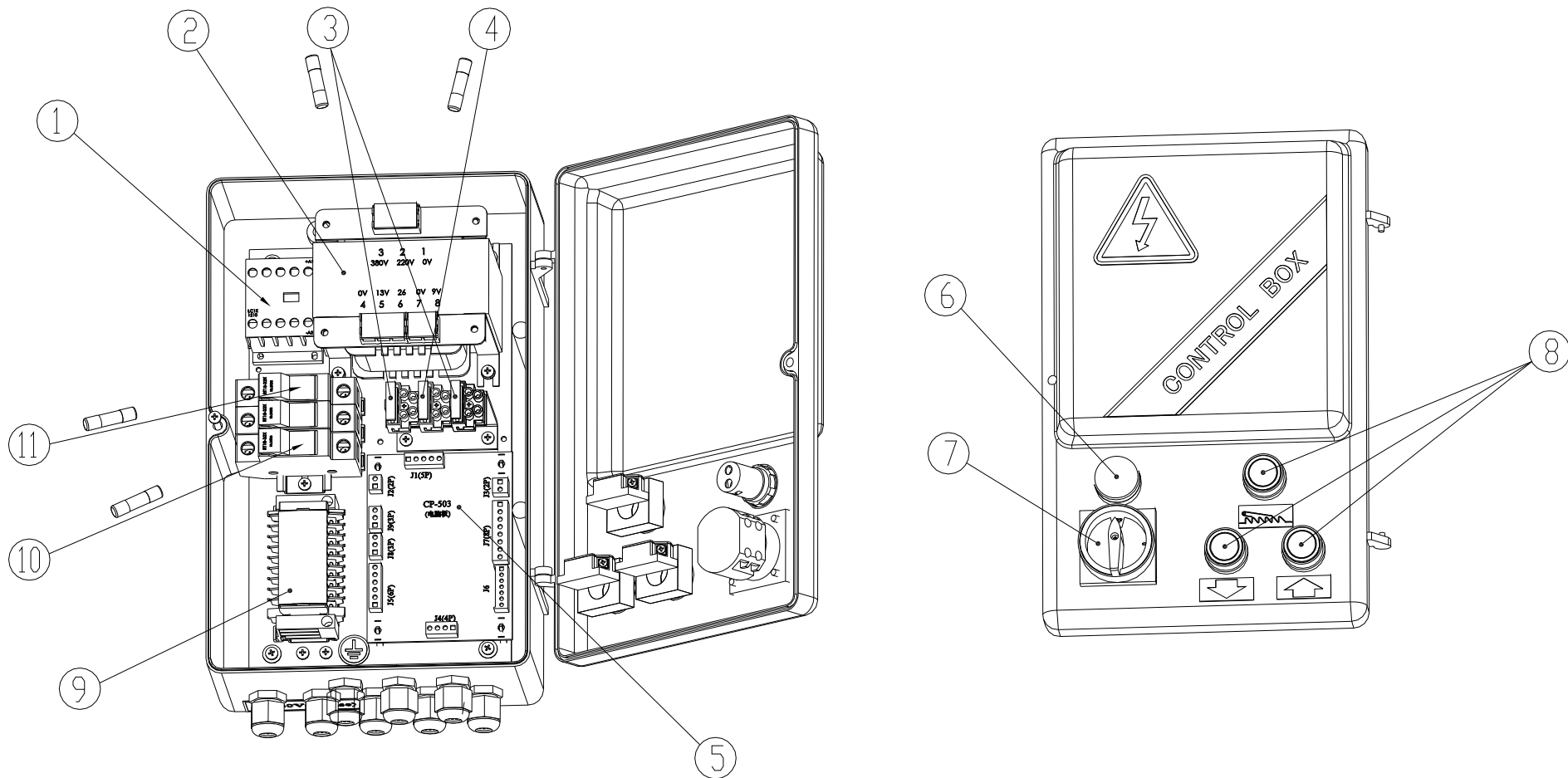
TAV.11.1	HYDRAULIC POWER UNIT	ED.10/12
----------	----------------------	----------

ITEM	PART NO.	DESCRIPTION	QTY	REMARK
1	BZ-ZB-Y1	Manifold	1	
2	BZ-DJ-1B	Motor flange	1	
3	BZ-ZT24	Motor joint	1	
4	BZ-BJ36	Pump joint	1	
5	BZ-G18X310	Oil suction pipe	1	
6	BZ-G1/4X210	Oil returning pipe	1	
7	BZ-SD-01	Plug	1	
8	0303064	Union 3/8	1	
9a	0301015	Gear pump 4.8cc	1	For 2.6KW/3PH 4P motor
9b	0301008	Gear pump 2.1cc	1	For 2.2KW/1PH 2P motor
10a	0509070	Motor 220V/380V/50HZ/3PH 2.6KW 4P	1	
10b	0509075	Motor 230V/400V/50HZ/3PH 2.6KW	1	
10c	0509039	Motor 220V/380V/60HZ/3PH 2.6KW	1	
10d	0509071	Motor 220V/50HZ/1PH 2.2KW	1	
10e	0509068	Motor 230V/50HZ/1PH 2.2KW	1	
10f	0509092	Motor 220V/60HZ/1PH 2.2KW	1	
11	0305033	Oil tank Y123-10	1	
12	0307010	Pressure overload valve	1	
13	0307048	Lowering solenoid valve DC24V	1	
14	0307067	Non-return valve	1	
15	0313057	Copper washer 16X20	1	
16	0307006	Lowering speed control valve D.2.5	1	
17	0305010	Oil filter 3/8	1	
18	0307012	Emergency hand pump	1	Optional
19	0306069	Union 8-1/8 (FN-8-01)	1	
20	0306097	Rilsan hose 8X5 L=370mm	1	
21	0305016	Plug 1/4	1	

TAV.11.1	HYDRAULIC POWER UNIT	ED.10/12
----------	----------------------	----------

22	0309054	O-ring 17.0X1.8 - GB3452.1	1
23	0309060	O-ring 115X3.55 - GB3452.1	1
24	0305026	Oil level plug 3/8	1
25	0208006	Spring washer D.8 - GB/T93	6
26	0202045	Screw M8X80 - GB/T70.1	2
27	0209030	Screw M6X8 - GB/T78	1
28	0202045	Screw M8X20 - GB/T70.1	4
29	0202024	Screw M6X12 - GT/T70.1	4
30	0202033	Screw M6X20 - GB/T70.1	4
31	0208005	Spring washer D.6 - GB/T93	8
32	0205006	Washer D.6 - GB/97.1	8





TAV.15.0	CONTROL PANEL	ED. 10/12
----------	---------------	-----------

ITEM	PART NO.	DESCRIPTION	QTY	REMARK
1	0501044	Contactor 1210/DC24V	1	
2a	0503054	Transformer 200VA 220V/380V	1	
2b	0503070	Transformer 200VA 230V/400V	1	
3	0504003	Overload cutoff 2A 5X20	2	
4	0504015	Overload cutoff 10A 5X20	1	
5	0507071	Control board CP-503.1	1	
6	0502023	Pilot lamp 24V	1	
7	0505028	Power switch 20A	1	
8	0502003	Pushbutton LAY37-10	3	
9	0507099	Wiring terminal TK-1T10AX8	1	
10a	0504009	Overload cutoff 16A 10X38	3	For 380V/400V
10b	0504013	Overload cutoff 32A 10X38	2	For 220V/230V
11	0504017	Overload cutoff 12A 10X38	1	