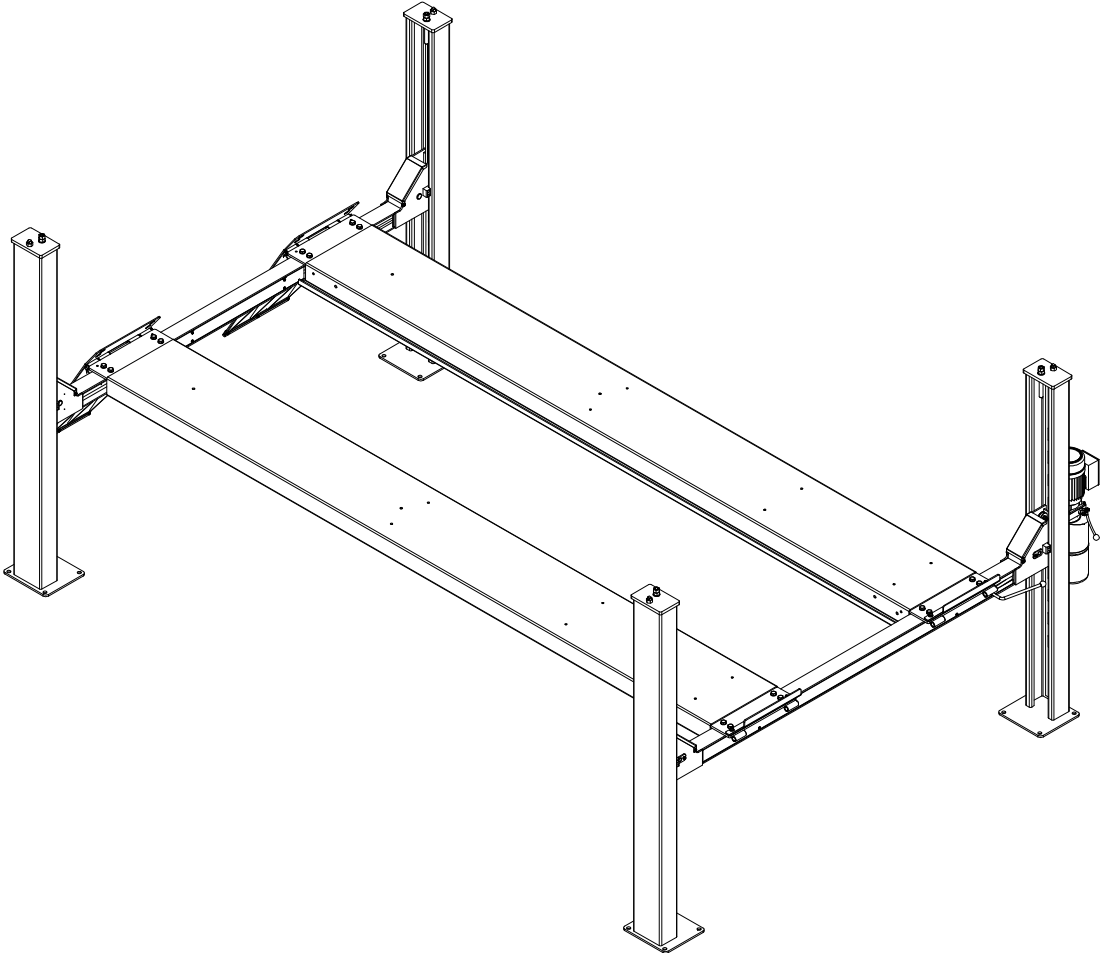
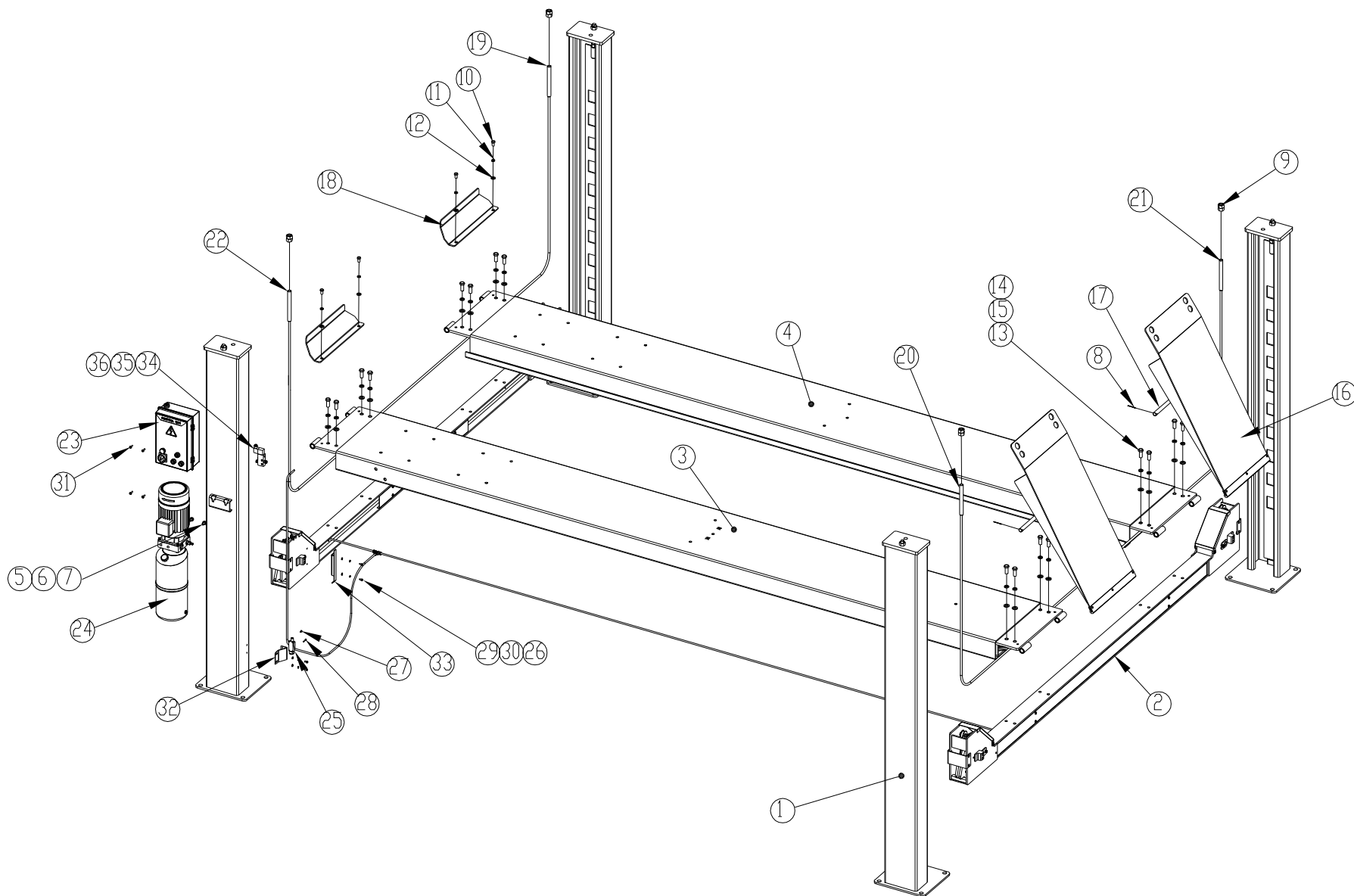




ED. 11/2017

PART CATALOGUE
STD-6745BL
FOUR POST LIFT



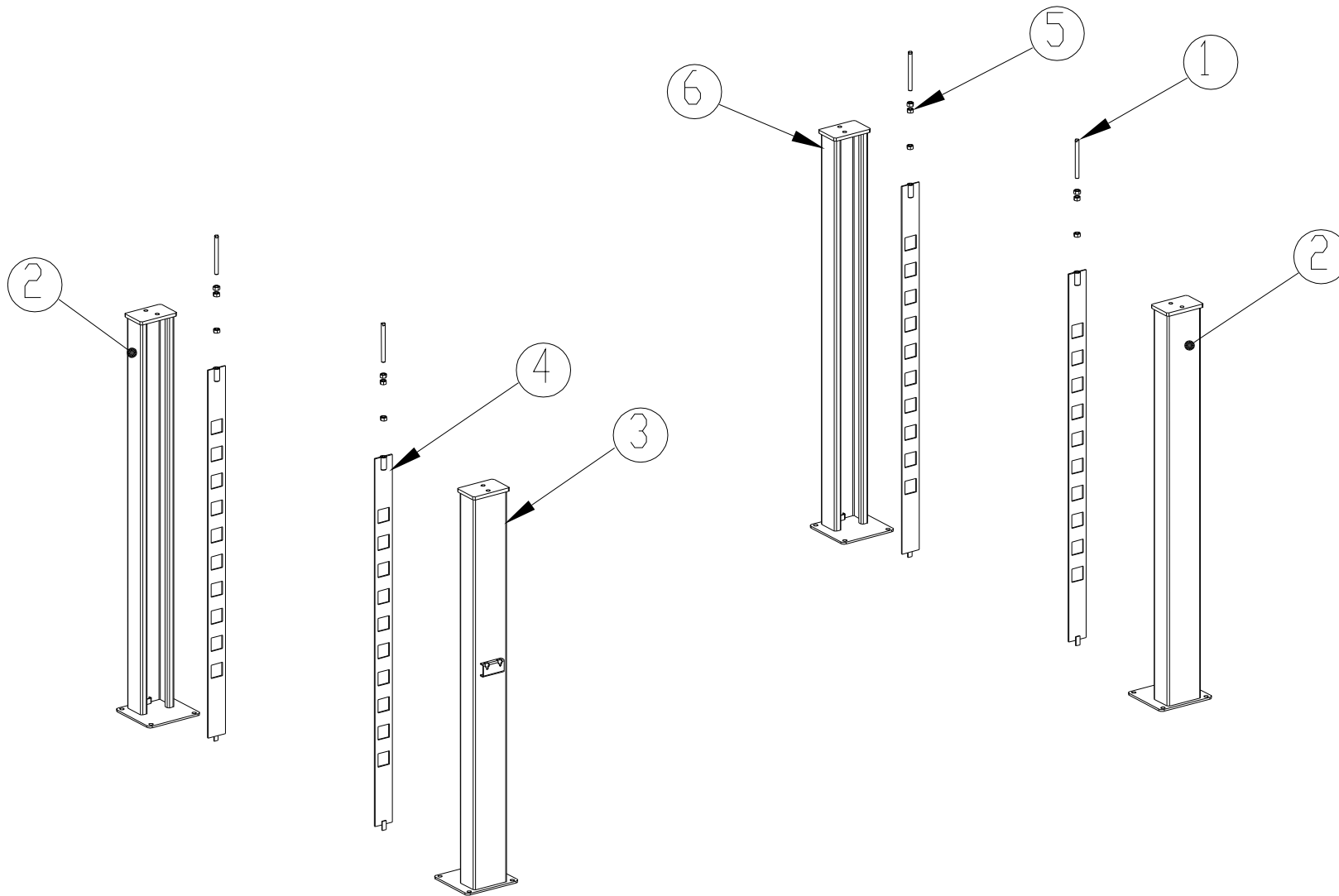


TAV.0	LIFT	ED. 11/17
-------	------	-----------

ITEM	PART NO.	DESCRIPTION	QTY	REMARK
1	Z71P100000	Column assembly unit	1	
2	Z71B200000	Transverse beam unit	1	
3	Z71A310000	Power-side platform assembly	1	
4	Z71A321000	Off-side platform assembly	1	
5	0205011	Washer D.10 - GB/T97.1	2	
6	0208007	Locking washer D.10 - GB/T93	2	
7	0201046	Screw M10X20 - GB/T5781	2	
8	0213018	Split pin 2.5X40 - GB/T91	4	
9	0203020	Nut M20 – GB52	8	
10	0201073	Screw M12X20 - GB/T5781	4	
11	0208009	Locking washer D.12 – GB/T93	4	
12	0205013	Washer D.12 – GB/T97.1	4	
13	0201098	Screw M16X40 - GB/T5781	16	
14	0205020	Washer D.16 – GB/T97.1	16	
15	0208011	Locking washer D.16 – GB/T93	16	
16	Z71P810000	Drive-on ramp assembly	2	
17	Z71P500002	Ramp shaft	2	
18	Z72A300001	Wheel stop	2	
19	Z71A820200	Steel cable B L=10085	1	
20	Z71A820100	Steel cable A L=3605	1	
21	Z71A820300	Steel cable C L=5105	1	
22	Z71A820400	Steel cable D L=8595	1	
23	6764D01100	Control panel	1	
24	BZ-Y1	Hydraulic power unit	1	
25	0505018	Safety limit switch 8108	1	
26	0202024	Screw M6X12 - GB/T70.1	4	
27	0206012	Screw M4X10 - GB/T818	1	
28	0206017	Screw M4X25 - GB/T818	1	

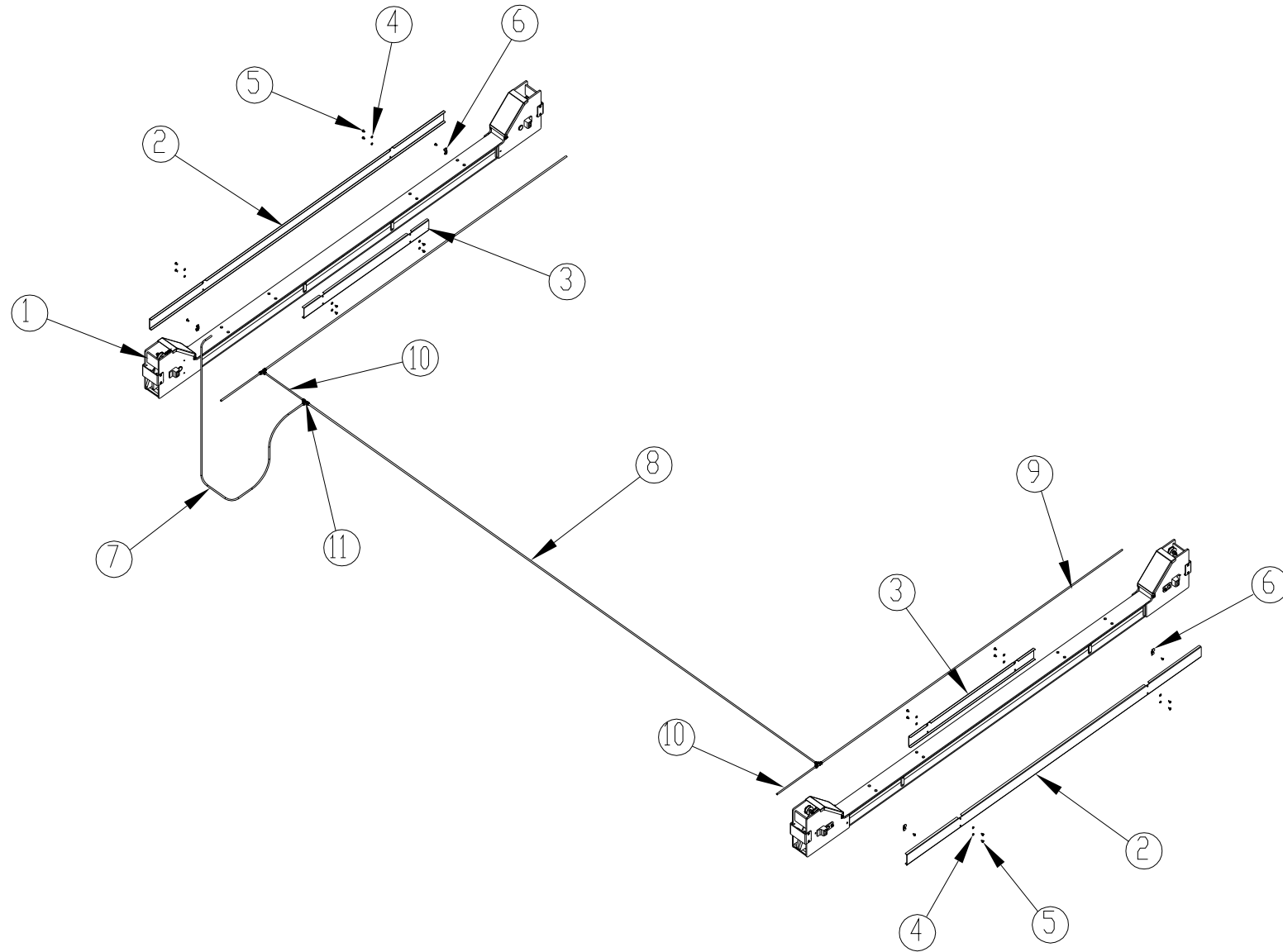
TAV.0	LIFT		ED. 11/17
-------	------	--	-----------

29	0205006	Washer D.6 - GB/T97.1	4
30	0208005	Locking washer D.6 – GB/T93	4
31	0206033	Screw M6X20 – GB/T818	4
32	Z72A800001	Switch support	1
33	Z72A801000	Switch actuator	1
34	0306190	Solenoid air valve DC24V	1
35	0306086	Silencer 1/4	1
36	0306144	Quick union 8-1/4	2

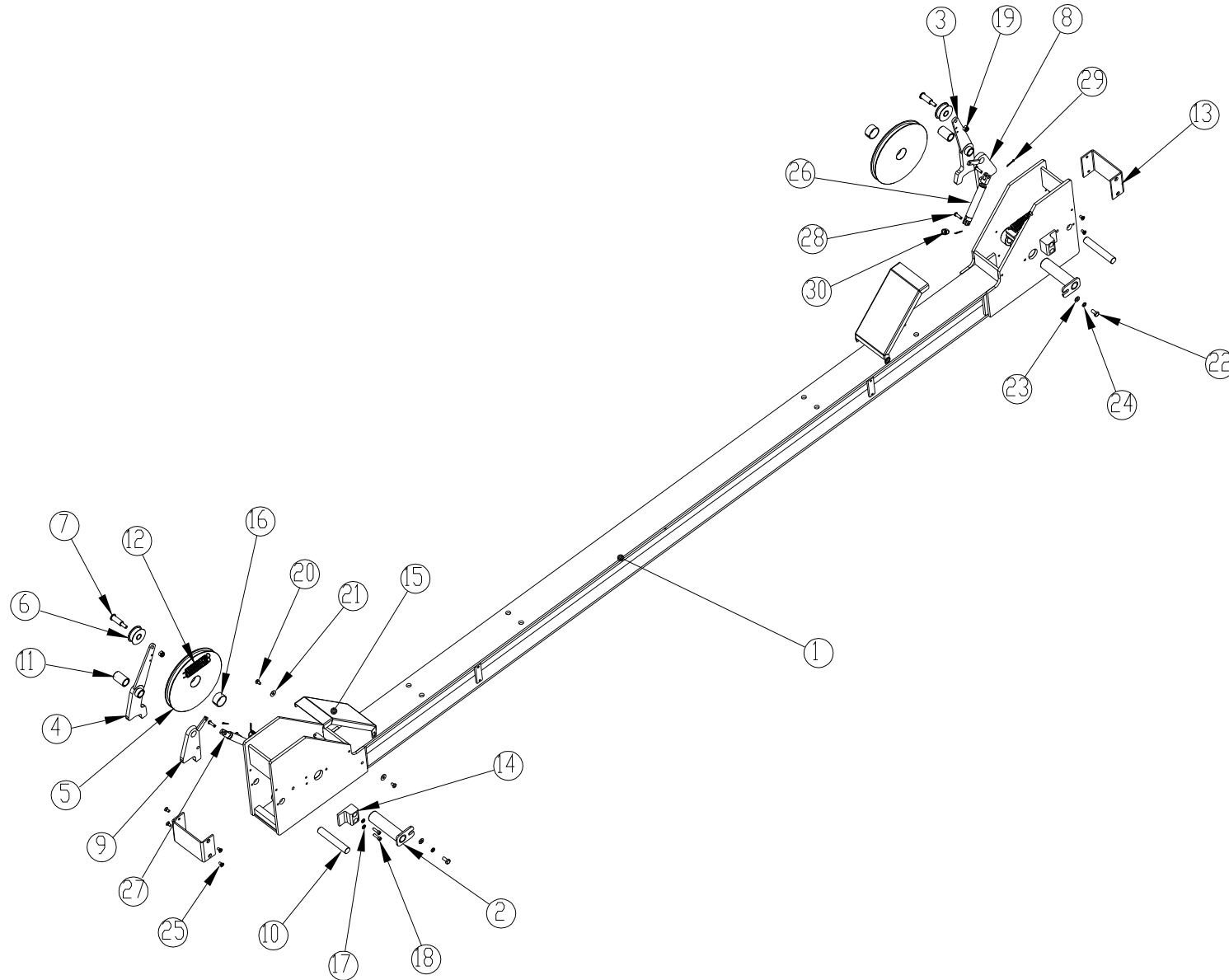


TAV.1.0	COLUMN ASSEMBLY UNIT	ED. 11/17
---------	----------------------	-----------

ITEM	PART NO.	DESCRIPTION	QTY	REMARK
1	Z72A111201	Rack shaft	4	
2	Z71P113000	Off-side column	2	
3	Z71P115000	Power-side column	1	
4	Z71P114000	Safety rack	4	
5	0203020	Nut M20 – GB52	12	
6	Z71P113000	Off-side column	1	



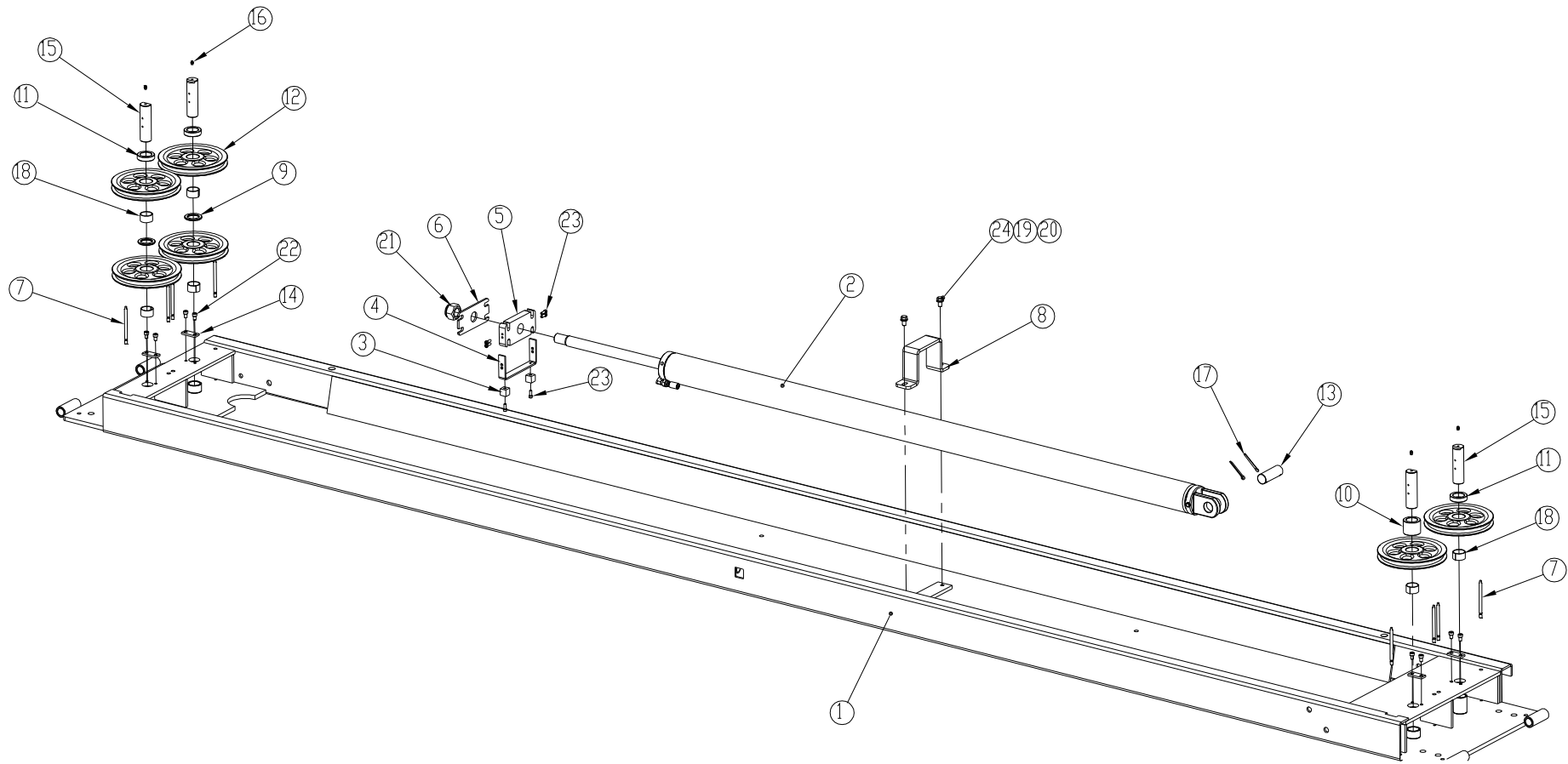
ITEM	PART NO.	DESCRIPTION	QTY	REMARK
1	Z71B211000	Transverse beam assembly	2	
2	Z71P222302	Front cover 2	1	
3	Z71P222303	Front cover	2	
4	0205006	Washer D.6 - GB/T97.1	16	
5	0206031	Screw M6X10 - GB/T818	20	
6	2L-72	U bolt	4	
7	0306097	Rilsan hose 8X5 L=2320 black	1	
8	0306097	Rilsan hose 8X5 L=4420 black	1	
9	0306097	Rilsan hose 8X5 L=4120 black	2	
10	0306097	Rilsan hose 8X5 L=370 black	3	
11	0306022	Tee quick union 8	3	



ITEM	PART NO.	DESCRIPTION	QTY	REMARK
1	Z71B211100	Transvers beam	1	
2	Z71P211200	Pulley shaft	2	
3	Z71P211300	Right cable anti-slack safety hook	1	
4	Z71P211400	Left cable anti-slack safety hook	1	
5	Z71P211801	Cable pulley	2	
6	Z72A212103	Nylon safety roller	2	
7	Z71P211805	Safety roller shaft	2	
8	Z71B211900B	Right back-up safety hook	1	
9	Z71B211900A	Left back-up safety hook	1	
10	Z71P211807	Hook shaft	2	
11	Z71P211808	Spacer	2	
12	Z71P211811	Safety spring	4	
13	Z71P211812	End cover	2	
14	Z71P211813	Nylon slider	4	
15	Z71P211814	Casing	2	
16	0210087	Bush SF-1/3218	2	
17	0205006	Washer D.6 - GB/T97.1	8	
18	0202033	Screw M6X20 – GB/T70.1	8	
19	0204004	Self-locking nut M8 – GB/T889.1	2	
20	0206031	Screw M6X10 - GB/T818	4	
21	0205007	Washer D.6 - GB/T96	4	
22	0201025	Screw M8X16 - GB/T5781	2	
23	0205008	Washer D.8 - GB/T97.1	2	
24	0208006	Locking washer D.8 - GB/T93	2	
25	0207052	Screw M6X12 - GB/T819.1	8	
26	0306256	Safety release air cylinder 16X40	2	
27	Z72A212114	Air cylinder joint	2	
28	Z72A212115	Air cylinder pin	2	

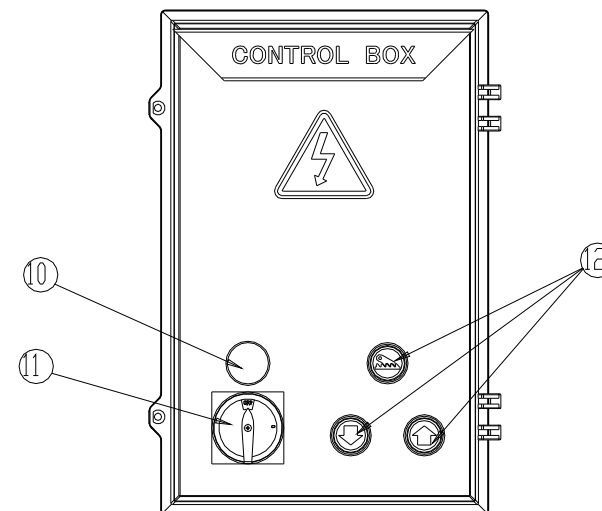
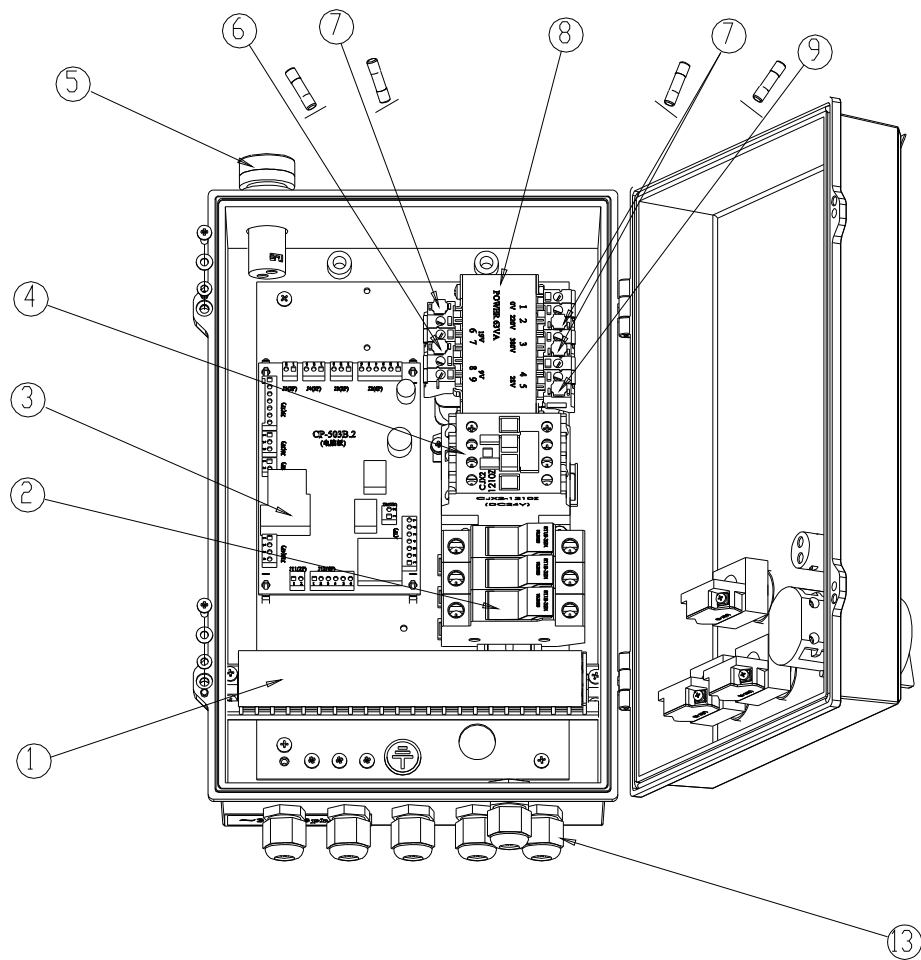
TAV.2.1	TRANSVERSE BEAM ASSEMBLY	ED. 11/17
---------	--------------------------	-----------

29	0213044	Split pin 2X20 - GB/T91	4
30	0306148	Quick union 8-M5	2

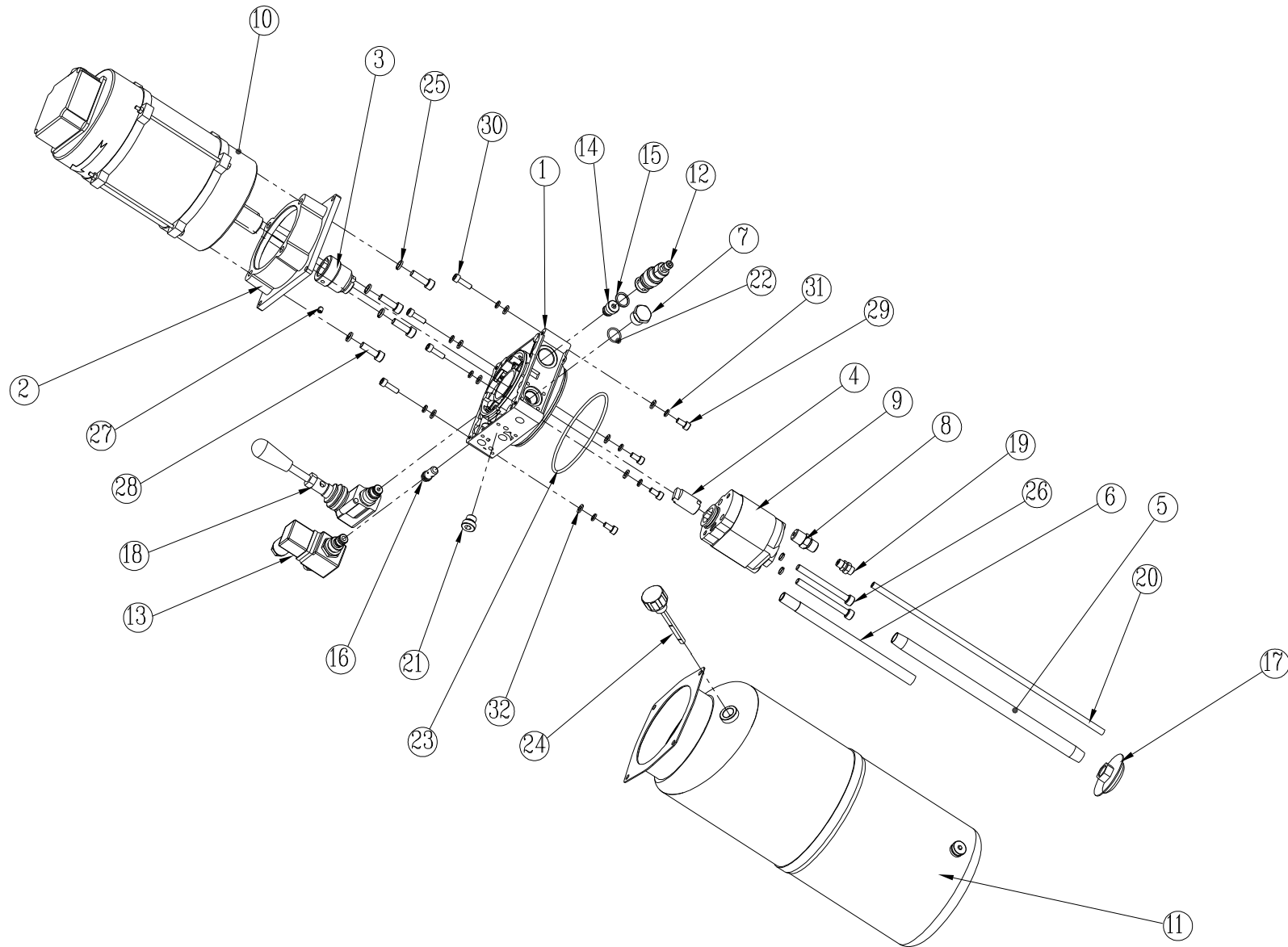


TAV.3.0	POWER-SIDE PLATFORM ASSEMBLY	ED. 11/17
----------------	-------------------------------------	------------------

ITEM	PART NO.	DESCRIPTION	QTY	REMARK
1	Z71A311000	Power-side platform	1	
2	Z71PY70000	Hydraulic cylinder unit	1	
3	Z71P310016	Nylon slider	2	
4	Z71P310015	Guide support	1	
5	Z71P310014	Cable guide B	1	
6	Z71P310013	Cable guide A	1	
7	Z71P310009	Anti-derailment pin	8	
8	Z71P310008	Cylinder U plate	1	
9	Z71P310007	Washer	2	
10	Z71P310006	Spacer	1	
11	Z71P310005	Spacer	3	
12	Z71P310004	Cable pulley	6	
13	Z71P310003	Cylinder pin	1	
14	Z71P310002	Spacer	4	
15	Z71P310001	Pulley shaft	4	
16	0215041	Greaser 6X1	4	
17	0213113	Split pin 5X50 - GB/T91	2	
18	0210088	Bush SF-1/3220	6	
19	0208007	Locking washer D.10 – GB/T93	2	
20	0205011	Washer D.10 - GB/T97.1	2	
21	0204011	Self-locking nut M27 – GB/T889.1	1	
22	0202043	Screw M8X12 - GB/T70.1	8	
23	0202032	Screw M6X16 - GB/T70.1	6	
24	0201046	Screw M10X20 - GB/T5781	2	



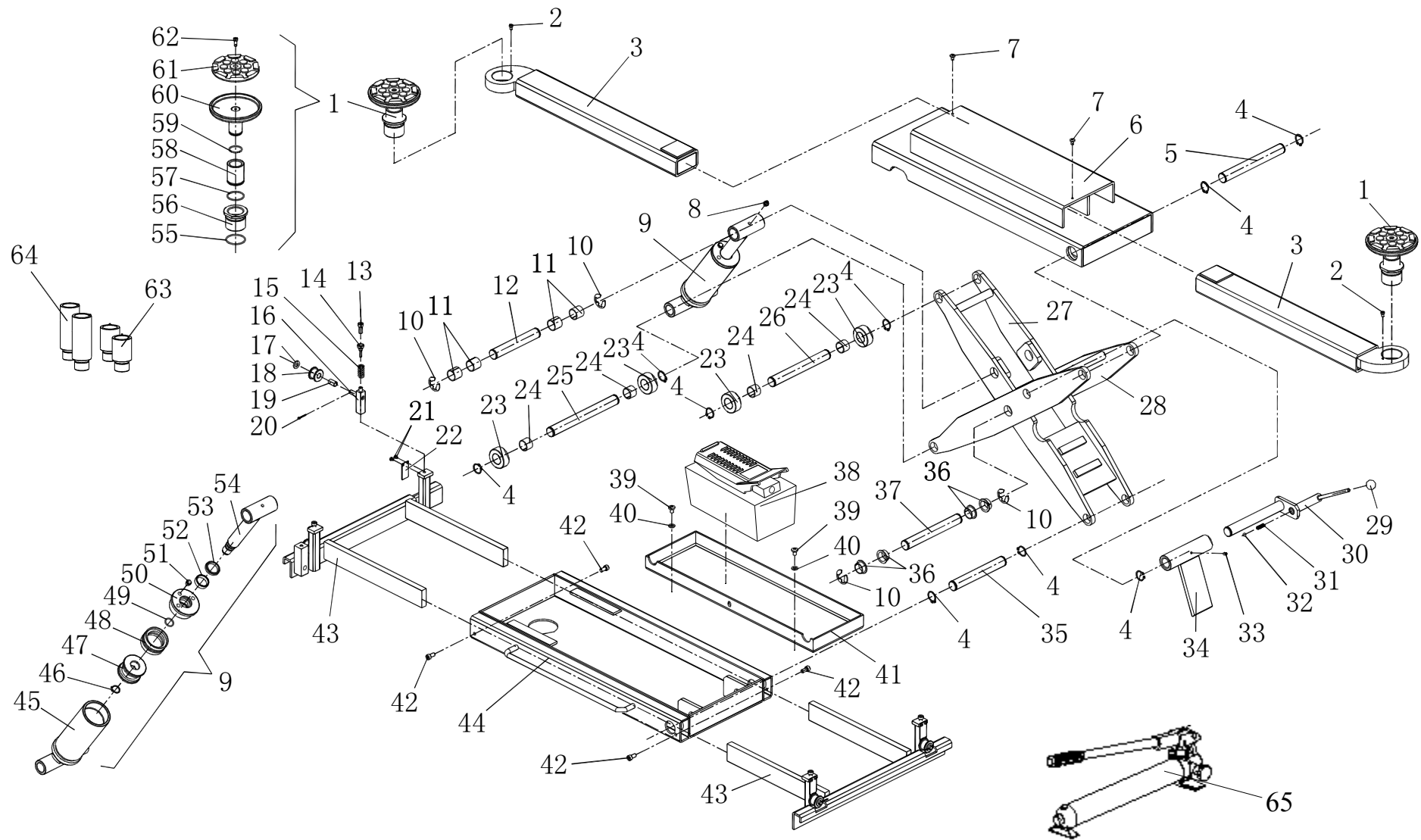
ITEM	PART NO.	DESCRIPTION	QTY	REMARK
1	0507069	Wiring terminal JF5-1.5/1X22	1	
2a	0504009	Overload cutoff 16A 10X38	3	For 380V/400V
2b	0504013	Overload cutoff 32A 10X38	2	For 220V/230V
3	0507040	Control board CP-503B.2	1	
4	0501044	Contacteur 1210/DC24V	1	
5	0502021	Beeper DC24V	1	
6	0504003	Fuse 2A/5X20	1	
7	0504016	Fuse 1A/5X20	3	
8a	0503013	Transformer 63VA 220V/380V-28V	1	
8b	0503012	Transformer 63VA 230V/400V-28V		
9	0504004	Fuse 4A/5X20	1	
10	0502023	Pilot lamp DC24V	1	
11	0505022	Power switch 20A	1	
12	0502003	Pushbutton 37-10	1	
13	0508011	Cable holder M18	6	



TAV.24.0	HYDRAULIC POWER UNIT	ED. 11/17
----------	----------------------	-----------

ITEM	PART NO.	DESCRIPTION	QTY	REMARK
1	BZ-ZB-Y1	Manifold	1	
2	BZ-DJ-1B	Motor flange	1	
3	BZ-ZT24	Motor joint	1	
4	BZ-BJ36	Pump joint	1	
5	BZ-G18X310	Oil suction pipe	1	
6	BZ-G1/4X210	Oil returning pipe	1	
7	BZ-SD-01	Plug	1	
8	0303064	Union 3/8	1	
9a	0301015	Gear pump 4.8cc	1	For 2.6KW/3PH 4P motor
9b	0301008	Gear pump 2.1cc	1	For 2.2KW/1PH 2P motor
10a	0509070	Motor 220V/380V/50HZ/3PH 2.6KW 4P	1	
10b	0509075	Motor 230V/400V/50HZ/3PH 2.6KW	1	
10c	0509039	Motor 220V/380V/60HZ/3PH 2.6KW	1	
10d	0509071	Motor 220V/50HZ/1PH 2.2KW	1	
10e	0509068	Motor 230V/50HZ/1PH 2.2KW	1	
10f	0509092	Motor 220V/60HZ/1PH 2.2KW	1	
11	0305033	Oil tank Y123-10	1	
12	0307010	Pressure overload valve	1	
13	0307048	Lowering solenoid valve DC24V	1	
14	0307067	Non-return valve	1	
15	0313057	Copper washer 16X20	1	
16	0307006	Lowering speed control valve D.2.5	1	
17	0305010	Oil filter 3/8	1	
18	0307012	Emergency hand pump	1	Optional
19	0306069	Union 8-1/8 (FN-8-01)	1	
20	0306097	Rilsan hose 8X5 L=370mm	1	
21	0305016	Plug 1/4	1	
22	0309054	O-ring 17.0X1.8	1	

23	0309060	O-ring 115X3.55	1
24	0305026	Oil level plug 3/8	1
25	0208006	Locking washer D.8 - GB/T93	6
26	0202045	Screw M8X80 - GB/T70.1	2
27	0209030	Screw M6X8 - GB/T78	1
28	0202045	Screw M8X20 - GB/T70.1	4
29	0202024	Screw M6X12 - GT/T70.1	4
30	0202033	Screw M6X20 - GB/T70.1	4
31	0208005	Locking washer D.6 - GB/T93	8
32	0205006	Washer D.6 - GB/97.1	8



TAV.20.0	JACKING BEAM	ED. 11/17
----------	--------------	-----------

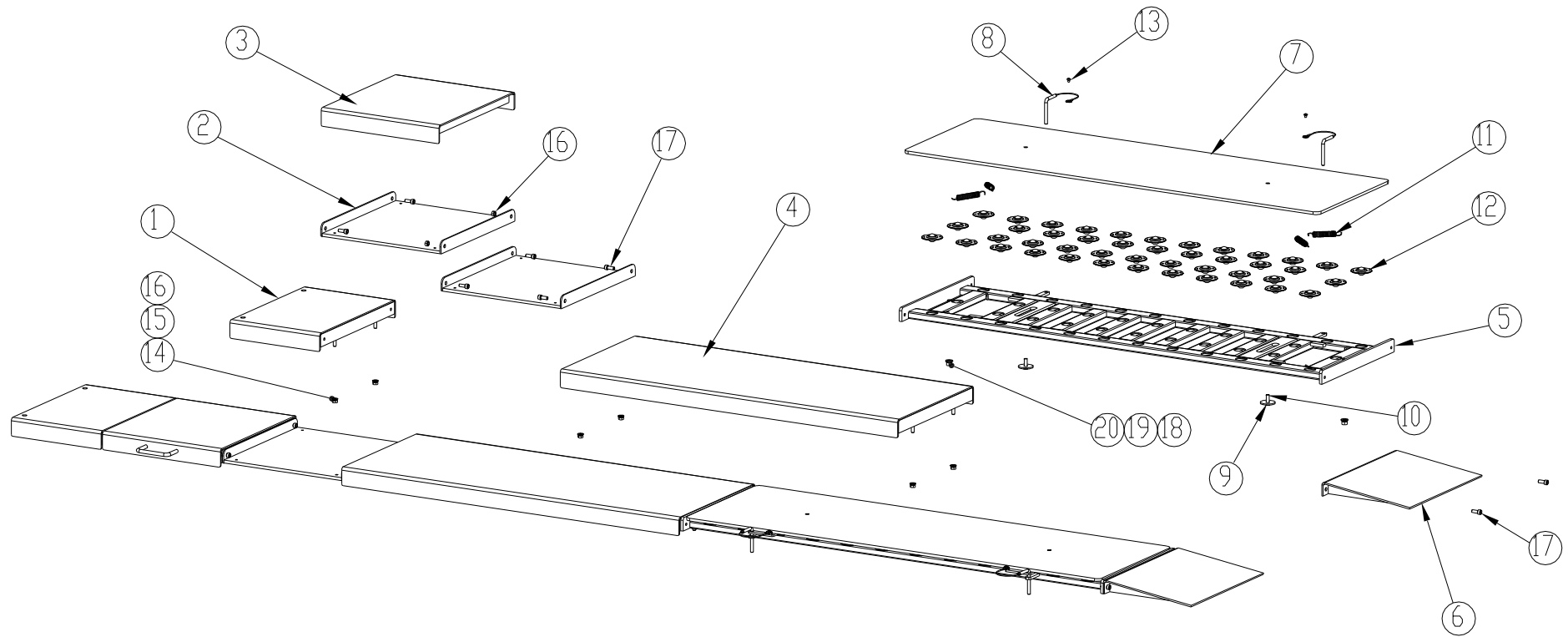
ITEM	PART NO.	DESCRIPTION	QTY	REMARK
1	Z23A313000	Lifting adaptor assembly	2	
2	0202020	Screw M5X8 - GB/T70.1	2	
3	J07K220000	Lifting arm	2	
4	0212004	Seeger D.25	9	
5	HJ-RG-10-4	Shaft	1	
6	J07K210000	Beam	1	
7	0206031	Screw M6X10 - GB/T818	2	
8	0215021	Greaser 8X1	1	
9	HJ-63-0	Jack hydraulic cylinder unit	1	
10	0211003	Seeger D.19	4	
11	0210009	Bush SF-1/2525	4	
12	HJ-RG-19	Cylinder upper shaft	1	
13	0202045	Screw 8X20 - GB/T70.1	4	
14	J07K180001	Pin	4	
15	HJ-RG-18	Spring	4	
16	J07K130000	Slider	4	
17	0205011	Washer D.10 - GB/T97.1	4	
18	HJ-RG-14	Roller	4	
19	0210001	Bush SF-1/1020	4	
20	0213044	Split pin 2X20	4	
21	0206019	Screw M4X6 - GB/T818	8	
22	J07K180002	Anti-derailment plate	4	
23	HJ-RG-11-1	Wheel	4	
24	0210008	Bush SF-1/2520	4	
25	HJ-RG-10-5	Cylinder lower shaft	1	
26	HJ-RG-10-3	Shaft	1	
27	J07K400000	Inner scissor arm	1	

TAV.20.0	JACKING BEAM	ED. 11/17
----------	--------------	-----------

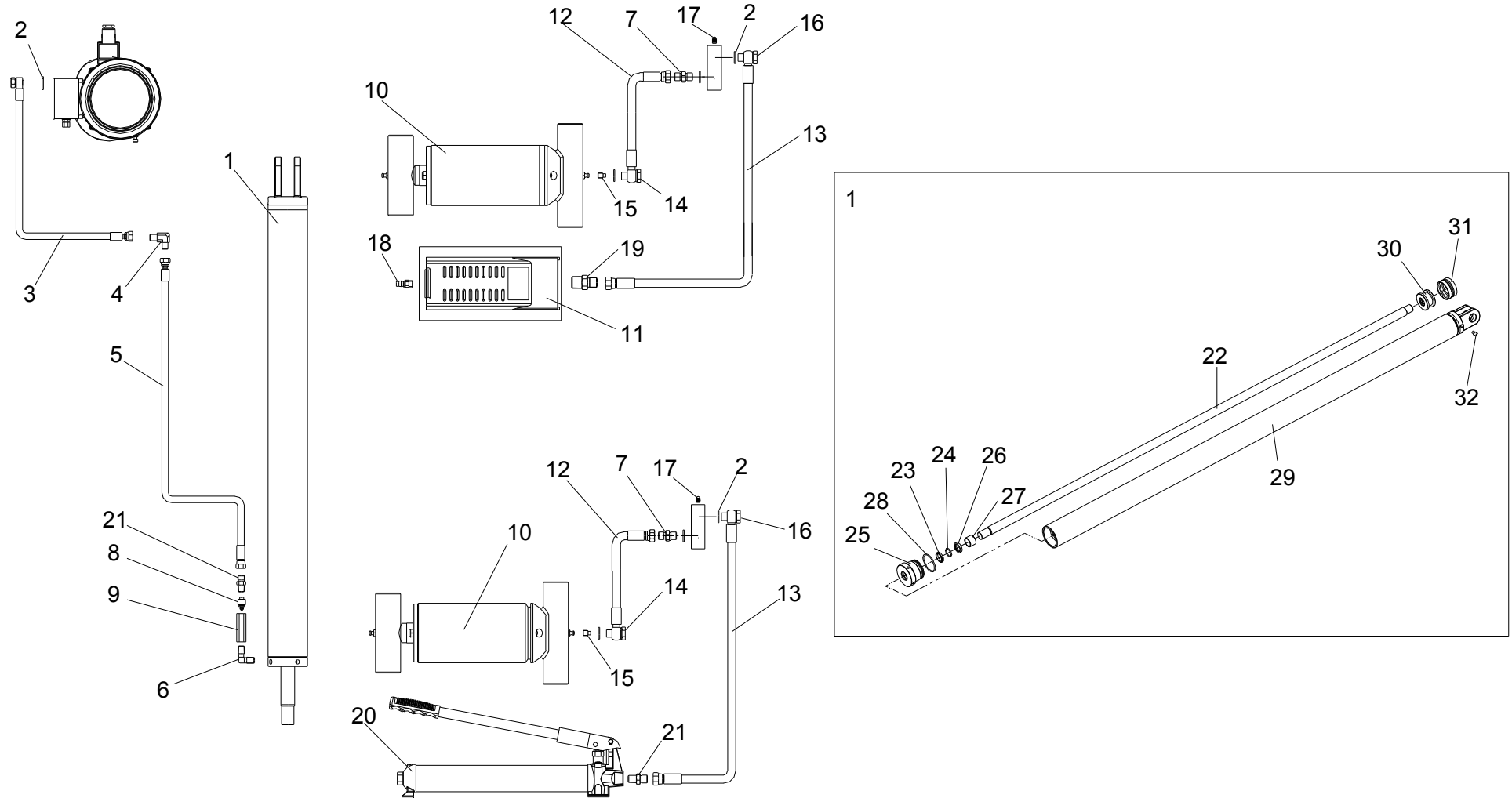
28	J07K300000	Outer scissor arm	1
29	0215016	Handle knob M8X25	1
30	HJ-RG-08-0	Safety release handle	1
31	HJ-SB-19-3	Spring	1
32	0215038	Steel ball D.8	1
33	0209010	Screw M6X10 - GB/T78	1
34	HJ-RG-09-0	Safety hook	1
35	HJ-RG-10-1	Shaft	1
36	0210066	Bush SF-1/2512F	4
37	HJ-RG-10-2	Central shaft	1
38	0301052	Air-hydraulic pedal pump 800CC	1
39	0206001	Screw M8X12 - GB/T818	2
40	0205008	Washer D.8 - GB/T97.1	2
41	6740A-61101A	Pump tray	1
42	0202040	Screw M8X16 - GB/T70.1	4
43	J07K120000	Base extension	2
44	J07Q110000	Jack base	1
45	HJ-63-1	Jack cylinder liner	1
46	0212005	Seeger D.20	1
47	8240TX-63-2	Jack cylinder piston	1
48	0312012	Gasket 63X47X18.4	1
49	0309022	O-ring 24X2.4	1
50	8240TX-63-3	Cylinder guiding cover	1
51	0306087	Silencer 1/8	1
52	0305007	Guiding ring 30x10x2.5	1
53	0311005	Scraper 30X38X5/6.5	1
54	HJ-75-4	Cylinder shaft	1

TAV.20.0	JACKING BEAM	ED. 11/17
----------	--------------	-----------

55	0309091	O-ring 45X2.65	2	
56	Z23A313002	Outer threaded bush	2	
57	0212034	Seeger D.42	2	
58	Z23A313001	Inner threaded bush	2	
59	0212035	Seeger D.32	2	
60	Z23A313100	Pad support	2	
61	Z23A313202	Rubber pad	2	
62	0202032	Screw M6X16 - GB/T70.1	2	
63	Z23A601200	Adaptor extension H.80	2	For special request
64	Z23A601300	Adaptor extension H.155	2	For special request
65	0301032	Hand pump 11804-1	1	Optional



ITEM	PART NO.	DESCRIPTION	QTY	REMARK
1	Z72A334000	Spacer	2	
2	Z72A336000	Recess base plate	4	
3	Z72A335000	Recess cover	2	
4	Z72A332000	Platform cover	2	
5	Z72A338000	Gasket	2	
6	Z71P332000	Approach ramp	2	
7	Z72A337000	Slipping plate	2	
8	Z72A339000	Plate stop pin	4	
9	Z72A300003	Washer	4	
10	0201049	Screw M10X30 - GB/T5783	4	
11	Z72A300004	Spring	8	
12	0215087	Steel ball unit	88	
13	0206036	Screw M6X8 - GB/T818	4	
14	0205011	Washer D.10 - GB/T97.1	12	
15	0208007	Locking washer D.10 – GB/T93	12	
16	0203009	Nut M10 - GB52	16	
17	0202061	Screw M10X25 - GB/T70.1	4	
18	0205013	Washer D.12 - GB/T97.1	4	
19	0208009	Locking washer D.12 - GB/T93	4	
20	0203013	Nut M12 - B52	4	



HYDRAULIC LINE

ED. 11/17

ITEM	PART NO.	DESCRIPTION	QTY	REMARK
1	Z71PY70000	Hydraulic cylinder	1	
2	0313001	Washer 1/4	8	
3	6764-ZJ1900	Hydraulic hose 1/4 L=1900	1	
4	0303075	90 degree union	1	
5	6745-ZZ1830	Hydraulic hose 1/4 L=1830	1	
6	0303020	45 degree union	1	
7	0303065	Union (1B-04)	2	
8	0307021	Parachute valve 1/4	1	Optional
9	67SJ-101	Valve union	1	Optional
10	HJ-63-0	Jack hydraulic cylinder	1	
11	0301052	Air-hydraulic pedal pump 800CC	1	
12	ZJ380	PU hydraulic hose L=380	2	
13	ZJ700	Hydraulic hose L=700	2	
14	BZ-720B-0401	Bolt	2	
15	BZ-GZ-002	Screw	2	
16	0303027	Bolt (720B-04)	2	
17	0305001	Plug (ZBJ22 007-QD07)	2	
18	0306112	Quick union (Φ8 G1-4)	1	
19	0303064	Union 3/8 (1BT-04-06SP)	1	
20	0301032	Hand pump 11804-1	1	Optional
21	0303063	Union 1/4	2	
22	Z71PY70002	Cylinder shaft	1	
23	0311005	Scraper 30X38X5/6.5	1	
24	0309027	O-ring 35X3.1	1	
25	Z71PY70001	Cylinder guiding cover	1	
26	0310009	Seal 30X38X7	1	
27	0305006	Guiding ring 32X25X2.5	1	
28	0309064	O-ring 63X3.55	1	

	HYDRAULIC LINE	ED. 11/17
--	----------------	-----------

29	Z71PY70100	Cylinder liner	1
30	Z71PY70003	Piston	1
31	0312014	Gasket 70X50X22.4	1
32	0306087	Silencer 1/8	1